

Encoder mounting attachments			Fixing components for hollow shaft encoders				Overview								
Fig.	Description	Pitch circle diameter in mm [inch]	Order No.	Details s. page	Incremental Encoders			Absolute Singleturn Encoders			Absolute Multiturn Encoders				
					3620, 3720	5020	5823, 5824, 5825	3670, 3671, M3678	F3673, F3678	5873, 5878	5870, 5872	F3683, F3688	5883, 5888,	F5883, F5885	5882, 5860
	<b>Spring element, short</b> For applications with limited axial play and low dynamics, and reduced mounting space	36XX 42 [1.65] M36XX 42 [1.65] F36XX 42 [1.65] 37XX 40 [1.57] 50XX 42 [1.65] 58XX 42 [1.65] F58XX 42 [1.65]	<b>8.0010.4H00.0000</b>	422	X	X	X	X	X	X	X	X	X	X	X
	<b>Spring element, long</b> For applications with axial play and low dynamics	36XX 60 [2.36] M36XX 60 [2.36] F36XX 60 [2.36] 37XX 63 [2.48] 50XX 44 [1.73] 58XX 65 [2.56] F58XX 65 [2.56]	<b>8.0010.4I00.0000</b>	422	X	X	X	X	X	X	X	X	X	X	X
	<b>Fastening arm, short (flexible)</b> For applications with axial and radial play, low dynamics	64.5 [2.54]	<b>8.0010.40M0.0000</b>	422		X	X		X	X		X	X	X	
	<b>Fastening arm, medium (flexible)</b> For applications with axial and radial play for constant rotary movements	65 ... 91.5 [2.56 ... 3.60]	<b>8.0010.40E0.0000</b>	422		X	X		X	X		X	X	X	
	<b>Fastening arm, long (flexible)</b> For applications with axial and radial play and low dynamics	80 ... 170 [3.15 ... 6.69]	<b>8.0010.4R00.0000</b>	423		X	X		X	X		X	X	X	
	<b>Stator coupling, double-winged</b> For applications with axial and radial play and high dynamics	46 [1.81]	<b>8.0010.4C00.0000</b>	423	X			X	X			X			
	<b>Stator coupling, double-winged</b> For applications with high demands for accuracy	63 [2.48]	<b>8.0010.4D00.0000</b>	423		flange C+D	X		X	X		X	X	X	
	<b>Stator coupling, for fixing to side of encoder</b> For standard applications with axial and radial play, and high dynamics	65 [2.56]	<b>8.0010.1602.0000</b>	424		flange C+D	X		X	X		X	X	X	
	<b>Stator coupling, for fixing to front of encoder</b> For applications with axial and radial play and high dynamics	65 [2.56]	<b>8.0010.40L0.0000</b>	424		X	X		X	X		X	X	X	
	<b>Spring tether element</b> For applications with low axial and radial play and low dynamics	42 ... 84.5 [1.65 ... 3.33]	<b>8.0010.40W0.0000</b>	424		X	X		X	X		X	X	X	

# Accessories

Encoder mounting attachments		Fixing components for hollow shaft encoders			Overview			
Fig.	Description	Pitch circle diameter in mm [inch]	Order No.	Details s. page	A020	A02H	9080, 9081	H120
	<b>Spring element, short</b> For applications with reduced mounting space	76 [2.99]	<b>8.0010.4J00.0000</b>  <i>Connection to the application:</i> cylindrical pin	425	X	X	X	
	<b>Spring element, long</b> For applications with high axial play	110 [4.33]	<b>8.0010.4K00.0000</b>  <i>Connection to the application:</i> cylindrical pin	425	X	X	X	
	<b>Tether square</b> For applications with axial and radial play with low dynamics for constant rotary movements	9080: 120 [4.72] 9081: 120 [4.72]	<b>8.0010.4G00.0000</b>  <i>Connection to the application:</i> 1 screw	425			X	
	<b>Fastening arm, short</b> For applications with axial play	149 [5.87]	<b>8.0010.4T00.0000</b>  <i>Connection to the application:</i> s. details	425	X	X	X	
	<b>Fastening arm, long</b> For applications with fastening points located on variable pitch circle diameters	104 ... 206 [4.09 ... 8.11]	<b>8.0010.4E00.0000</b>  <i>Connection to the application:</i> 1 screw	426	X	X	X	
	<b>Tether arm, long</b> For applications with low axial and radial play, flexible in use	Length = 70 [2.75] Length = 100 [3.94] Length = 150 [5.91]  262 ... 422 [10.32 ... 16.61]	<b>8.0010.40S0.0000</b> <b>8.0010.40T0.0000</b> <b>8.0010.40U0.0000</b>  <i>Connection to the application:</i> 1 screw	426	X	X	X	X
	<b>Stator coupling</b> For applications with axial and radial play and high dynamics	119 [4.69]	<b>8.0010.40V0.0000</b>  <i>Connection to the application:</i> 2 screws	426	X	X		X

# Accessories

Encoder mounting attachments	Fixing components for hollow shaft encoders	Details
------------------------------	---	---------

### Dimensions / Details

Dimensions in mm [inch]

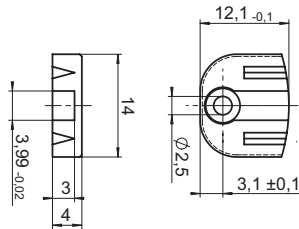
#### Spring element, short

Scope of delivery:

- spring element (plastic)
- 1 screw for fixing to the encoder

Connection to application:

- cylindrical pin (8.0010.4700.0000) (not supplied)



Order No.

**8.0010.4H00.0000**

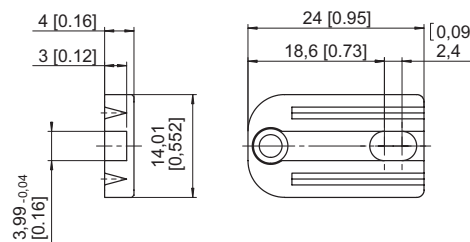
#### Spring element, long

Scope of delivery:

- spring element (plastic)
- 1 screw for fixing to the encoder

Connection to application:

- cylindrical pin (8.0010.4700.0000) (not supplied)

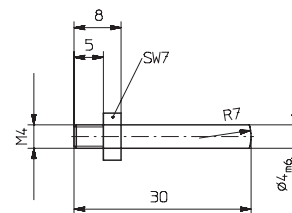


Order No.

**8.0010.4I00.0000**

#### Cylindrical pin, long with fastening thread

suitable for spring element short (8.0010.4H00.0000) and long (8.0010.4I00.0000)



Order No.

**8.0010.4700.0000**

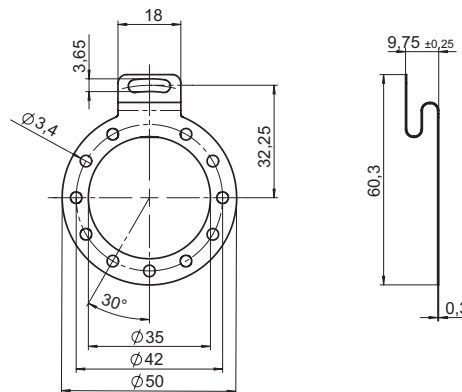
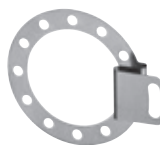
#### Fastening arm, short

Scope of delivery:

- Fastening arm (stainless steel)
- 3 screws for fixing to the encoder

Connection to application:

- 1 screw (not supplied)



Order No.

**8.0010.40M0.0000**

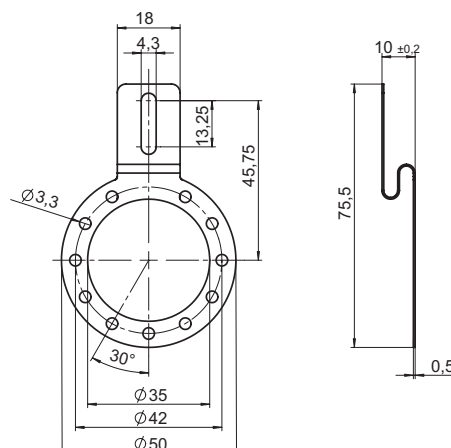
#### Fastening arm, medium

Scope of delivery:

- Fastening arm (stainless steel)
- 3 screws for fixing to the encoder

Connection to application:

- 1 screw (not supplied)



Order No.

**8.0010.40E0.0000**

# Accessories

## Encoder mounting attachments    Fixing components for hollow shaft encoders    Details

### Dimensions / Details

Dimensions in mm [inch]

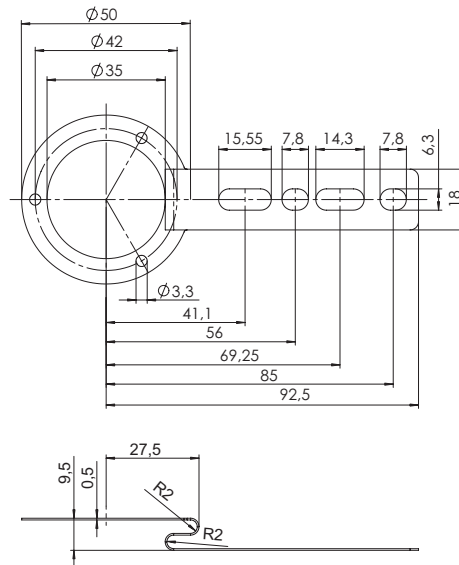
#### Fastening arm, long

Scope of delivery:

- Fastening arm (stainless steel)
- 3 screws for fixing to the encoder

Connection to application:

- 1 screw (not supplied)



Order No.

**8.0010.4R00.0000**

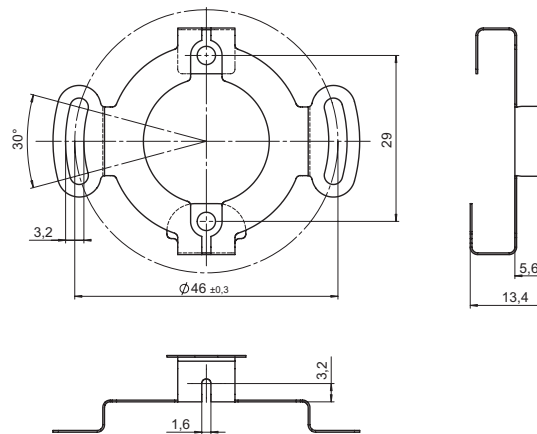
#### Stator coupling, double-winged for front fixing onto the encoder flange

Scope of delivery:

- Stator coupling (stainless steel)
- 2 screws for fixing to the encoder

Connection to application:

- 2 screws (not supplied)



Order No.

**8.0010.4C00.0000**

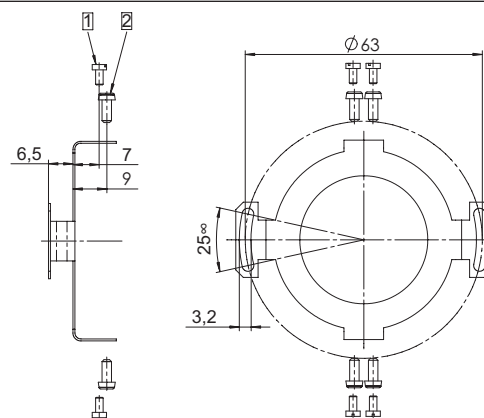
#### Stator coupling, double-winged for side fixing onto the encoder flange

Scope of delivery:

- Stator coupling (stainless steel)
- 1 4 screws M2 x 4 [0.16] for fixing to the encoder 5882
- 2 4 screws M2.5 x 6 [0.24] for fixing to the encoders 582X, 587X, 502X

Connection to application:

- 2 socket head screws M3 x 8 [0.32] with washer (supplied)



Order No.

**8.0010.4D00.0000**

# Accessories

<b>Encoder mounting attachments</b>	<b>Fixing components for hollow shaft encoders</b>	<b>Details</b>
-------------------------------------	--	----------------

### Dimensions / Details

Dimensions in mm [inch]

#### Stator coupling, for side fixing onto the encoder flange

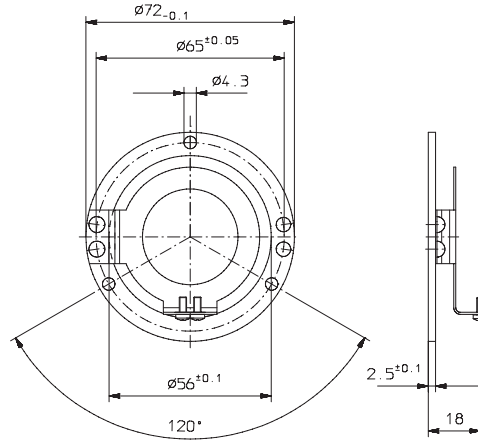
Scope of delivery:

- Stator coupling (stainless steel)
- 1 2 screws M2 x 4 [0.16] for fixing to the encoder 5882

- 2 2 screws M2.5 x 6 [0.24] for fixing to the encoders 582X, 587X, 502X

Connection to application:

- 3 screws (not supplied)



Order No.

**8.0010.1602.0000**

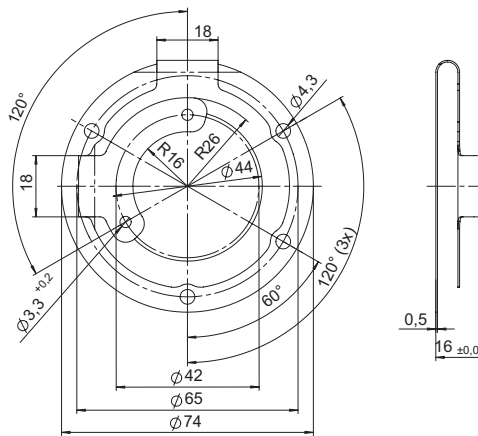
#### Stator coupling, for front fixing onto the encoder flange

Scope of delivery:

- Stator coupling (stainless steel)
- 2 screws for fixing to the encoder

Connection to application:

- 3 screws (not supplied)



Order No.

**8.0010.40L0.0000**

#### Spring tether element

Scope of delivery:

- Spring tether element
- 1 screw for fixing to the encoder

Connection to application:

- 1 screw (not supplied)

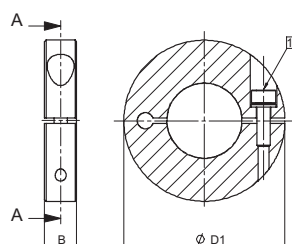


Order No.

**8.0010.40W0.0000**

#### Clamping ring

Stainless steel, for high rotational speeds



	for encoder	B	D1	for hollow shaft $\varnothing$
	582X	6 [0.236]	29 [1.14]	10 [0.39]
		6.2 [0.244]	30 [1.18]	12 [0.47]
	5020	6.2 [0.244]	30 [1.18]	12 [0.47]

Order No.

**8.0000.4V00.0000**

**8.0000.4W00.0000**

**8.0010.4W01.0000**

- 1 screw DIN 912 A2 M2.5, max. tightening torque 0.45 Nm

# Accessories

## Encoder mounting attachments      Fixing components for hollow shaft encoders      Details

### Dimensions / Details

Dimensions in mm [inch]

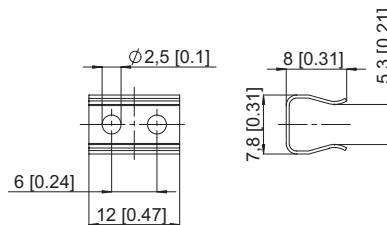
#### Spring element, short

Scope of delivery:

- spring element (stainless steel)
- 2 screws for fixing to the encoder

Connection to application:

- cylindrical pin (8.0010.4700.0003) (not supplied)



Order No.

**8.0010.4J00.0000**

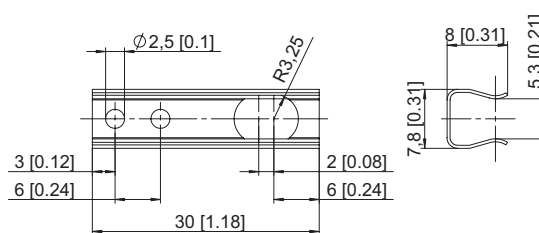
#### Spring element, long

Scope of delivery:

- spring element (stainless steel)
- 2 screws for fixing to the encoder

Connection to application:

- cylindrical pin (8.0010.4700.0003) (not supplied)

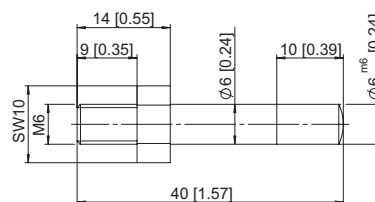


Order No.

**8.0010.4K00.0000**

#### Cylindrical pin, long with fastening thread

suitable for spring element short (8.0010.4J00.0000) and long (8.0010.4K00.0000)



Order No.

**8.0010.4700.0003**

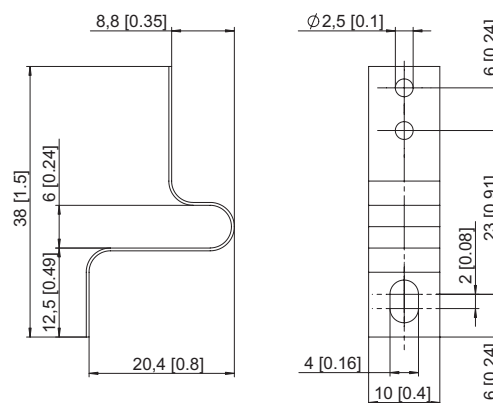
#### Tether square

Scope of delivery:

- tether square (stainless steel)
- 2 screws for fixing to the encoder

Connection to application:

- 1 screw (not supplied)



Order No.

**8.0010.4G00.0000**

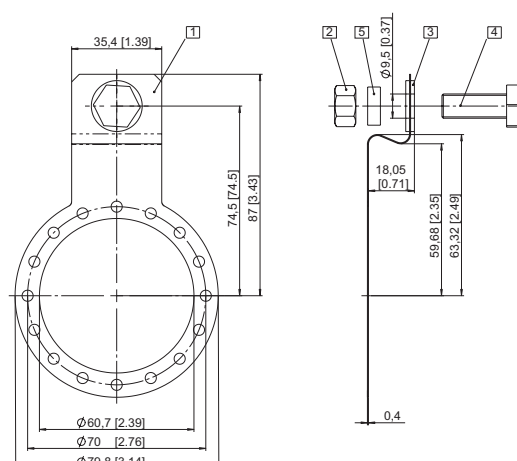
#### Fastening arm, short

Scope of delivery:

- ① Fastening arm (stainless steel)
- 3 screws for fixing to the encoder

Connection to application:

- ② Hexagonal nut 3/8 - 16 UNC
- ③ Washer (isolating)
- ④ Hexagonal screw 3/8 16 UNC x 1"
- ⑤ Washer D10.4 x 15 x 15 (supplied)



Order No.

**8.0010.4T00.0000**

# Accessories

## Encoder mounting attachments      Fixing components for hollow shaft encoders      Details

### Dimensions / Details

Dimensions in mm [inch]

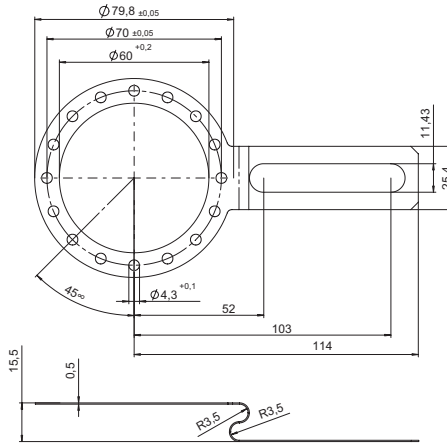
#### Fastening arm, short

Scope of delivery:

- Fastening arm (stainless-steel)
- 3 screws for fixing to the encoder

Connection to application:

- 1 screw (not supplied)



Order No.

**8.0010.4E00.0000**

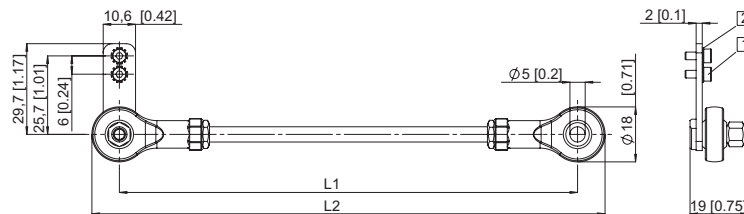
#### Tether arm, long

Scope of delivery:

- Tether arm
- 1 2 Socket cap screws M2.5 x 6 [0.24]
- 2 2 Lock washers for fixing to the encoder

Connection to application:

- 1 screw (not supplied)



Tether arm	L1	L2
70 mm [2.76]	64 ... 74 [2.51 ... 2.91]	82 ... 92 [3.23 ... 3.62]
100 mm [3.93]	94 ... 104 [3.70 ... 4.09]	112 ... 122 [4.41 ... 4.80]
150 mm [5.91]	144 ... 154 [5.67 ... 6.06]	162 ... 172 [6.38 ... 6.77]

Order No.

**8.0010.40S0.0000**

**8.0010.40T0.0000**

**8.0010.40U0.0000**

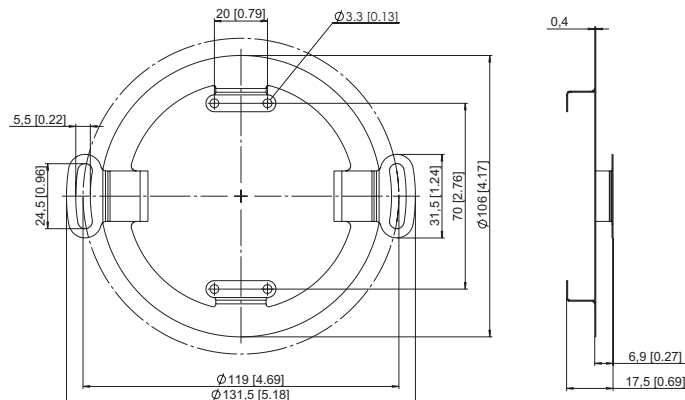
#### Stator coupling

Scope of delivery:

- Stator coupling (stainless steel)
- 4 screws for fixing to the encoder

Connection to application:

- 2 screws (not supplied)



Order No.

**8.0010.40V0.0000**