

## Z terminal with tension spring connection ZDU 2.5-2 BL

**Weidmüller Interface GmbH & Co. KG**  
 Klingenbergstraße 16  
 D-32758 Detmold  
 Germany  
 Fon: +49 5231 14-0  
 Fax: +49 5231 14-292083  
 www.weidmueller.com



Terminal blocks in tension clamp system and the Z Series are specially customised to the customers' requirements. Less space, spacious labelling area, integrated test point, cross-connection functionality within the Z Series and another family of terminals by Weidmüller. Z-Series terminals have a large clamping range and one or two cross-connection slots. Plug-in standard cross-connections enable potentials to be distributed over any number of terminals.

### General ordering data

|            |  |
|------------|--|
| Type       | ZDU 2.5-2 BL   |
| Order No.  | <a href="#">1772070000</a>   |
| Version    | Z terminal with tension spring connection, Feed-through terminal, Rated cross-section: Tension clamp connection, Wemid, Blue |
| GTIN (EAN) | 4032248128716  |
| Qty.       | 100 pc(s).   |

**Z terminal with tension spring connection  
ZDU 2.5-2 BL**

**Weidmüller Interface GmbH & Co. KG**  
Klingenbergstraße 16  
D-32758 Detmold  
Germany  
Fon: +49 5231 14-0  
Fax: +49 5231 14-292083  
www.weidmueller.com

**Technical data**
**Dimensions and weights**

|            |         |                          |        |
|------------|---------|--------------------------|--------|
| Length     | 50.5 mm | Width                    | 5.1 mm |
| Height     | 43 mm   | Height of lowest version | 44 mm  |
| Net weight | 5.4 g   |                          |        |

**Temperatures**

|                                  |        |                                  |        |
|----------------------------------|--------|----------------------------------|--------|
| Operating temperature            |        | Storage temperature              |        |
| Continuous operating temp., min. | -50 °C | Continuous operating temp., max. | 120 °C |

**Rated data IECEx/ATEX**

|                           |                                     |                                |   |
|---------------------------|-------------------------------------|--------------------------------|---|
| Certificate No. (ATEX)    | KEMA97ATEX4677U                     | ATEX certificate               | KEMA97ATEX4677U_d.pdf   |
| ATEX certificate          | KEMA97ATEX4677U_e.pdf               | Max. voltage (ATEX)            | 550 V   |
| Current (ATEX)            | 21 A                                | Wire cross section max. (ATEX) | 2.5 mm <sup>2</sup>   |
| Voltage, cross-connection |                                     | Operating temperature range    | For operating temperature range see EC Design Test Certificate / IEC Ex-Certificate of Conformity |
| Marking EN 60079-7        | CrossConnectionGuide.pdf<br>Ex e II | Marking ATEX Directive 94/9/EC | II 2 G D  |

**Additional technical data**

|                          |  |                             |         |
|--------------------------|--|-----------------------------|---------|
| Explosion-tested version | Yes  | Number of similar terminals | 1       |
| Open sides               | right  | Type of mounting            | Snap-on |
| Version                  | Tension-clamp connection, for plug-in cross-connector, One end without connector |                             |         |

**CSA ratings data**

|                               |                |                               |        |
|-------------------------------|----------------|-------------------------------|--------|
| Certificate No. (CSA)         | 200039-1194786 | Voltage size C (CSA)          | 600 V  |
| Current size C (CSA)          | 24 A           | Wire cross section max. (CSA) | 12 AWG |
| Wire cross section min. (CSA) | 26 AWG         |                               |        |

**Clampable wires (additional connection)**

|   |                     |   |                     |
|---|---------------------|---|---------------------|
| Conductor cross-section, flexible plus plastic collar DIN 46228/1, further connection, min. | 0.5 mm <sup>2</sup> | Conductor cross-section, flexible plus plastic collar DIN 46228/1, further connection, max. | 2.5 mm <sup>2</sup> |
|---|---------------------|---|---------------------|

**Z terminal with tension spring connection  
ZDU 2.5-2 BL**

**Weidmüller Interface GmbH & Co. KG**  
 Klingenbergstraße 16  
 D-32758 Detmold  
 Germany  
 Fon: +49 5231 14-0  
 Fax: +49 5231 14-292083  
 www.weidmueller.com

**Technical data****Clampable wires (rated connection)**

|   |                          |   |                      |
|---|--------------------------|---|----------------------|
| Type of connection  | Tension clamp connection | Stripping length  | 10 mm                |
| Blade size  | 0.6 x 3.5 mm             | Connection direction  | Inclined / angled    |
| Number of connections   | 2                        | Clamping range, rated connection, min.  | 0.13 mm <sup>2</sup> |
| Clamping range, rated connection, max.  | 4 mm <sup>2</sup>        | Gauge to IEC 60947-1  | A2                   |
| Wire connection cross section, solid core, max. rated connection  | 0.5 mm <sup>2</sup>      | Wire connection cross section, solid core max. rated connection   | 4 mm <sup>2</sup>    |
| Wire connection cross section, finely stranded, max.  | 2.5 mm <sup>2</sup>      | Wire connection cross-section, finely stranded, min.  | 0.5 mm <sup>2</sup>  |
| Wire connection cross section, finely stranded with wire-end ferrules DIN 46228/1, rated connection, min.                             | 0.5 mm <sup>2</sup>      | Wire connection cross section, finely stranded with wire-end ferrules DIN 46228/1, rated connection, max.                     | 2.5 mm <sup>2</sup>  |
| Cross-section for connected conductor, finely stranded with wire-end ferrules and plastic collars DIN 46228/4, rated connection, min. | 0.5 mm <sup>2</sup>      | Wire connection cross-section, finely stranded with wire-end ferrules and plastic collars DIN 46228/4, rated connection, max. | 1.5 mm <sup>2</sup>  |
| Wire connection cross section AWG, min.   | AWG 26                   | Wire connection cross section AWG, max.   | AWG 12               |

**Rated data**

|               |               |                                 |      |
|---------------|---------------|---------------------------------|------|
| Rated voltage | 800 V         | Rated impulse withstand voltage | 8 kV |
| Rated current | 24 A          | Current at maximum wires        | 24 A |
| Standards     | IEC 60947-7-1 | Pollution severity              | 3    |

**UL ratings data**

|  |                 |  |        |
|--|-----------------|--|--------|
| Certificate No. (cURus)                    | E60693VOL1SEC52 | Conductor size Factory wiring max. (cURus) | 12 AWG |
| Conductor size Factory wiring min. (cURus) | 26 AWG          | Conductor size Field wiring max. (cURus)   | 12 AWG |
| Conductor size Field wiring min. (cURus)   | 26 AWG          | Current size C (cURus)                     | 24 A   |
| Voltage size C (cURus)                     | 600 V           |  |        |

**Material data**

|                     |       |                           |       |
|---------------------|-------|---------------------------|-------|
| Insulating material | Wemid | Material                  | Wemid |
| Colour              | Blue  | UL 94 flammability rating | V-0   |

**System specifications**

|                                   |   |                                  |                          |
|-----------------------------------|---|----------------------------------|--------------------------|
| Product family                    | Z terminal with tension spring connection | Type of connection               | Tension clamp connection |
| Connection direction              | Inclined / angled                         | Number of levels                 | 1                        |
| Number of connections             | 2   | No. of clamping points per level | 2                        |
| Levels cross-connected internally | No  | Mounting rail                    | TS 35                    |
| End cover plate required          | Yes                                       |                                  |                          |

**Classifications**

|            |             |            |             |
|------------|-------------|------------|-------------|
| ETIM 3.0   | EC000897    | UNSPSC     | 30-21-18-11 |
| eClass 5.1 | 27-14-11-20 | eClass 6.2 | 27-14-11-20 |
| eClass 7.1 | 27-14-11-20 |            |             |

**Data sheet**

**Z terminal with tension spring connection  
ZDU 2.5-2 BL**

**Weidmüller Interface GmbH & Co. KG**  
 Klingenbergstraße 16  
 D-32758 Detmold  
 Germany  
 Fon: +49 5231 14-0  
 Fax: +49 5231 14-292083  
 www.weidmueller.com

**Technical data**

**Product information**

|                                 |   |
|---------------------------------|---|
| Descriptive text ordering data  | Rated voltage is reduced to 400 V when using the cross-connector.   |
| Descriptive text technical data | 2.5 mm <sup>2</sup> flexible wires with wire-end ferrules are crimped with the Weidmüller PZ 6/5 crimping tool. |
| Descriptive text accessories    | The rated voltage is decreased to 250 V when using the shielding rail LS 2.8 (1056400000).                      |

**Approvals**

Approvals



ROHS

Conform

**Z terminal with tension spring connection  
ZDU 2.5-2 BL**

**Weidmüller Interface GmbH & Co. KG**  
Klingenbergstraße 16  
D-32758 Detmold  
Germany  
Fon: +49 5231 14-0  
Fax: +49 5231 14-292083  
www.weidmueller.com

**Accessories**

**ZTA 4**



Weidmüller offers users of modular terminals of the Z-Series a comprehensive range of accessories that render possible appropriate solutions for all - even non-standard - tasks.  
The accessories must comply with the same quality standards as the modular terminals themselves.

**General ordering data**

| Type  | Order No.                  | Version                              | GTIN (EAN)    | Qty.      |
|-------|----------------------------|--------------------------------------|---------------|-----------|
| ZTA 4 | <a href="#">1688110000</a> | Test adapter, Rated control voltage: | 4008190855666 | 25 pc(s). |

**ZAD**



Weidmüller offers users of modular terminals of the Z-Series a comprehensive range of accessories that render possible appropriate solutions for all - even non-standard - tasks.  
The accessories must comply with the same quality standards as the modular terminals themselves.

**General ordering data**

| Type         | Order No.                  | Version         | GTIN (EAN)    | Qty.      |
|--------------|----------------------------|-----------------|---------------|-----------|
| ZAD 1/4-2 GE | <a href="#">1764560000</a> | Z-series, Cover | 4032248066063 | 20 pc(s). |

**Slotted screwdriver**

Slotted screwdriver with rounded blade SD DIN 5265, ISO 2380/2, output to DIN 5264, ISO 2380/1.  
ChromTop tip, SoftFinish grip



**General ordering data**

| Type               | Order No.                  | Version  | GTIN (EAN)    | Qty.     |
|--------------------|----------------------------|--|---------------|----------|
| SDS<br>0.6X3.5X100 | <a href="#">9008330000</a> | Screwdriver, Blade width<br>(B): 3.5 mm, Blade length:<br>100 mm, Blade thickness<br>(A): 0.6 mm | 4032248056286 | 1 pc(s). |

**Z terminal with tension spring connection  
ZDU 2.5-2 BL**

**Weidmüller Interface GmbH & Co. KG**  
 Klingenbergstraße 16  
 D-32758 Detmold  
 Germany  
 Fon: +49 5231 14-0  
 Fax: +49 5231 14-292083  
 www.weidmueller.com

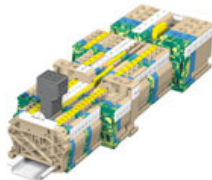
**Accessories**
**Blank**


WS markers are the perfect match for the W-series connectors. Thanks to their system compatibility, the WS tags can also be used with the I-series and the Z-series. The large marking surfaces do not only permit long character strings but also multi-line text. WS markers are ideal for labels with long, customised character strings. Thanks to the proven MultiCard format, printing with laser printer, PrintJet ADVANCED, plotter or MC-Mobilo is possible.

- Can be fitted in strips or individually
- Markers in proven MultiCard format

**General ordering data**

| Type       | Order No.                  | Version  | GTIN (EAN)    | Qty.       |
|------------|----------------------------|--|---------------|------------|
| WS 14/5 MC | <a href="#">1768090000</a> | Terminal markers,<br>MultiCard, 14 x 5 mm,<br>Polyamide 66, Colour:<br>White | 4032248106271 | 480 pc(s). |

**Cross-connection**


A plug-in cross-connection system (ZQV) is available for all modular terminals of the P-series.

**General ordering data**

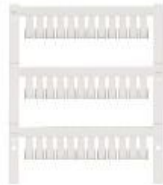
| Type       | Order No.                  | Version   | GTIN (EAN)    | Qty.      |
|------------|----------------------------|---|---------------|-----------|
| ZQV 2.5/20 | <a href="#">1908960000</a> | Z-series, Accessories,<br>Cross-connector, For the<br>terminals, No. of poles: 20 | 4032248535293 | 20 pc(s). |

**Z terminal with tension spring connection  
ZDU 2.5-2 BL**

**Weidmüller Interface GmbH & Co. KG**  
 Klingenbergstraße 16  
 D-32758 Detmold  
 Germany  
 Fon: +49 5231 14-0  
 Fax: +49 5231 14-292083  
 www.weidmueller.com

**Accessories**

**Blank**



ZS markers - in proven MultiCard-format - have been developed specifically for the Z-series. They have a large printing area. The hinged mechanism even allows access to cross-connectors without dismantling. Quick installation is guaranteed by the fact that the single tags are clipped on in strips. The single tags are easy to separate.

- Hinged marker area
- Can be fitted in strips or individually
- Markers in proven MultiCard format

**General ordering data**

| Type       | Order No.                  | Version  | GTIN (EAN)    | Qty.       |
|------------|----------------------------|--|---------------|------------|
| ZS 10/5 MC | <a href="#">1610000000</a> | Terminal markers,<br>MultiCard, 10 x 5 mm,<br>Polyamide 66, Colour:<br>White | 4008190263171 | 480 pc(s). |
| NE WS      |                            |  |               |            |

**Custom printing**



The dekafix (DEK) marker is the universal marker for all conductor and plug-in connectors as well as for electronic sub-assemblies. The system is ideal for short number sequences and covers a large range of ready-printed markers.

Strips for fast installation in one work step. The printing is easy to read, rich in contrast, and is available in five widths.

- Large range of ready-to-use markers
- Strips for fast installation
- Connector markers, suitable for all Weidmüller cable connectors
- Available as blank cards, MultiCard or as cards with standard printing

**General ordering data**

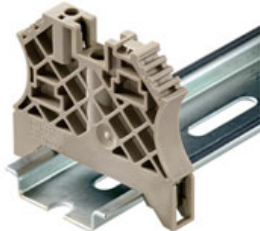
| Type       | Order No.                  | Version   | GTIN (EAN)    | Qty.       |
|------------|----------------------------|---|---------------|------------|
| DEK 5/5 MC | <a href="#">1609810000</a> | Terminal markers,<br>MultiCard, 5 x 5 mm,<br>Polyamide 66, Colour: To<br>customer specification | 4008190456597 | 200 pc(s). |
| SDR        |                            |   |               |            |

## Z terminal with tension spring connection ZDU 2.5-2 BL

**Weidmüller Interface GmbH & Co. KG**  
Klingenbergstraße 16  
D-32758 Detmold  
Germany  
Fon: +49 5231 14-0  
Fax: +49 5231 14-292083  
www.weidmueller.com

## Accessories

### for TS 35 terminal rail



Weidmüller's range of products includes end brackets that guarantee a permanent, reliable mounting on the terminal rail and prevent sliding. Versions with and without screws are available. The end brackets include marking options, also for group markers, and also a test plug holder.

### General ordering data

| Type              | Order No.                  | Version                  | GTIN (EAN)    | Qty.       |
|-------------------|----------------------------|--------------------------|---------------|------------|
| ZEW 35/2          | <a href="#">8630740000</a> | Accessories, End bracket | 4032248348916 | 20 pc(s).  |
| EW 35 GR<br>7032  | <a href="#">0383530000</a> | Accessories, End bracket | 4008190027322 | 50 pc(s).  |
| EW 35             | <a href="#">0383560000</a> | Accessories, End bracket | 4008190181314 | 50 pc(s).  |
| EW 35/<br>SCHA/M3 | <a href="#">0258660000</a> | Accessories, End bracket | 4008190033477 | 20 pc(s).  |
| ZEW 35            | <a href="#">9540000000</a> | Accessories, End bracket | 4008190956264 | 20 pc(s).  |
| WEW 35/2          | <a href="#">1061200000</a> | Accessories, End bracket | 4008190030230 | 100 pc(s). |
| WEW 35/1          | <a href="#">1059000000</a> | Accessories, End bracket | 4008190172282 | 50 pc(s).  |

### ZQV 2.5



Weidmüller offers users of modular terminals of the Z-Series a comprehensive range of accessories that render possible appropriate solutions for all - even non-standard - tasks.

The accessories must comply with the same quality standards as the modular terminals themselves.

### General ordering data

| Type      | Order No.                  | Version  | GTIN (EAN)    | Qty.      |
|-----------|----------------------------|--|---------------|-----------|
| ZQV 2.5/9 | <a href="#">1608930000</a> | Z-series, Accessories,<br>Cross-connector, For the<br>terminals, No. of poles: 9 | 4008190117009 | 20 pc(s). |
| ZQV 2.5/6 | <a href="#">1608900000</a> | Z-series, Accessories,<br>Cross-connector, For the<br>terminals, No. of poles: 6 | 4008190149840 | 20 pc(s). |
| ZQV 2.5/8 | <a href="#">1608920000</a> | Z-series, Accessories,<br>Cross-connector, For the<br>terminals, No. of poles: 8 | 4008190061531 | 20 pc(s). |
| ZQV 2.5/2 | <a href="#">1608860000</a> | Z-series, Accessories,<br>Cross-connector, For the<br>terminals, No. of poles: 2 | 4008190123680 | 60 pc(s). |
| ZQV 2.5/7 | <a href="#">1608910000</a> | Z-series, Accessories,<br>Cross-connector, For the<br>terminals, No. of poles: 7 | 4008190159665 | 20 pc(s). |

Creation date November 21, 2013 3:19:40 PM CET



**Z terminal with tension spring connection  
ZDU 2.5-2 BL**

**Weidmüller Interface GmbH & Co. KG**  
Klingenbergstraße 16  
D-32758 Detmold  
Germany  
Fon: +49 5231 14-0  
Fax: +49 5231 14-292083  
www.weidmueller.com

**Accessories**

|            |                            |   |                         |
|------------|----------------------------|---|-------------------------|
| ZQV 2.5/10 | <a href="#">1608940000</a> | Z-series, Accessories,<br>Cross-connector, For the<br>terminals, No. of poles: 10 | 4008190099060 20 pc(s). |
| ZQV 2.5/4  | <a href="#">1608880000</a> | Z-series, Accessories,<br>Cross-connector, For the<br>terminals, No. of poles: 4  | 4008190082208 60 pc(s). |
| ZQV 2.5/5  | <a href="#">1608890000</a> | Z-series, Accessories,<br>Cross-connector, For the<br>terminals, No. of poles: 5  | 4008190065713 20 pc(s). |
| ZQV 2.5/3  | <a href="#">1608870000</a> | Z-series, Accessories,<br>Cross-connector, For the<br>terminals, No. of poles: 3  | 4008190061630 60 pc(s). |
| ZQV 2.5/50 | <a href="#">1697540000</a> | Z-series, Accessories,<br>Cross-connector, For the<br>terminals, No. of poles: 50 | 4008190883256 10 pc(s). |

**ZAP/TW 7**



Weidmüller offers users of modular terminals of the Z-Series a comprehensive range of accessories that render possible appropriate solutions for all - even non-standard - tasks.  
The accessories must comply with the same quality standards as the modular terminals themselves.

**General ordering data**

| Type       | Order No.                  | Version                        | GTIN (EAN)    | Qty.               |
|------------|----------------------------|--------------------------------|---------------|--------------------|
| ZAP/TW7 BL | <a href="#">1706120000</a> | Z-series, End plate, Partition | 4008190915469 | 50 pc(s).<br>plate |
| ZAP/TW7 OR | <a href="#">1706130000</a> | Z-series, End plate, Partition | 4008190915476 | 50 pc(s).<br>plate |
| ZAP/TW7    | <a href="#">1706110000</a> | Z-series, End plate, Partition | 4008190915452 | 50 pc(s).<br>plate |