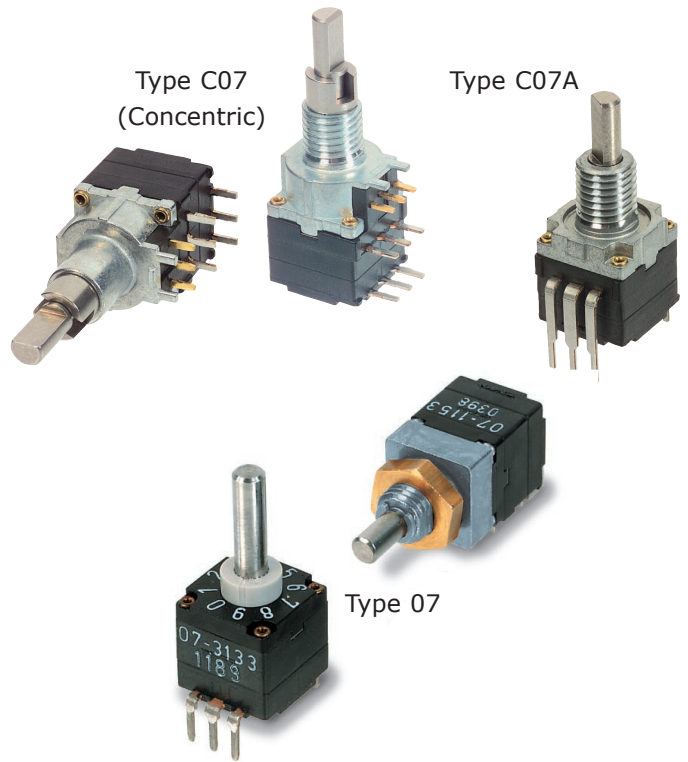


# Coded Switches Overview

- rugged design
- lead free reflowable
- packaged for modern manufacturing methods
- easy to modify
- sealable up to IP 68 (2bar)

Our ability to adapt existing components to your application, makes Elma your preferred solution partner.



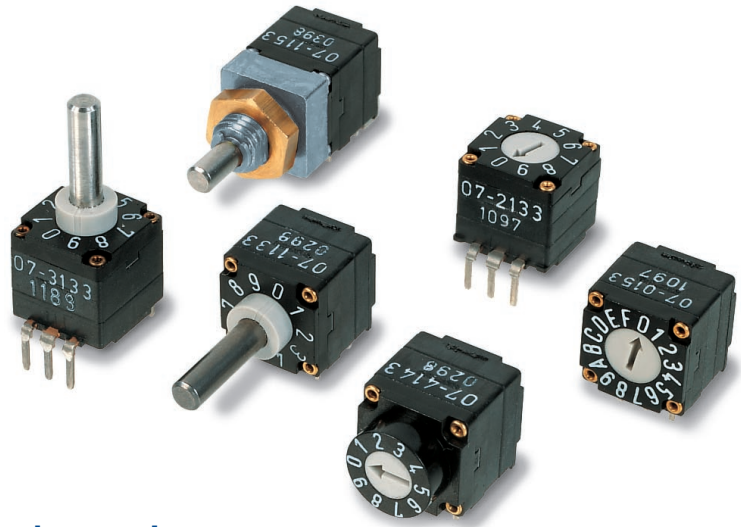
## Technical Data

Designation	Type 07	Type C07A	Type C07 (Concentric)
<b>Dimension</b>	10 x 10 mm	10 x 10 mm	10 x 10 mm
<b>Connection</b>	THT (DIL)	THT (DIL)	THT (DIL)
<b>Function (Code)</b>	BCD (10 pos.) BCD compl. (10 pos.) HEX (16 pos.) HEX compl. (16 pos.) Gray Code 0 - F (16 pos.)	HEX (16 pos.) HEX compl. (16 pos.) Gray Code 0 - F (16 pos.)	HEX (16 pos.) Gray Code 0 - F (16 pos.) one pole 3 pos. center off
<b>Indexing angle</b>	22.5°, 36°	22.5°	22.5°
<b>Processing</b>	wave soldering reflow (on request)	wave soldering reflow(on request)	wave soldering reflow
<b>Contact material</b>	3µm gold plated	3µm gold plated	3µm gold plated
<b>Life expectancy:</b>			
Switching cycles	> 10'000 cycles	> 10'000 cycles	> 10'000 cycles 16 pos. > 7'500 cycles 3 pos.
Rotations			
<b>Contact resistance</b>	< 50 mΩ	< 50 mΩ	16 pos. and 3 pos. max 1Ω
	page 6-8	page 9	page 10-11
<b>Technical Data</b>	page 60-64	page 65-67	page 68-70

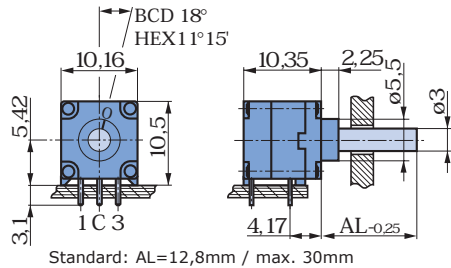
The following rugged switches are also available in coded (binary code) versions	Type 04	Type 06	Type 08
	coding 0-9	coding 0-11	coding 0-11
	page 22	page 24	page 28

# Coded Switches Type 07

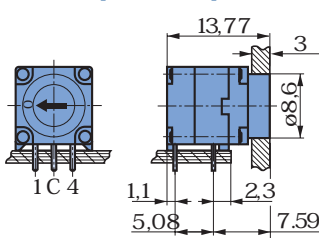
- 10/16 position coded output
- >10'000 switching cycles
- up to 3,5 Ncm torque
- small and rugged
- steel spindle-shaft
- sealable up to IP 68 (2bar)
- reflow version available



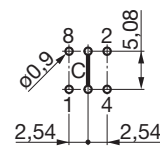
## Horizontal



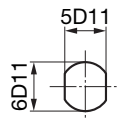
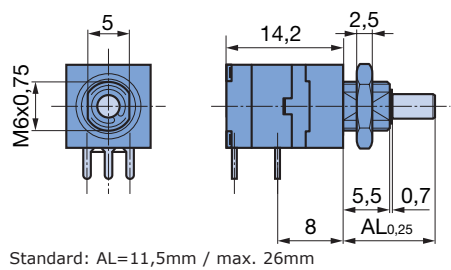
## Front panel operation



Drilling diagram  
View from component side



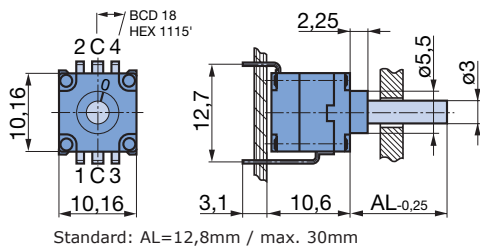
## Horizontal for panel mounting



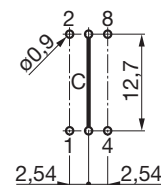
Front panel  
cut out

Waterproof (WD)  
O-Ring and nut supplied

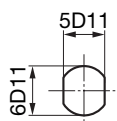
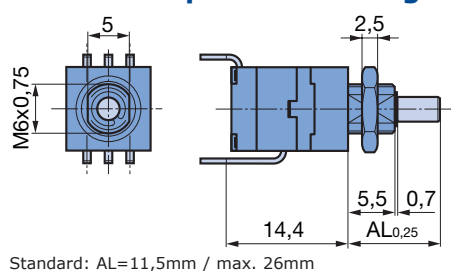
## Vertical



Drilling diagram  
View from component side



## Vertical for panel mounting



Front panel  
cut out

## Possible modifications on request

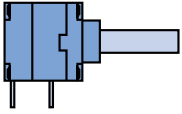
- special type of shaft (length, form)
- special torque
- panel mounting
- waterproof
- different number of positions (internal stop)
- anti-static packaging
- shortened bush
- tape & reel packaging

1 mm = 0.04 inch, 1 inch = 25.4 mm

Technical Data and Modified Versions see page 60-64

# Type 07 Horizontal

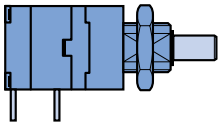
## With spindle-shaft



Coding	Switching function	Position	Indexing angle	with end stop	endless rotating
BCD	shorting	10 (0-9)	36°	07-1133	07-1033
	non-shorting	10 (0-9)	36°	07-1134	07-1034
BCD compl.	shorting	10 (0-9)	36°	07-1143	07-1043
	shorting	16 (0-F)	22,5°	07-1153	07-1053
HEX	shorting	16 (0-F)	22,5°	07-1154	07-1054
	shorting	16 (0-F)	22,5°	07-1163	07-1063
HEX compl.	shorting	16 (0-F)	22,5°	07-1163	07-1063
Gray code	shorting	16 (0-F)	22,5°	07-1173	07-1073

packing unit : 50 pieces

## With spindle-shaft / with end stop / panel mounting / waterproof IP 68/2bar

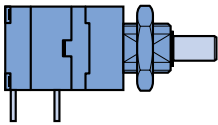


Coding	Switching function	Position	Indexing angle	with end stop
BCD	shorting	10 (0-9)	36°	07-1133-300000
	non-shorting	10 (0-9)	36°	07-1134-300000
BCD compl.	shorting	10 (0-9)	36°	07-1143-300000
	shorting	16 (0-F)	22,5°	07-1153-300000
HEX	shorting	16 (0-F)	22,5°	07-1154-300000
	shorting	16 (0-F)	22,5°	07-1163-300000
HEX compl.	shorting	16 (0-F)	22,5°	07-1163-300000
Gray code	shorting	16 (0-F)	22,5°	07-1173-300000

O-Ring and nut supplied

packing unit : 50 pieces

## With spindle-shaft / endless rotating / panel mounting / waterproof IP 68/2bar

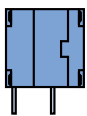


Coding	Switching function	Position	Indexing angle	endless rotating
BCD	shorting	10 (0-9)	36°	07-1033-300000
	non-shorting	10 (0-9)	36°	07-1034-300000
BCD compl.	shorting	10 (0-9)	36°	07-1043-300000
	shorting	16 (0-F)	22,5°	07-1053-300000
HEX	shorting	16 (0-F)	22,5°	07-1054-300000
	shorting	16 (0-F)	22,5°	07-1063-300000
HEX compl.	shorting	16 (0-F)	22,5°	07-1063-300000
Gray code	shorting	16 (0-F)	22,5°	07-1073-300000

O-Ring and nut supplied

packing unit : 50 pieces

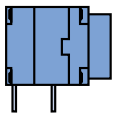
## Screwdriver actuation



Coding	Switching function	Position	Indexing angle	with end stop	endless rotating
BCD	shorting	10 (0-9)	36°	07-0133	07-0033
	non-shorting	10 (0-9)	36°	07-0134	07-0034
BCD compl.	shorting	10 (0-9)	36°	07-0143	07-0043
	shorting	16 (0-F)	22,5°	07-0153	07-0053
HEX	shorting	16 (0-F)	22,5°	07-0154	07-0054
	shorting	16 (0-F)	22,5°	07-0163	07-0063
HEX compl.	shorting	16 (0-F)	22,5°	07-0163	07-0063
Gray code	shorting	16 (0-F)	22,5°	07-0173	07-0073

packing unit : 50 pieces

## Front panel operation / screwdriver actuation

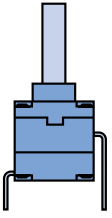


Coding	Switching function	Position	Indexing angle	with end stop	endless rotating
BCD	shorting	10 (0-9)	36°	07-4133	07-4033
	non-shorting	10 (0-9)	36°	07-4134	07-4034
BCD compl.	shorting	10 (0-9)	36°	07-4143	07-4043
	shorting	16 (0-F)	22,5°	07-4153	07-4053
HEX	shorting	16 (0-F)	22,5°	07-4154	07-4054
	shorting	16 (0-F)	22,5°	07-4163	07-4063
HEX compl.	shorting	16 (0-F)	22,5°	07-4163	07-4063
Gray code	shorting	16 (0-F)	22,5°	07-4173	07-4073

packing unit : 50 pieces

# Type 07 Vertical

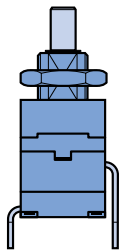
## With spindle-shaft



Coding	Switching function	Position	Indexing angle	with end stop	endless rotating
BCD	shorting	10 (0-9)	36°	07-3133	07-3033
	non-shorting	10 (0-9)	36°	07-3134	07-3034
BCD compl.	shorting	10 (0-9)	36°	07-3143	07-3043
HEX	shorting	16 (0-F)	22,5°	07-3153	07-3053
	non-shorting	16 (0-F)	22,5°	07-3154	07-3054
HEX compl.	shorting	16 (0-F)	22,5°	07-3163	07-3063
Gray code	shorting	16 (0-F)	22,5°	07-3173	07-3073

packing unit : 50 pieces

## With spindle-shaft / with end stop / panel mounting / waterproof IP 68/2bar

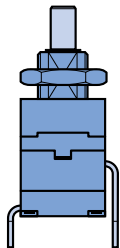


Coding	Switching function	Position	Indexing angle	with end stop
BCD	shorting	10 (0-9)	36°	07-3133-300000
	non-shorting	10 (0-9)	36°	07-3134-300000
BCD compl.	shorting	10 (0-9)	36°	07-3143-300000
HEX	shorting	16 (0-F)	22,5°	07-3153-300000
	non-shorting	16 (0-F)	22,5°	07-3154-300000
HEX compl.	shorting	16 (0-F)	22,5°	07-3163-300000
Gray code	shorting	16 (0-F)	22,5°	07-3173-300000

O-Ring and nut supplied

packing unit : 50 pieces

## With spindle-shaft / endless rotating / panel mounting / waterproof IP 68/2bar

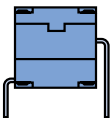


Coding	Switching function	Position	Indexing angle	endless rotating
BCD	shorting	10 (0-9)	36°	07-3033-300000
	non-shorting	10 (0-9)	36°	07-3034-300000
BCD compl.	shorting	10 (0-9)	36°	07-3043-300000
HEX	shorting	16 (0-F)	22,5°	07-3053-300000
	non-shorting	16 (0-F)	22,5°	07-3054-300000
HEX compl.	shorting	16 (0-F)	22,5°	07-3063-300000
Gray code	shorting	16 (0-F)	22,5°	07-3073-300000

O-Ring and nut supplied

packing unit : 50 pieces

## Screwdriver actuation



Coding	Switching function	Position	Indexing angle	with end stop	endless rotating
BCD	shorting	10 (0-9)	36°	07-2133	07-2033
	non-shorting	10 (0-9)	36°	07-2134	07-2034
BCD compl.	shorting	10 (0-9)	36°	07-2143	07-2043
HEX	shorting	16 (0-F)	22,5°	07-2153	07-2053
	non-shorting	16 (0-F)	22,5°	07-2154	07-2054
HEX compl.	shorting	16 (0-F)	22,5°	07-2163	07-2063
Gray code	shorting	16 (0-F)	22,5°	07-2173	07-2073

packing unit : 50 pieces