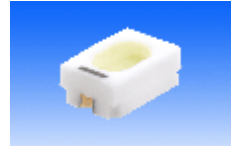


SLOAN AG

Birmannsgasse 8
 CH-4009 Basel
 Tel. ++41 61 264 10 60
 Fax. ++41 61 261 10 75
 info@sloan-basel.com

Series: Ceramic Type (2x3mm)



SMD- LED's

blue / green / red / white



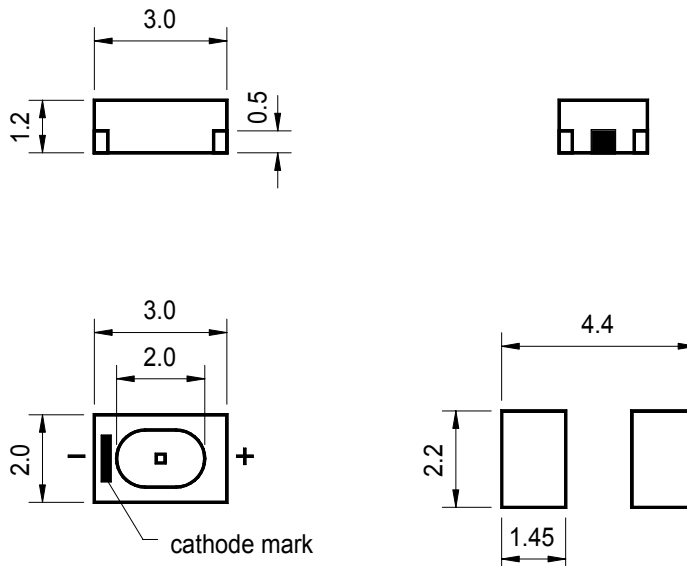
All specification according to information from our manufacturers, without additional guarantee on our part. Further types on request.

Part No:	Emitted color	Electro-optical-characteristics Ta=25C° IF=20mA						Absolute Maximum Ratings Ta=25C°			Lens	Operating Temp. [C°]	Storage Temp. [C°]	
		Peak Wave-length	Luminous Intensity [mcd]			Viewing angle 2θ1/2	DC Forward Voltage VF[V]	Continuous Forward Current IF[mA]	Pulse Forward Current IFp[mA]	Power Dissipation PD[mW]				
			min.	typ.	max.		typ.	max.						
SMD-B01N-WS	blue	470	88	104	124	120°	3.6	4.0	25	80*	100	water clear	-20~+85	-30~+100
SMD-B01N-WT	blue	470	124	148	178	120°	3.6	4.0	25	80*	100			
SMD-G01N-GS	green	525	390	460	560	120°	3.5	4.0	25	80*	100			
SMD-G01N-GT	green	525	560	640	780	120°	3.5	4.0	25	80*	100			
SMD-R01N-RT	red	630	232	276	320	120°	2.2	2.4	40	160*	105			
SMD-W01N-BS	white	x=0.31 y=0.32	310	370	440	110°	3.6	4.0	30	100*	120			
SMD-W01N-BT	white	x=0.31 y=0.32	440	520	620	110°	3.6	4.0	30	100*	120			

* Peak Forward Current (1/10 Duty Cycle, 0.1ms Pulse Width)

2500pcs/Reel

Package Dimensions



1. All dimensions are in millimeters.
2. Tolerance is + 0.25mm unless otherwise specified.
3. Specifications are subject to change without notice