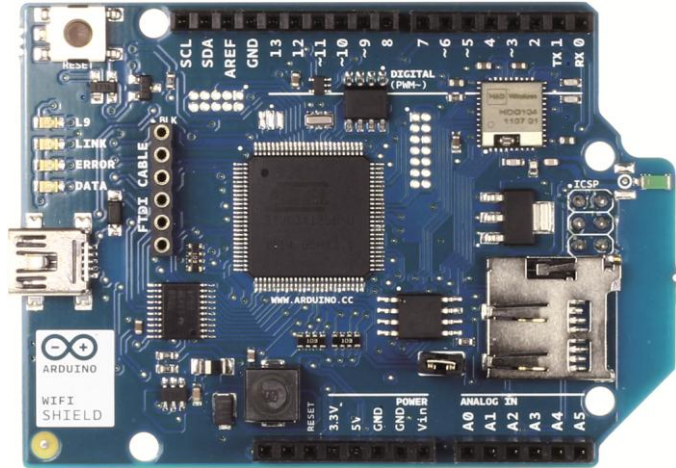


Overview

The Arduino WiFi Shield connects your Arduino to the internet wirelessly. Connect it to your wireless network by following a few simple instructions to start controlling your world through the internet. As always with Arduino, every element of the platform – hardware, software and documentation – is freely available and open-source. This means you can learn exactly how it's made and use its design as the starting point for your own circuits.



- + Requires an Arduino board (not included)
- + Operating voltage 5V (supplied from the Arduino Board)
- + Connection via: 802.11b/g networks
- + Encryption types: WEP and WPA2 Personal
- + Connection with Arduino on SPI port
- + on-board micro SD slot
- + ICSP headers
- + FTDI connection for serial debugging of WiFi shield
- + Mini-USB for updating WiFi shield firmware

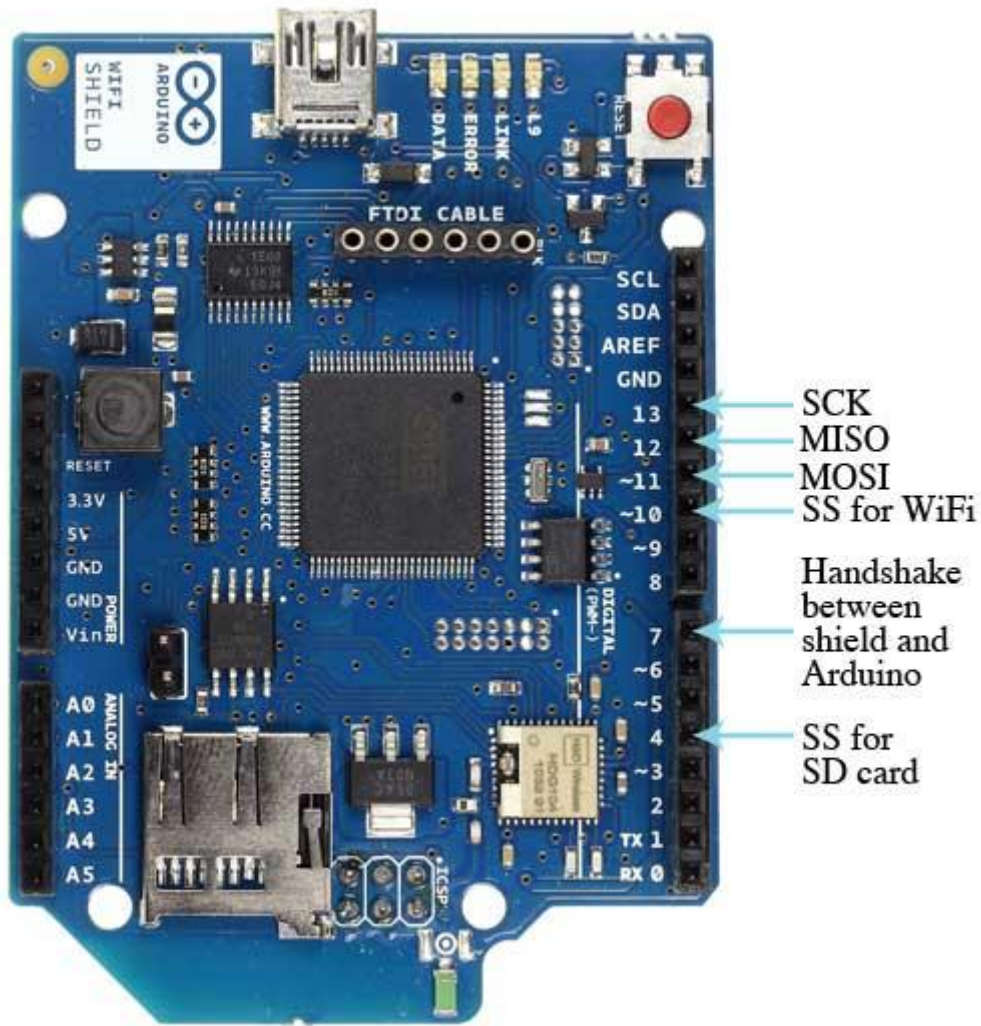
Description

The Arduino WiFi Shield allows an Arduino board to connect to the internet using the 802.11 wireless specification (WiFi). It is based on the [HDG104](#) Wireless LAN 802.11b/g System in-Package. An Atmega 32UC3 provides a network (IP) stack capable of both TCP and UDP. Use the [WiFi library](#) to write sketches which connect to the internet using the shield. The WiFi shield connects to an Arduino board using long wire-wrap headers which extend through the shield. This keeps the pin layout intact and allows another shield to be stacked on top. The WiFi Shield can connect to wireless networks which operate according to the 802.11b and 802.11g specifications.

There is an onboard micro-SD card slot, which can be used to store files for serving over the network. It is compatible with the Arduino Uno and Mega. The onboard microSD card reader is accessible through the SD Library. When working with this library, SS is on Pin 4.

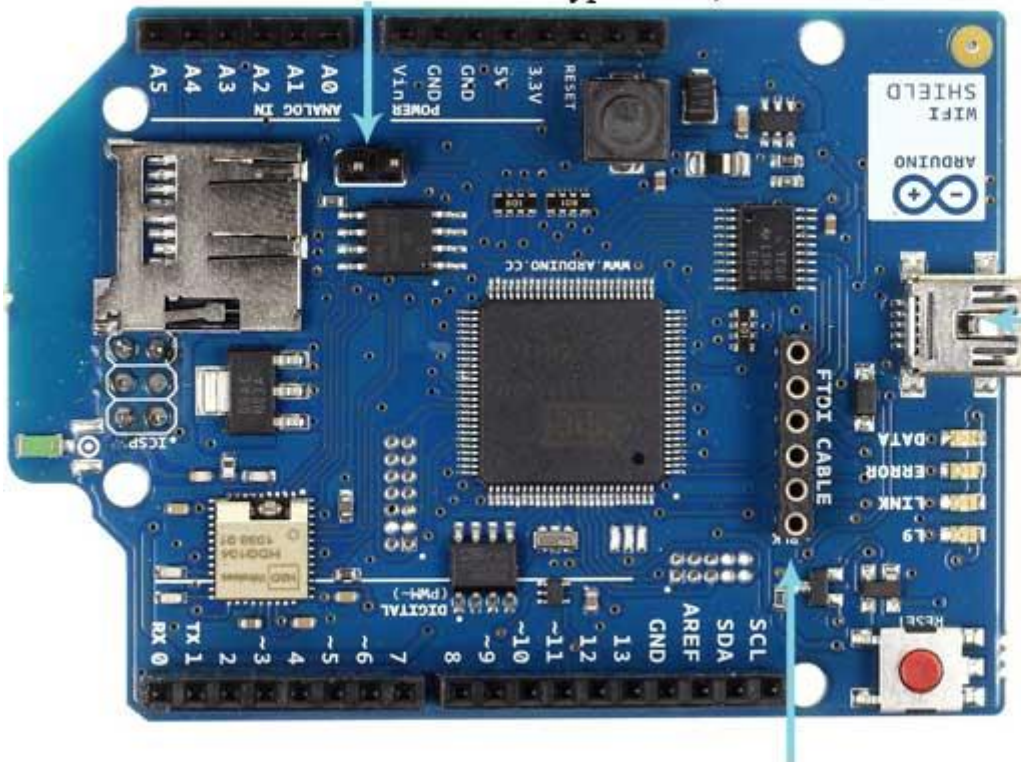
Arduino communicates with both the Wifi shield's processor and SD card using the SPI bus (through the ICSP header). This is on digital pins 11, 12, and 13 on the Uno and pins 50, 51, and 52 on the Mega. On both boards, pin 10 is used to select the HDG104 and pin 4 for the SD card. These pins cannot be used for general I/O. On the Mega, the hardware SS pin, 53, is not used to select either the HDG104 or the SD card, but it must be kept as an output or the SPI interface won't work.

Digital pin 7 is used as a handshake pin between the WiFi shield and the Arduino, and should not be used.



Note that because the HDG104 and SD card share the SPI bus, only one can be active at a time. If you are using both peripherals in your program, this should be taken care of by the corresponding libraries. If you're not using one of the peripherals in your program, however, you'll need to explicitly deselect it. To do this with the SD card, set pin 4 as an output and write a high to it. For the HDG104, set digital pin 10 as a high output. The shield can connect to encrypted networks that use either WPA2 Personal or WEP encryption. It can also connect to open networks. A network must broadcast its SSID for the shield to be able to connect. The reset button on the shield resets both the HDG104 and the Arduino board.

DFU programming jumper
(only used for updating shield firmware,
leave unconnected for typical use)



Micro-USB
used for
firmware
upgrades

FTDI connector for diagnostic communication

There is an onboard Mini-USB connector. This is not for programming an attached Arduino, it is for updating the Atmega 32U using the Atmel DFU protocol. The programming jumper adjacent to the power bus and analog inputs should be left unconnected for typical use. It is only used for DFU programming mode.

An onboard FTDI connection enables serial communication with the 32U for debugging purposes. A list of [available commands can be found here](#).

The shield contains a number of informational LEDs:

L9 (yellow) : this is tied to digital pin 9

LINK (green) : indicates a connection to a network

ERROR (red) : indicates when there is a communication error

DATA (blue) : indicates data being transmitted/received

See also: [getting started with the WiFi shield](#) and [WiFi library reference](#)