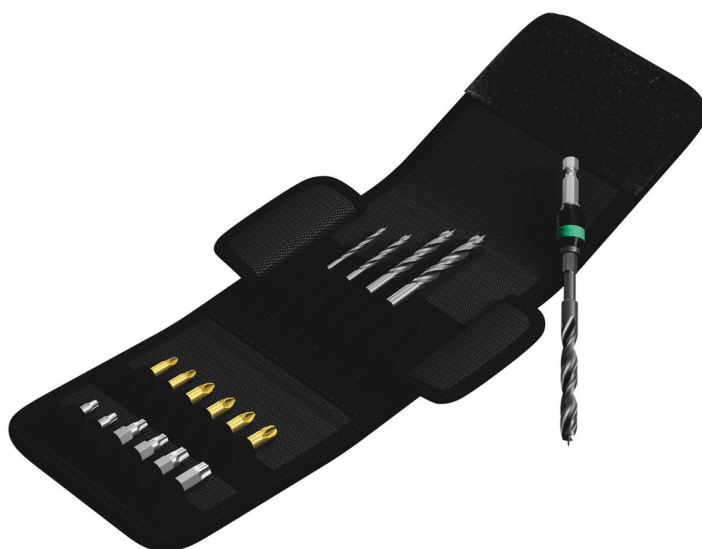


Bit Sets for Special Applications



EAN/GTIN:	4013288111661	Dimension:	140x115x45 mm
Part no.:	05104653001	Weight:	298 g
Article no.:	849/855/867/18	Country of origin:	CZ
		Customs tariff number:	82079030

- Ideal for mobile repair and assembly work
- Rapidaptor holder for rapid bit change
- 1/4" drive suitable for power screwdrivers
- Rapidaptor universal holder, wood twist drill bits and bits with 1/4" drive
- In practical and robust belt pouch

18-piece wood twist drill bit and bit set. High quality, metal twist drill bits for precise, splinter-free drilling in soft wood, hard wood and laminated panel material. Made out of high speed steel (HSS). A finely-tuned material elasticity provides for great durability. Very good concentricity. The hexagonal shaft ensures very good power transfer. The Rapidaptor universal holder ensures rapid bit change without any extra tools. Drive: 1/4" hexagon, suitable for holders with take-up as per DIN ISO 1173-D 6.3.

Weblink

http://products.wera.de/en/bits HOLDERS_ADAPTERS_BIT_SETS_BIT_SETS_FOR_SPECIAL_APPLICATIONS_849_855_867_18.html

Wera - 849/855/867/18
05104653001 - 4013288111661

Wera Werkzeuge GmbH
Korzter Straße 21-25
D-42349 Wuppertal
Tel: +49 (0)2 02 / 40 45-0
E-Mail: info@wera.de

Bit Sets for Special Applications

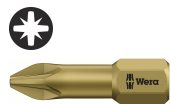
Content:



889/4/1 K
05052502001 1 x 1/4"x50



849 HSS
05104600001 1 x 3.0x70.0
05104601001 1 x 4.0x74.0
05104602001 1 x 5.0x85.0
05104603001 1 x 6.0x95.0
05104604001 1 x 8.0x110.0



855/1 TH PZ
05056910001 2 x PZ 1x25
05056915001 3 x PZ 2x25
05056925001 1 x PZ 3x25



867/1 TORX®
05066485001 1 x TX 10x25
05066486001 1 x TX 15x25
05066487001 1 x TX 20x25
05066488001 1 x TX 25x25
05066490001 1 x TX 30x25
05066491001 1 x TX 40x25

Twist drill bits for wood applications



Twist drill bits – for wood applications • 1/4" drive suitable for holders as per DIN 3126-D 6.3 (ISO 1173) • Hexagon shaft for very high torque transfer • HSS = high speed steel • Finely adjusted material elasticity for long service life • Excellent concentricity • Tough-absorbing tempered bits for particularly long service life

TH-Bits



TH-Bits are hard bits with a torsion zone. Torsion bits absorb the damaging peak torque loads in the torsion zone. This prevents premature wear and enhances the service life of the bits.

Rapidaptor holder



Rapid bit change without needing any additional tools. One-hand operation with a freely spinning sleeve for simplified guidance of the tool. Also available in a BiTorsion design.

Rapid-in and self-lock



The bit can be pushed into the adaptor without moving the sleeve. The lock is activated automatically as soon as the bit is applied to the screw. Bits are held securely and wobble-free.

Weblink

http://products.wera.de/en/bits_holders_adaptors_bit_sets_bit_sets_for_special_applications_849_855_867_18.html

Wera - 849/855/867/18
05104653001 - 4013288111661

Wera Werkzeuge GmbH
Korzter Straße 21-25
D-42349 Wuppertal
Tel: +49 (0)2 02 / 40 45-0
E-Mail: info@wera.de

Bit Sets for Special Applications

Rapid-out



Simply push the sleeve forward to change the bit. The spring mechanism lifts the bit off the magnet and unlocks the tool. The bit can be easily removed. The rapid-out function makes it easy to remove even the smallest bits without extra tools.

Chuck-all



The Rapidaptor quick-release chucks hold 1/4" DIN ISO 1173-C 6,3 and E 6,3 as well as Wera series 1 and 4 bits.

Single-hand function



Every function of the Rapidator quick-release chuck, such as inserting or releasing bits, can be carried out with one hand. This is faster, more economical and more ergonomic. There are no unnecessary manoeuvres.

Rapid-spin



The free-turning sleeve allows screw steadying at the start of the screwdriving process. This makes it easier to apply the tool to the screw and prevents slipping. It can also be used as a short extension for 1/4" applications e.g. in combination with the Wera Zyklus Ratchets.

Weblink

http://products.wera.de/en/bits_holders_adaptors_bit_sets_bit_sets_for_special_applications_849_855_867_18.html

Wera - 849/855/867/18
05104653001 - 4013288111661

Wera Werkzeuge GmbH
Korzter Straße 21-25
D-42349 Wuppertal
Tel: +49 (0)2 02 / 40 45-0
E-Mail: info@wera.de