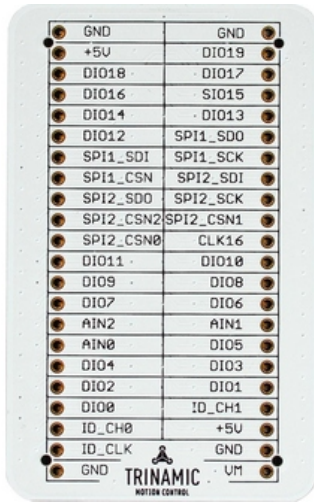


Eselsbruecke

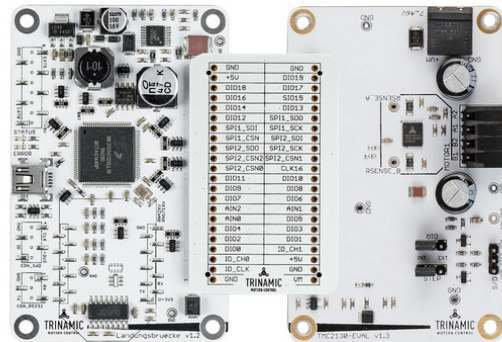
Document Revision V1.00 • 2018-July-06

Module Top View



Features and additional Resources

- Connector board for TRINAMIC'S evaluation board system
- Board width 1.5", board height 2.4"
- 2x 44-pin header rows, 0.1"
- Connector type [MPE Garry 090-3-044-1-F-XTO-0910](#)
- More information on www.trinamic.com



Schematics

