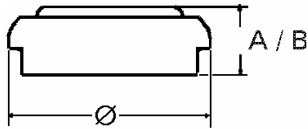


Data Sheet

Type Number 4626
Designation IEC LR 9
System Manganese Dioxide /
 Zinc / KOH - Electrolyte



Nominal Voltage 1,5 V
Typical Capacity C 200 mAh
 Load 300 Ohm, at 20°C down to 0.9 V

Weight (approx.) 3,3 g
Volume 1,01 ccm
Coding Date of Manufacturing
 Month/Year

Temperature Ranges min max.
 Storage -10°C 65 °C
 Discharge -10°C 65°C

Dimensions min max.
 Diameter (Ø) 15,20 16,00
 Height (A/B) 5,6 6,20

Segment Photo

Main Applications Photo
 Electronic
 Car Alarm

Typical Capacities (at 20°C)

Discharge Type	Load	End Voltage: 0.9 V
Continuous	300 Ω	Time: 48 h
24h/d, 7d/w		Capacity [mAh]: 200
Current [µA]:	5000	Energy [mWh]: 250