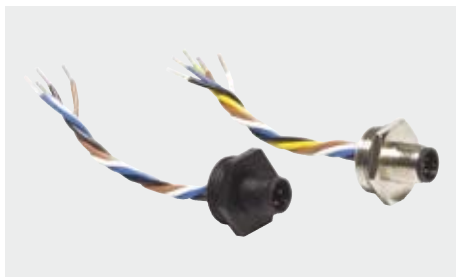


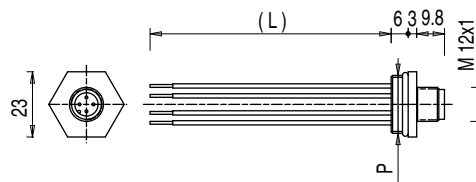
M12 male wired connectors



These standard male M12 connectors are ready for the installation on the switches. Their wires have the right length for the connection to the contact blocks and are provided with terminal pins. On request they can be delivered already wired to the switch. The connectors are used where a very short machine down time is critical (e.g. in big plants). The switch with connector can be replaced with an identical one very quickly, avoiding the possibility of incorrect wiring.

Technical data:

Max operating voltage:	250 Vac / 300 Vdc (4-5 poles) 30 Vac / 36 Vdc (8 poles)
Max operating current:	4 A (4-5 poles) 2 A (8 poles)
Protection degree:	IP68
Ambient temperature:	from -25°C to +80°C
Driving torque:	from 1 to 1,5 Nm
Conductors cross section:	0,5 mm ² (20 AWG) for 4 and 5 poles 0,25 mm ² (24 AWG) for 8 poles
Kind of contact:	gold plated

**Wires configuration of male connector**

4 poles		5 poles		8 poles	
Pin	Colour	Pin	Colour	Pin	Colour
1	Brown	1	Brown	1	White
2	White	2	White	2	Brown
3	Blue	3	Blue	3	Green
4	Black	4	Black	4	Yellow
		5	Grey	5	Grey
				6	Pink
				7	Blue
				8	Red

How to order

article		options	
VF CNM5PM-L100			
Body material		Cable length (L)	
M metal		8,5 cm (standard)	
P plastic		L100 100 cm	
		L200 200 cm	
Number of poles		Thread type	
4 4 poles		M M12x1	
5 5 poles		Connector thread	
8 8 poles		P PG 13,5	
		M M20 x 1,5	

Items available in stock

VF CNM5PM
VF CNP4PM

Attention! Items not available in stock, minimum order quantity 100 pcs.

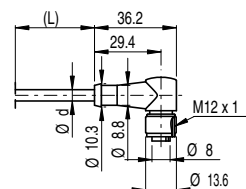
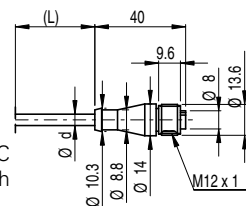
ATTENTION: always cut off the power supply before disconnecting the connector. The connector is not suitable to open electrical circuits.

M12 female wired connectors



Technical data:

- Polyurethane connector body
- Class 6 rated copper of the wire according to VDE 0295
- Gold plated contact (resistance < 5 mΩ)
- Self locking ring nut
- High flexibility wire suitable to be used in movable chains, with PVC sheath conforming to IEC 60332-3 and CEI 20-22II standards. With polyurethane sheath on request.



ø d: 5 mm for 4 and 5 poles
6 mm for 8 poles

Technical data:

Max operating voltage:	250 Vac / 300 Vdc (4-5 poles) 30 Vac / 36 Vdc (8 poles)
Max operating current:	4 A (4-5 poles) 2 A (8 poles)
Protection degree:	IP68
Ambient temperature:	from -25°C to +90°C for fixed laying from -15°C to +90°C for dynamic laying
Conductors cross section:	0,34 mm ² (22 AWG) for 4 poles 0,25 mm ² (24 AWG) for 5 and 8 poles
Minimal bending radius:	> cable diameter x 10

Wires configuration of female connector

4 poles		5 poles		8 poles	
Pin	Colour	Pin	Colour	Pin	Colour
1	Brown	1	Brown	1	White
2	White	2	White	2	Brown
3	Blue	3	Blue	3	Green
4	Black	4	Black	4	Yellow
		5	Grey	5	Grey
				6	Pink
				7	Blue
				8	Red

How to order

VF CA4PD3M

Number of poles	Thread type
4 4 poles	M M12x1
5 5 poles	
8 8 poles	
Sheath covering	Cable length (L)
P PVC (standard)	1 1 meter
U PUR	2 2 meters
	3 3 meters (standard)
	4 4 meters
	5 5 meters (standard)
	...
Type of connector	0 10 meters
D straight (standard)	Other length available on request
G elbow	

Items available in stock

VF CA4PD3M
VF CA4PD5M
VF CA4PD0M
VF CA5PD3M
VF CA5PD5M
VF CA5PD0M
VF CA8PD5M
VF CA8PD0M

Attention! Items not available in stock, minimum order quantity 300 pcs.

ATTENTION: always cut off the power supply before disconnecting the connector. The connector is not suitable to open electrical circuits.

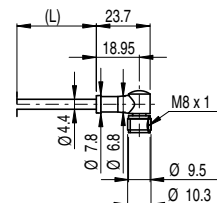
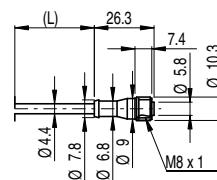
Items with code on the **green** background are available in stock

M8 female wired connectors

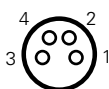
**Technical data:**

Polyurethane connector body
 Class 6 rated copper of the wire according to VDE 0295
 Gold plated contact (resistance < 5 mΩ)
 Self locking ring nut
 High flexibility wire suitable to be used in movable chains,
 with PVC sheath conforming to IEC 60332-3 and CEI 20-22II standards.
 With polyurethane sheath on request.

Max operating voltage: 60 Vac / 75 Vdc
 Max operating current: 4 A
 Protection degree: IP68
 Ambient temperature: from -25°C to +90°C for fixed laying
 from -15°C to +90°C for dynamic lying
 Conductors cross section: 0,25 mm² (24 AWG)
 Minimal bending radius: > cable diameter x 10

**Wires configuration of female connector**

4 poles



Pin	Colour
1	Brown
2	White
3	Blue
4	Black

How to order**VF CA4PD3K****Number of poles****4** 4 poles**Thread type****K** M8x1**Sheath covering****P** PVC (standard)**U** PUR**Type of connector****D** straight (standard)**G** elbow**Cable length (L)**

1 1 meter
2 2 meters
3 3 meters (standard)
4 4 meters
5 5 meters (standard)
 ...
0 10 meters

Other length available on request

Items available in stock

VF CA4PD3K

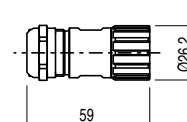
VF CA4PD5K

Attention! Items not available in stock, minimum order quantity 300 pcs

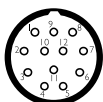
M23 female connectors with 12 poles without cable

**Technical data:**

Housing: metal made, nickel plated
 Max operating voltage: 300 Vac
 Dielectric strength: 2500 Vac for one minute
 Max operating current: 8 A
 Protection degree: IP67 / IP69K
 Ambient temperature: from -40°C to +125°C
 Driving torque: from 1 to 1,5 Nm
 Kind of contact: gold plated (resistance < 3 mΩ)
 Pollution degree: 3
 Connection cycles: > 1000

**Pin configuration of female connector without cable**

12 poles

**How to order****VF CBSM12DS07****Thread type****S** M23x1**Body material****M** metal**Number of poles****12** 12 poles**Cables range****07** from Ø 7 to Ø 12 mm**Pin connection****S** solder connection from 0.34 to 1 mm²**Type of connector****D** straight

Article	Description
VF AC 2205	Nut fastener M23 connector nut fastener, article: VF CBSM12DS07. Needed for opening and wiring the connector.

**Items available in stock**

VF CBSM12DS07

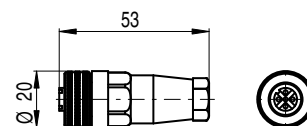
All measures in the drawings are in mm

M12 wireable female connectors



Technical data:

Polymer connector body	
Golden contacts version (8 poles)	
Wire connection screw terminals	
Max operating voltage	250 Vac / 300 Vdc (4-5 poles) 30 Vac / 36 Vdc (8 poles)
Max current	4 A (4-5 poles), 2 A (8 poles)
Protection degree	IP67
Ambient temperature	from -25°C to +90°C
Wires cross section	from 0,25 mm ² (24 AWG) to 0,5 mm ² (20 AWG)



Article	Description	n° poles
VF CBMP4DM04	M12 wireable female connector, straight, for multipolar cables from 4 to 6,5 mm	4
VF CBMP5DM04	M12 wireable female connector, straight, for multipolar cables from 4 to 6,5 mm	5
VF CBMP8DM04	M12 wireable female connector, straight, for multipolar cables from 4 to 7 mm	8

Wiretrap cable glands

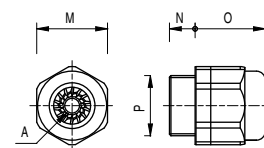
10 pcs packs



The design of this cable gland improves the retention forces of the wires. Each type of cable gland accepts a wider range of cable diameters. Only fit for circular cables.

Technical data:

Body and nut material:	halogen free polymer
Protection degree:	IP67
Driving torque:	from 3 to 4 Nm (PG 13,5/M20) from 2 to 2,5 Nm (PG 11/M16)



	Article	Description	A	Ø _M	N	O	P
Metric threading	VF PAM25C7N	Cable glands M25x1,5 for 1 Ø 10 to Ø 17 mm cable	⊙	30	10	28	M25x1,5
	VF PAM20C6N	Cable glands M20x1,5 for 1 Ø 6 to Ø 12 mm cable	⊙	24	9	24	M20x1,5
	VF PAM20C5N	Cable glands M20x1,5 for 1 Ø 5 to Ø 10 mm cable	⊙	24	9	24	M20x1,5
	VF PAM20C3N	Cable glands M20x1,5 for 1 Ø 3 to Ø 7 mm cable	⊙	24	9	24	M20x1,5
	VF PAM16C5N	Cable glands M16x1,5 for 1 Ø 5 to Ø 10 mm cable	⊙	22	7,5	23	M16x1,5
	VF PAM16C4N	Cable glands M16x1,5 for 1 Ø 4 to Ø 8 mm cable	⊙	22	7,5	23	M16x1,5
	VF PAM16C3N	Cable glands M16x1,5 for 1 Ø 3 to Ø 7 mm cable	⊙	22	7,5	23	M16x1,5
PG threading	VF PAM13C6N	Cable glands PG 13,5 for 1 Ø 6 to Ø 12 mm cable	⊙	24	9	24	PG 13,5
	VF PAM13C5N	Cable glands PG 13,5 for 1 Ø 5 to Ø 10 mm cable	⊙	24	9	24	PG 13,5
	VF PAM13C3N	Cable glands PG 13,5 for 1 Ø 3 to Ø 7 mm cable	⊙	24	9	24	PG 13,5
	VF PAM11C5N	Cable glands PG 11 for 1 Ø 5 to Ø 10 mm cable	⊙	22	7,5	23	PG 11
	VF PAM11C4N	Cable glands PG 11 for 1 Ø 4 to Ø 8 mm cable	⊙	22	7,5	23	PG 11
	VF PAM11C3N	Cable glands PG 11 for 1 Ø 3 to Ø 7 mm cable	⊙	22	7,5	23	PG 11
Metric threading	VF PAM20CBN	Multi-hole cable gland M20x1,5 for 2 cables, Ø 3 to Ø 5 mm	⊙	24	9	23	M20x1,5
	VF PAM20CDN	Multi-hole cable gland M20x1,5 for 3 cables, Ø 1 to Ø 4 mm	⊙	24	9	23	M20x1,5
	VF PAM20CEN	Multi-hole cable gland M20x1,5 for 3 cables, Ø 3 to Ø 5 mm	⊙	24	9	23	M20x1,5
	VF PAM20CFN	Multi-hole cable gland M20x1,5 for 4 cables, Ø 1 to Ø 4 mm	⊙	24	9	23	M20x1,5

Thread adapters

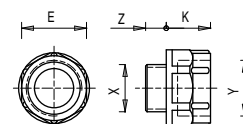
100 pcs packs



With these adapters it is possible to offer to the customers the same product with different threaded cable entries, while only having to stock a single product and many kinds of adapters.

Technical data:

Body material:	glass-reinforced polymer resin
Driving torque:	from 3 to 4 Nm



Article	Description	X	Y	Z	K	Ø _E
VF ADPG13-PG11	Adapter from PG 13,5 to PG 11	PG 13,5	PG 11	9	12	22
VF ADPG13-M20	Adapter from PG 13,5 to M20x1,5	PG 13,5	M20x1,5	9	14	24
VF ADPG13-1/2NPT	Adapter from PG 13,5 to 1/2 NPT	PG 13,5	1/2 NPT	9	14	24
VF ADPG11-1/2NPT	Adapter from PG 11 to 1/2 NPT	PG 11	1/2 NPT	7	14	24
VF ADPG11-PG13	Adapter from PG 11 to PG 13,5	PG 11	PG 13,5	7	14	24
VF ADM20-1/2NPT	Adapter from M20 x 1,5 to 1/2 NPT	M20 x 1,5	1/2 NPT	9	14	24

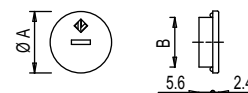
Items with code on the green background are available in stock

Protection plugs

100 pcs packs

**Technical data:**

Body material: halogen free polymer
 Protection degree: IP67
 Driving torque: from 1,2 to 1,6 Nm (PG13,5 / M20)
 from 1 to 1,4 Nm (PG11 / M16)



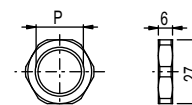
Article	Description	A	B
VF PTM20	Protection plug M20x1,5	25	M20x1,5
VF PTM16	Protection plug M16x1,5	23	M16x1,5
VF PTG13,5	Protection plug PG13,5	25	PG 13,5
VF PTG11	Protection plug PG11	23	PG 11

Plastic threaded nuts

100 pcs packs

**Technical data:**

Body material: glass-reinforced polymer resin
 Driving torque: from 1,2 to 2 Nm



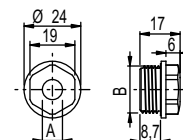
Article	Description	S	CH	P
VF DFPM25	Plastic threaded nut M25x1,5	6	32	M25x1,5
VF DFPM20	Plastic threaded nut M20x1,5	6	27	M20x1,5
VF DFPM16	Plastic threaded nut M16x1,5	5	22	M16x1,5
VF DFPP13	Plastic threaded nut PG13,5	6	27	PG 13,5

Chock plugs

100 pcs packs

**Technical data:**

Body material: halogen free polymer
 Protection degree: IP54
 Driving torque: from 0,8 to 1 Nm



Note: use a socket wrench for tightening.

Article	Description	A	B
VF PFM20C8N	Chock plug for cable from Ø 8 to Ø 12 mm, threaded M20	7,5	M20x1,5
VF PFM20C4N	Chock plug for cable from Ø 4 to Ø 8 mm, threaded M20	3,5	M20x1,5

Safety screws

10 pcs packs



These new screws have tamper-resistant Torx buttonheads. Devices fixed with this kind of screws cannot be removed or tampered by common tools. The safety screws are in stainless steel with different threaded body lengths available: they suit any application where devices are subjected to frequent washing or corroding substances are present.

stances are present.

Article	Description
VF VAM4X15BX-X	M4X15 screw, tamper-resistant Torx T20, AISI 304
VF VAM4X20BX-X	M4X20 screw, tamper-resistant Torx T20, AISI 304
VF VAM4X25BX-X	M4X25 screw, tamper-resistant Torx T20, AISI 304
VF VAM5X10BX-X	M5X10 screw, tamper-resistant Torx T25, AISI 304
VF VAM5X15BX-X	M5X15 screw, tamper-resistant Torx T25, AISI 304
VF VAM5X20BX-X	M5X20 screw, tamper-resistant Torx T25, AISI 304

Safety screws bits

Safety screws bits, ¼" drive.



Article	Description
VF VAIT1T20	Bits for tamper-resistant Torx T20, M4 screw
VF VAIT1T25	Bits for tamper-resistant Torx T25, M5 screw

Metal fixing plates



Metal fixing plate, designed to fix rope switches on ceiling. The plate is provided with many fixing holes suitable for all switches series. It is supplied without screws.

Article	Description
VF SFP2	Fixing plates for ceiling installations

Plastic fixing plates



Fixing plate (complete with fastening screws) provided with long slots for the adjustment of the actuating point.

Every plate has a double couple of fixing holes, one for standard switches and the other one for switches with reset device. In this way the actuator will always have the same actuating point.

Article	Description
VF SFP1	Fixing plate (FR series)
VF SFP3	Fixing plate (FX series)

Light indicators

5 pcs packs

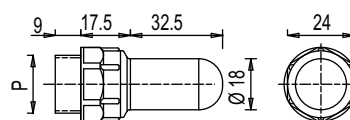


These light indicators are used for visualizing a change of the state of an electric contact inside the switch. They can be installed only on series FL, FX, FZ, FW, FG or FS by screwing them on one of the conduit entries not used for electric cables, and they can have many different functions: for example, combined with a rope switch (e.g. FL 1878) they can indicate (also in the distance) if the switch has been actuated. Otherwise, combined with safety switches with separate actuator (e.g. FL 693), they can indicate if the protection is closed correctly or not.

Combined with a safety switch with solenoid (FS or FG series), they can indicate if the protection is locked or unlocked. Combined with any switch of FL, FX, or FZ series they can be used to calibrate the actuator. The light indicators are decomposable in two parts for bulb replacement without removing the lamp holder from the switch, and their inner part can rotate in such a way that it can be wired and screwed on the switch without any risk of kinking the wires.

Technical data:

Max operating voltage U_i :	250 Vac/dc
Rated impulse withstand voltage (U_{imp}):	4 kV
Max lamp power:	3 W
Protection degree:	IP67
Lamp coupling:	BA9
Cable cross section:	min. 0,5 mm ² max 1,5 mm ²
Ambient temperature:	from -25°C to +40°C
Driving torque:	from 3 to 4 Nm



How to order

VF ILI024GP

Kind of lamp	Threaded coupling
I incandescence	P PG 13,5
X without lamp	M M20 x 1,5
Supply voltage	Lamp cover colour
024 24 Vac/dc ±10%	G Yellow
110 110 Vac/dc ±10%	R Red
220 220 Vac/dc ±10%	V Green
000 without lamp	W White

Items available in stock

VF ILI024GP
VF ILI024RP
VF ILI024VP
VF ILX000GP
VF ILX000RP
VF ILX000VP

Items with code on the **green** background are available in stock