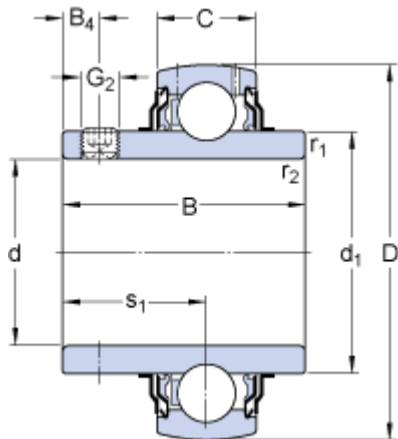


YAR 208 - 2 F

Dimensions



d	40	mm
D	80	mm
B	49.2	mm
C	21	mm
d ₁	≈ 51.8	mm
B ₄	8	mm
r _{1,2}	min. 1	mm
s ₁	30.2	mm

Calculation data

Basic dynamic load rating	C	30.7	kN
Basic static load rating	C ₀	19	kN
Fatigue load limit	P _u	0.8	kN
Limiting speed ¹⁾		4800	r/min
Calculation factor	f ₀	14	

Mass

Mass complete bearing	0.6	kg
-----------------------	------------	----

Mounting information

Thread grub screw	G ₂	M 8 x 1
Hexagonal key size for grub screw	N	4 mm
Recommended tightening torque for grub screw		6.5 N·m

Associated products

Rubber seating ring	RIS 208 A
---------------------	------------------

