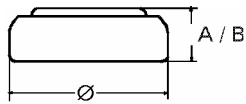


Data Sheet

Type Number 20399
Designation IEC SR 57
System Silver oxide / Zinc /
KOH - Electrolyte



Nominal Voltage 1,55 V
Typical Capacity C 42 mAh
Load 13 kOhm, at 20°C down to 1.2 V

Weight (approx.) 0,75 g
Volume 0,17 ccm
Coding..... Date of Manufacturing
Month / Year

Temperature Ranges
Storage min max.
-10°C 65°C
Discharge -10°C 65°C

Dimensions
Diameter (Ø) min max.
9,15 9,5
Height (A/B) 2,4 2,7

Segment Watch / High Drain

Main Applications Watch
Photo
Electronic

Typical Capacities (at 20°C)

Discharge Type	Load	End Voltage: 1.2 V	
Continuous	13000 Ω	Time:	375 h
24h/d, 7d/w		Capacity [mAh]:	42
Current [µA]:	120	Energy [mWh]:	67