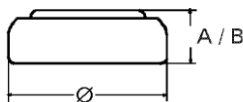


Data Sheet

Type Number 20350
Designation IEC SR 42
System Silver oxide / Zinc /
 KOH - Electrolyte



Nominal Voltage 1,55 V
Typical Capacity C 110 mAh
 Load 5,6 kOhm, at 20°C down to 1.2 V

Weight (approx.) 1,49 g
Volume 0,33 ccm
Coding..... Date of Manufacturing
 Month / Year

Temperature Ranges min max.
 Storage -10°C 65°C
 Discharge -10°C 65°C

Dimensions min max.
 Diameter (Ø)..... 11,25 11,6
 Height (A/B) 3,3 3,6

Segment Watch / High Drain

Main Applications Watch
 Photo
 Electronic

Typical Capacities (at 20°C)

Discharge Type	Load	End Voltage:	1.2 V
Continuous	5600 Ω	Time:	405 h
24h/d,7d/w		Capacity [mAh]:	110
Current [μA]:	275	Energy [mWh]:	172