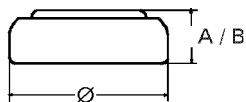


Data Sheet

Type Number 339
Designation IEC SR 614
System Silver oxide / Zinc /
 Alkaline - Electrolyte



Nominal Voltage 1,55 V
Typical Capacity C 11 mAh
 Load 100 kOhm, at 20°C down to 1.2 V

Weight (approx.) 0,21 g
Volume 0,04 ccm
Coding..... Date of Manufacturing
 Month/Year

Temperature Ranges min max.
 Storage 0°C 55°C
 Discharge 0°C 55°C

Dimensions min max.
 Diameter (Ø)..... 6,65 6,8
 Height (A/B) 1,3 1,45

Segment Watch

Main Applications Watch
 Photo
 Electronic

Typical Capacities (at 20°C)

Discharge Type	Load	End Voltage:	1.2 V
Continuous	100000 Ω	Time:	700 h
24h/d,7d/w		Capacity [mAh]:	11
Current [µA]:	15,6	Energy [mWh]:	17

All Data contained herein is for single cells

For battery applications, performance data may vary from single cell data, depending on specific battery configuration

VARTA Microbattery GmbH, Daimlerstr. 1, D-73479 Ellwangen/Jagst
 Tel.: (+49) 7961/921-0, Telefax: (+49) 7961/921-553

Subject to change without prior notice!
 Date of issue: 2010-01-19