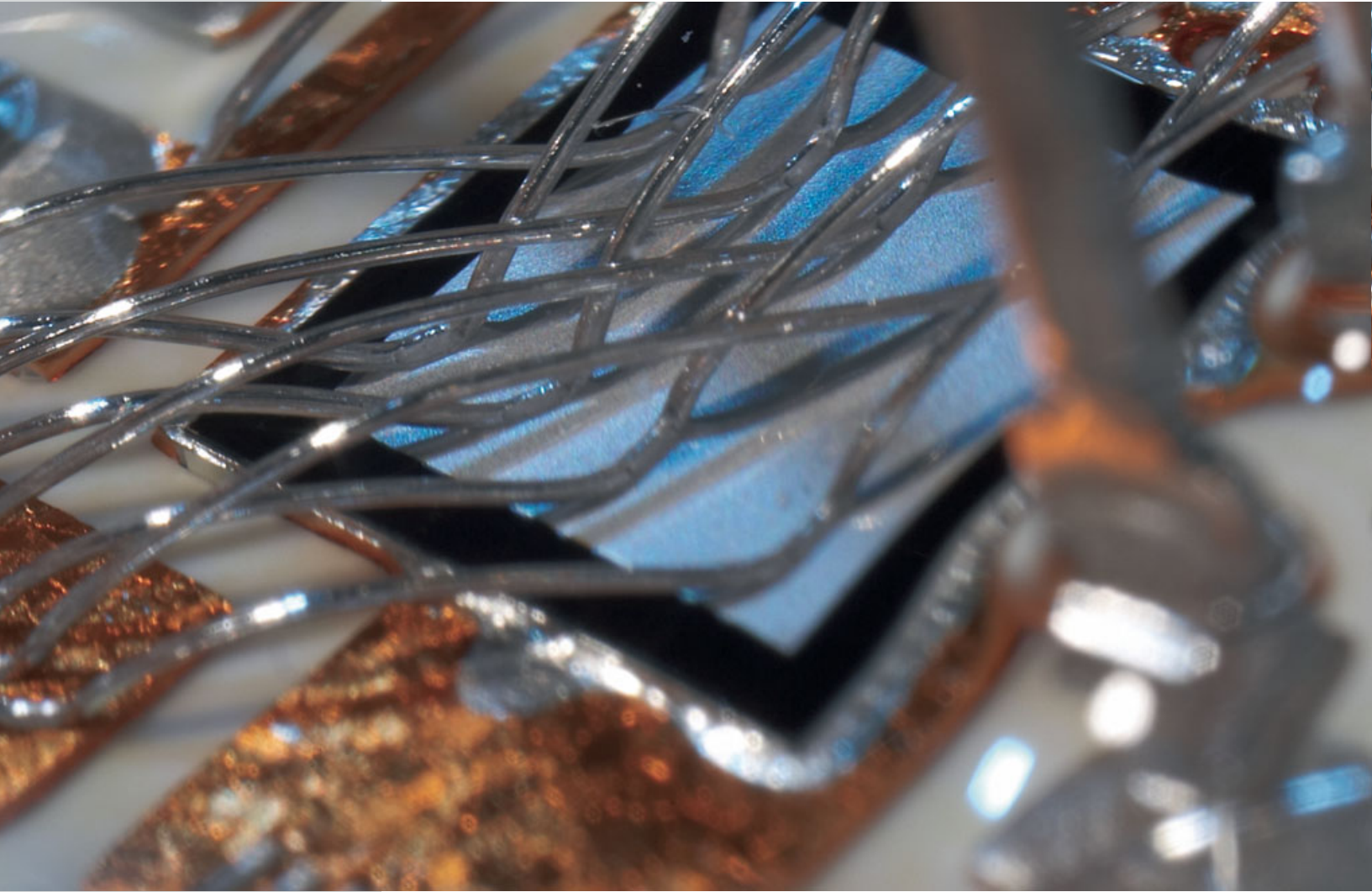


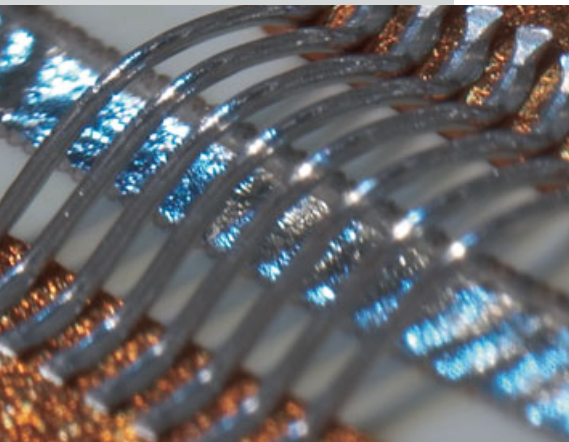


power.position.service



Power Modules

Fast Power Module Solutions



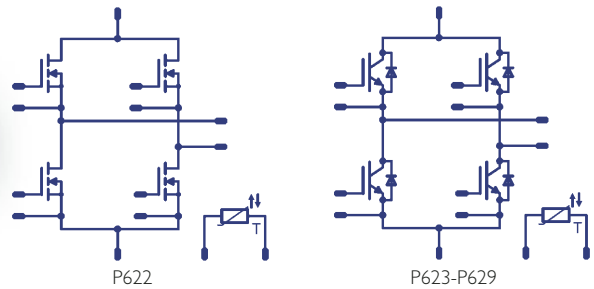
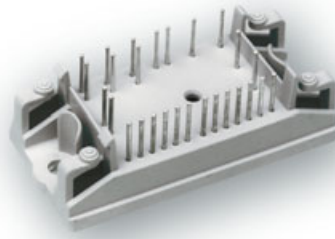
Vincotech is one of the market leaders in Power Modules. Target applications include motor drives, power supplies and welding equipment. With 13 different standard housings and more than 35 standard product families, Vincotech offers a wide power range using different topologies.

The products include Power Integrated Modules (combination of input rectifier, six pack inverter and brake chopper), Six Pack Modules, PFC-, H-Bridge and Half-Bridge Modules. Vincotech covers a broad power spectrum, ranging from 5A to 450A at 600V and 1200V.

Vincotech Fast Power Modules are available in 2 different standard housings for up to 100A at 600V and 1200V and are suitable for switching frequencies of up to 400kHz at 600V and 50kHz at 1200V.

fastPACK 0 H 2nd gen

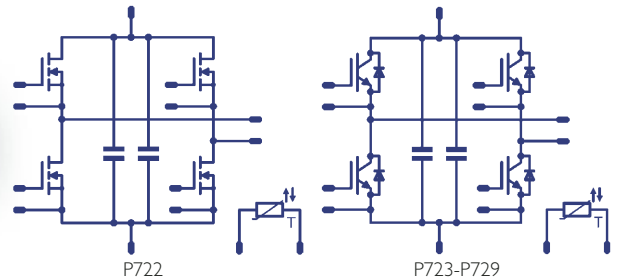
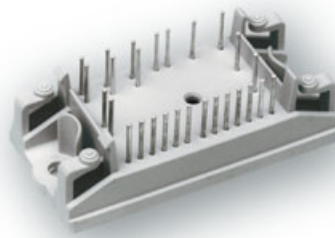
- Ultra low inductive design
- Ultra fast switching frequency
- Clip-in PCB mounting



Part-No	Voltage	Current*	Frequency
V23990-P622-F64-PM	600V	30A	400kHz
V23990-P622-F74-PM ¹⁾	600V	30A	400kHz
V23990-P623-F-PM ²⁾	600V	60A	250kHz
V23990-P623-F04-PM	600V	60A	250kHz
V23990-P623-F10-PM ^{1) 2)}	600V	60A	250kHz
V23990-P623-F14-PM ¹⁾	600V	60A	250kHz
V23990-P623-F24-PM	600V	50A	30kHz
V23990-P624-F24-PM	600V	75A	30kHz
V23990-P625-F24-PM	600V	100A	30kHz
V23990-P629-F44-PM	1200V	25A	50kHz
V23990-P629-F46-PM ³⁾	1200V	25A	50kHz
V23990-P629-F54-PM ¹⁾	1200V	25A	50kHz
V23990-P629-F56-PM ^{1) 3)}	1200V	25A	50kHz

flowPIM 0 H 2nd gen with capacitor

- Integrated capacitor
- Ultra low inductive design
- Ultra fast switching frequency
- Clip-in PCB mounting



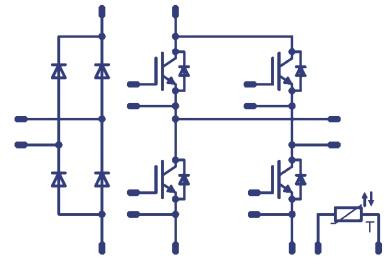
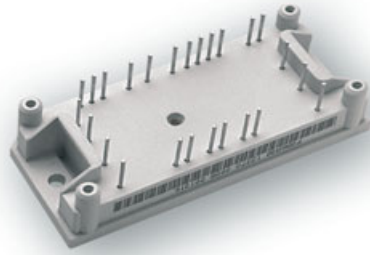
Part-No	Voltage	Current*	Frequency
V23990-P722-F64-PM	600V	30A	400kHz
V23990-P722-F74-PM ¹⁾	600V	30A	400kHz
V23990-P723-F-PM ²⁾	600V	60A	250kHz
V23990-P723-F04-PM	600V	60A	250kHz
V23990-P723-F10-PM ^{1) 2)}	600V	60A	250kHz
V23990-P723-F14-PM ¹⁾	600V	60A	250kHz
V23990-P729-F44-PM	1200V	25A	50kHz
V23990-P729-F46-PM ³⁾	1200V	25A	50kHz
V23990-P729-F54-PM ¹⁾	1200V	25A	50kHz
V23990-P729-F56-PM ^{1) 3)}	1200V	25A	50kHz

1) High performance version with improved Rth
 2) Without NTC
 3) With hyperfast diodes
 4) Standard rectifier
 5) Without brake

* Rated current of components

fastPIM I H

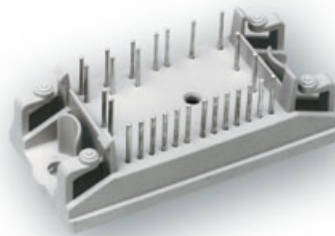
- Ultra fast switching frequency
- Ultra low inductive design



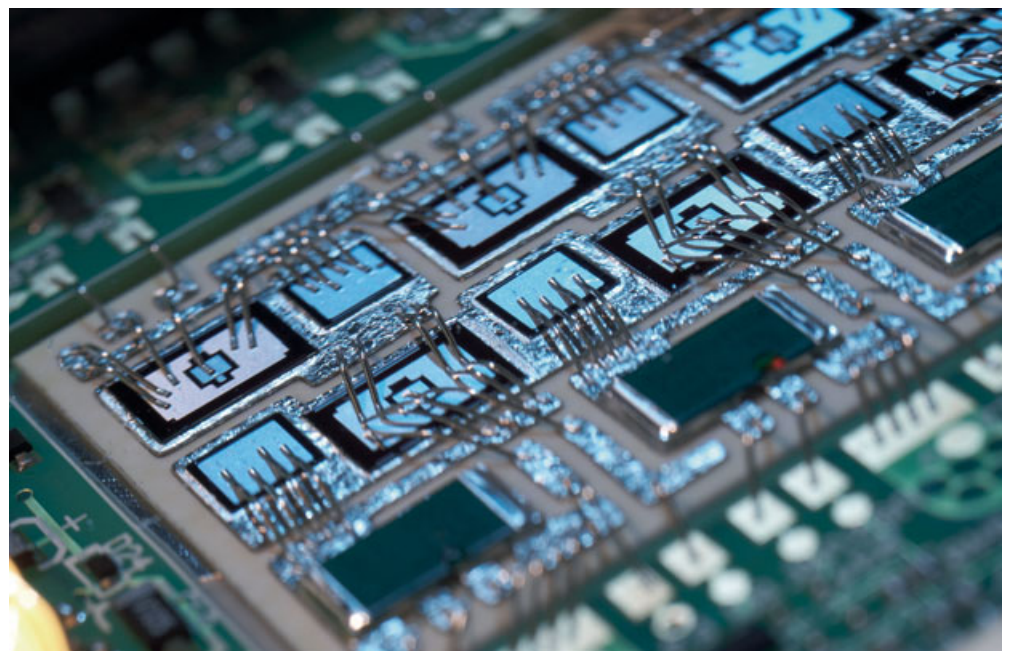
Part-No	Voltage	Current*
V23990-P381-A-PM	600V	12A
V23990-P382-A-PM	600V	20A
V23990-P380-A-PM	600V	30A
V23990-P385-A11-PM ¹⁾	600V	20A
V23990-P386-A11-PM ¹⁾	600V	30A
V23990-P387-A11-PM ¹⁾	600V	40A

fastPHASE 0

- Up to 50kHz switching frequency
- Low inductive design
- Clip-in PCB mounting

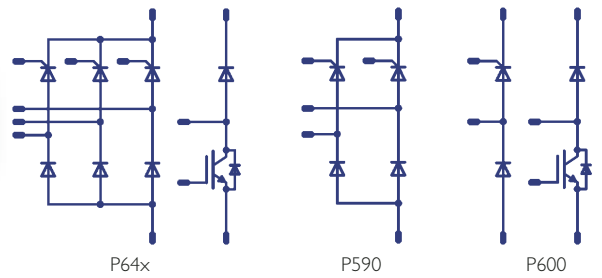


Part-No	Voltage	Current*	Frequency
V23990-P569-F20-PM ¹⁾	1200V	100A	25kHz/50kHz (ZVS)
V23990-P569-F21-PM ^{1) 3)}	1200V	100A	25kHz/50kHz (ZVS)
V23990-P569-F30-PM	1200V	100A	25kHz/50kHz (ZVS)
V23990-P569-F31-PM ³⁾	1200V	100A	25kHz/50kHz (ZVS)
V23990-P569-F40-PM ¹⁾	1200V	100A	80kHz (ZVS)
V23990-P569-F50-PM	1200V	100A	80kHz (ZVS)

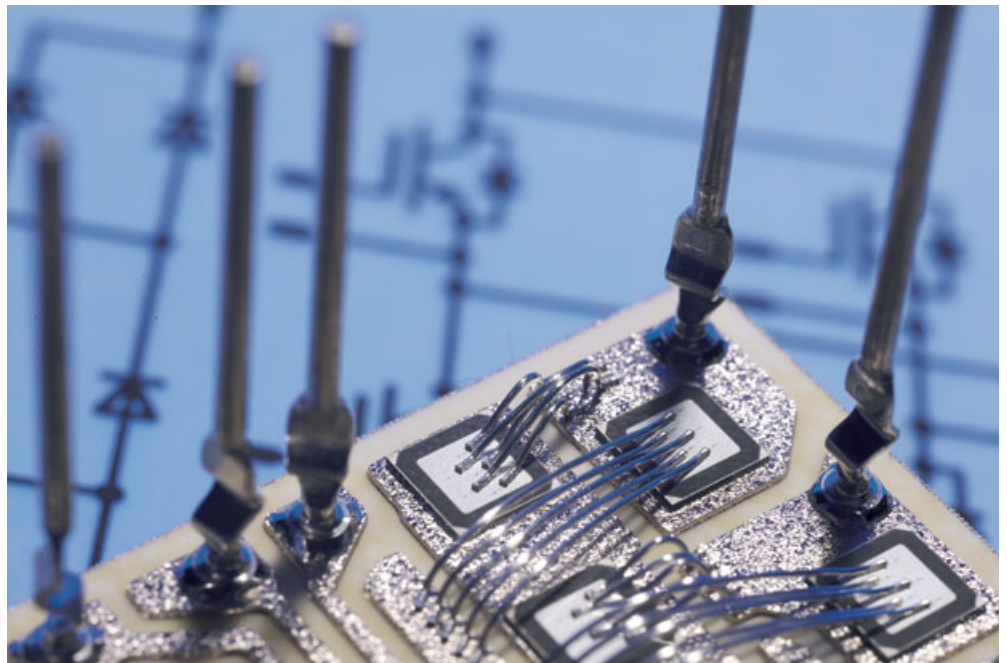


flowCON 0

- Modular input rectifier optionally half controlled
- Compatible with *flow*PHASE 0, *flow*PACK 0/1/2, *fast*PHASE 0 and *fast*PACK 0
- Clip-in PCB mounting

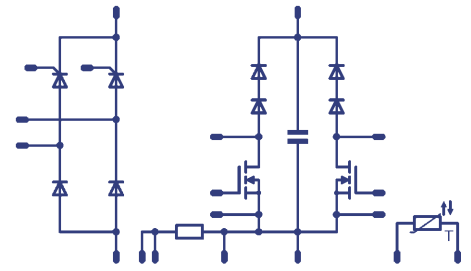
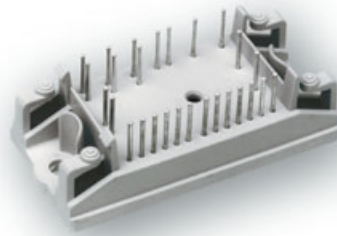


Part-No	Voltage	Current*
V23990-P649-G-PM ⁴⁾	1600V	50A
V23990-P649-G10-PM	1600V	50A
V23990-P649-H-PM ^{4) 5)}	1600V	50A
V23990-P649-H10-PM ⁵⁾	1600V	50A
V23990-P640-G-PM ⁴⁾	1600V	75A
V23990-P640-G10-PM	1600V	75A
V23990-P640-H-PM ^{4) 5)}	1600V	75A
V23990-P640-H10-PM ⁴⁾	1600V	75A
V23990-P590-J09-PM	1600V	105A
V23990-P590-J19-PM	1600V	78A
V23990-P600-I09-PM	1600V	105A
V23990-P600-I19-PM	1600V	78A



flowPFC 0

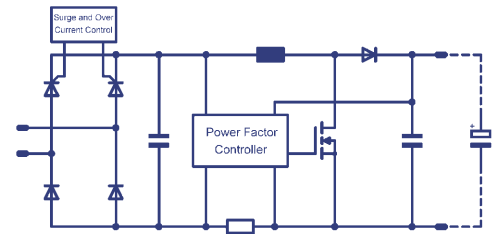
- High power, high efficiency PFC circuit
- Up to 400kHz switching frequency
- MOSFET and IGBT designs
- Integrated high frequency capacitor



Part-No	Voltage	Power (50kHz)	Power (400kHz)	Special Features
V23990-P802-D30-PM	500V	4.0kW	1.6kW	CoolMOS™ + Tandem Diode
V23990-P802-D40-PM	500V	4.0kW	1.6kW	CoolMOS™ + Tandem Diode half controlled rectifier
V23990-P803-D30-PM	500V	8.0kW	3.2kW	CoolMOS™ + Tandem Diode
V23990-P803-D40-PM	500V	8.0kW	3.2kW	CoolMOS™ + Tandem Diode half controlled rectifier
V23990-P804-D30-PM	600V	8.0kW		Highspeed IGBT + Tandem Diode Improved performance
V23990-P804-D31-PM	600V	8.0kW		Highspeed IGBT + Tandem Diode
V23990-P804-D41-PM	600V	8.0kW		Highspeed IGBT + Tandem Diode half controlled rectifier
V23990-P800-D30-PM	500V	7.8kW	4.9kW	CoolMOS™ + SiC Diode
V23990-P800-D40-PM	500V	7.8kW	4.9kW	CoolMOS™ + SiC Diode half controlled rectifier

PFC-IPM

- Evaluation tool for flowPFC 0
- Ultra low profile
- High power density
- 200kHz switching frequency



Part-No	Input Voltage	Power
V23990-P411-D-PM	230V	1kW



Housing Dimensions

	flow 0	height*: 17 mm length: 66 mm width: 33 mm		flyer IPM	height*: 19 mm length: 99 mm width: 97 mm
	flow 0 12 mm	height*: 12 mm length: 66 mm width: 33 mm		PFC-IPM	height*: 25 mm length: 79 mm width: 69 mm
	flow 1	height*: 17 mm length: 82 mm width: 38 mm		flat 1	height*: 13 mm length: 70 mm width: 41 mm
	flow 2	height*: 17 mm length: 108 mm width: 47 mm		MiniSKiiP® 1	height*: 16 mm length: 42 mm width: 40 mm
	flow90 1	height*: 28 mm length: 84 mm width: 21 mm		MiniSKiiP® 2	height*: 16 mm length: 59 mm width: 52 mm
	flowSCREW 2	height*: 17 mm length: 117 mm width: 64 mm		MiniSKiiP® 3	height*: 16 mm length: 82 mm width: 59 mm
	flowSCREW 3	height*: 17 mm length: 150 mm width: 64 mm	* Height implies installation height		

Vincotech is a worldwide leading company in the development and manufacturing of passive and active electronic components. In 1996 the decision was made to step into the future-oriented Power Module market. The responsibility for this product group is based in Ottobrunn, Germany. A dedicated team continuously develops new state of the art technologies, which are turned into standard and customized products. All Power Module products are developed and manufactured in our ISO9001 and TSI6949 certified factory in Hungary. Our modules conform to the RoHS standard and are 100% electrically and functionally tested prior to packaging. This way we constantly guarantee high quality products.

Vincotech, your reliable partner!

The information provided herein is believed to be reliable at press time. Vincotech assumes no responsibility for inaccuracies or omissions. Vincotech assumes no responsibility for the use of this information, and all such information shall be entirely at the users own risk. Prices and specifications are subject to change without notice. Vincotech does not authorize or warrant any of its products for use in life-support devices and / or systems.

Vincotech is a trademark. flowPIM is a trademark of Vincotech GmbH.
SEMIKRON is a trademark. MiniSKiiP is a trademark of SEMIKRON Elektronik GmbH & Co. KG.
COOLMOS is a trademark of Infineon Technologies AG.



Headquarters EMEA:
Vincotech GmbH
c/o Tyco Electronics
Finsinger Feld 1
85521 Ottobrunn, Germany
Tel.: +49 (0)89 6089-830
Fax: +49 (0)89 6089-833

www.vincotech.com