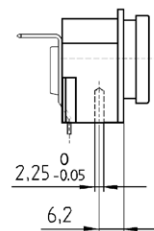
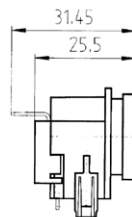
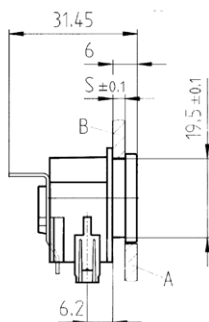
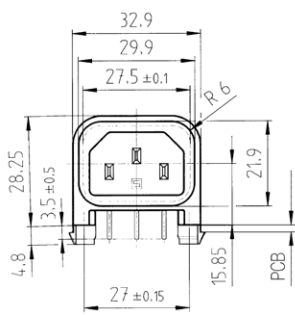
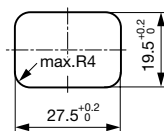
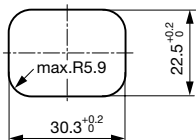


Snap-in mounting



with insulation cover

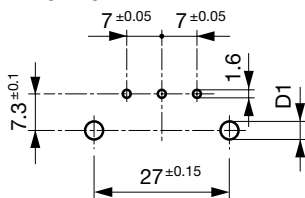


Rear panel mounting

Sandwich mounting

Drilling diagrams

Drilling diagram



d1 = 6 ± 0.05 for Snap-in mounting
 d1 = 3.6 ± 0.05 for screw-on mounting
 with self-tapping screws
 3 mm (EJOT-PT), 2 screws enclosed

Variants

Protection Class	Panel mounting	Panel Thickness s [mm]	Ground terminal 4.8 x 0.8 mm	Cover	Order Number
1	Screw	1	angled to pin axis		GSP2.9103.11
1	Screw	1.5	angled to pin axis		GSP2.9103.13
1	Screw	2	angled to pin axis		GSP2.9103.14
1	Screw	2.5	angled to pin axis		GSP2.9103.15
1	Screw	3	angled to pin axis		GSP2.9103.16
1	Screw	1.5	angled to pin axis	●	GSP2.9113.13
1	Screw	2	angled to pin axis	●	GSP2.9113.14
1	Screw	2.5	angled to pin axis	●	GSP2.9113.15
1	Screw	3	angled to pin axis	●	GSP2.9113.16
1	Snap-in	1	angled to pin axis		GSP2.9203.11
1	Snap-in	1.2	angled to pin axis		GSP2.9203.12
1	Snap-in	1.5	angled to pin axis		GSP2.9203.13
1	Snap-in	2	angled to pin axis		GSP2.9203.14
1	Snap-in	2.5	angled to pin axis		GSP2.9203.15
1	Snap-in	2.5	angled to pin axis		GSP2.9213.15

Protection Class	Panel mounting	Panel Thickness s [mm]	Ground terminal 4.8 x 0.8 mm	Cover	Order Number
1	Snap-in	3	angled to pin axis		GSP2.9203.16
1	Snap-in	1.5	angled to pin axis	●	GSP2.9213.13
1	Snap-in	2	angled to pin axis	●	GSP2.9213.14
1	Snap-in	3	angled to pin axis	●	GSP2.9213.16
2	Screw	1.5	straight		GSP2.9100.13
2	Screw	3	straight		GSP2.9100.16
2	Screw	2	straight	●	GSP2.9110.14
2	Screw	2.5	straight	●	GSP2.9110.15
2	Snap-in	1.5	straight		GSP2.9200.13
2	Snap-in	2.5	straight		GSP2.9200.15
2	Snap-in	1.5	straight	●	GSP2.9210.13
2	Snap-in	2	straight	●	GSP2.9210.14
2	Snap-in	2.5	straight	●	GSP2.9210.15
2	Snap-in	3	straight	●	GSP2.9210.16

Additional version on request, e.g.: Ground terminal straight or quick-connect terminal 6,3 x 0,8 mm

".21" corresponds to the version with V-Lock mating cordset. The connector is equipped with a notch intended for use with the latching cordset. The cord latching system prevents against accidental removal of the cordset.

Packaging unit 50 Pcs

Mating Outlets/Connectors

Category / Description

Connector Overview complete



IEC Connector C15, Rewireable, Straight	0101
IEC Connector C15A, Rewireable, Straight	0102
IEC Connector C15A, Rewireable, Straight	0102-G
IEC Connector C15A, Rewireable, Angled	0112
IEC Connector C13, Rewireable, Angled	4012

Connector further types to GSP2

...

Power Cord Overview complete



Power Cord with IEC Connector C13, Angled	0311
Power Cord with IEC Connector C13, Angled	3011
Power Cord with IEC Connector C13, Angled	3012
Power Cord with IEC Connector C13, Angled	3013
Power Cord with IEC Connector C13	3020

Power Cord further types to GSP2

...

Power Supply or Interconnection Cord Overview complete



Divers Power Supply and Interconnection Cords 10 A	6000.0214
Divers Power Supply and Interconnection Cords 10 A	6000.0224
Divers Power Supply and Interconnection Cords 10 A	6003.0204
Divers Power Supply and Interconnection Cords 10 A	6003.0205
Divers Power Supply and Interconnection Cords 10 A	6003.0215

Power Supply or Interconnection Cord further types to GSP2

...