

AC Filter 2-Stage, Very High Symmetrical and Asymmetrical Attenuation



Description

- Line-filter in standard version
- 2 positions
- high attenuation

Approvals

- VDE Certificate Number: 40019274
- UL File Number: E72928

Characteristics

- Designed for increased requirements
- 2-stage line filter with increased attenuation
- Protection against interference voltage from the mains
- Especially designed for industrial applications such as: Frequency Converters, Stepper Motor Drives, UPS-Systems, Inverters
- Especially suitable for use in switching power supplies
- Suitable for use in equipment according to IEC/UL 60950

References

Alternative: Standard version

Weblinks

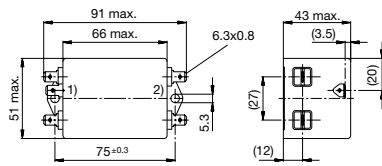
[pdf-datasheet](#), [html-datasheet](#), [General Product Information](#), [Approvals](#), [CE declaration of conformity](#), [RoHS](#), [CHINA-RoHS](#), [REACH](#), [Distributor-Stock-Check](#), [Detailed request for product](#)

Technical Data

Ratings IEC	3 - 36A @ Ta 40 °C / 250 VAC; 50Hz	Line Filter	Standard and Industrial Version, IEC 60939, UL 1283, CSA C22.2 no. 8
Ratings UL/CSA	3 - 36A @ Ta 40 °C / 125 VAC; 60Hz		Technical Details
Leakage Current	standard < 0.5 mA (250V / 60Hz)	MTBF	> 200'000h acc. to MIL-HB-217 F
Dielectric Strength	> 1.7 kVDC between L-N > 2.7 kVDC between L/N-PE Test voltage (2 sec)		
Allowable Operation Temp.	-25 °C to 100 °C		
Climatic Category	25/100/21 acc. to IEC 60068-1		
Protection Class	Suitable for appliances with protection class I acc. to IEC 61140		
Terminal	Quick connect terminals 6.3 x 0.8 mm or screw terminals Current >24 A requires screw terminals		
Material: Housing	Alu. anodised / Stainless Steel		

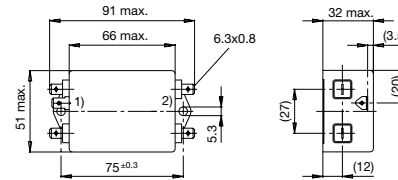
Dimension

Case 48

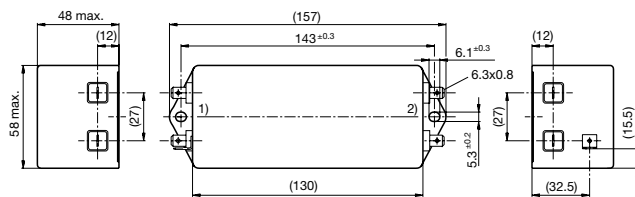


- 1) Line
 - 2) Load
- Case FF with quick connect terminals

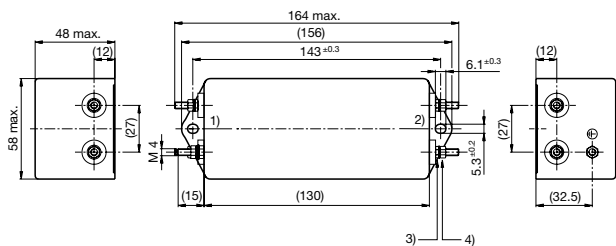
Case 49



- 1) Line
 - 2) Load
- Case FF with screw terminals



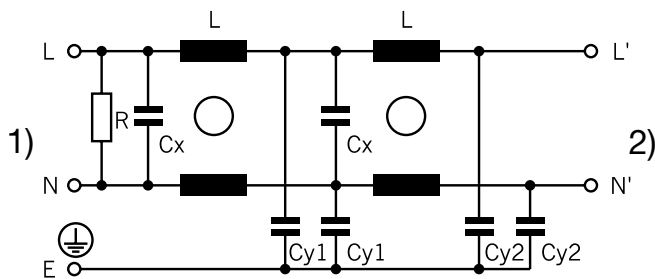
- 1) Line
- 2) Load



- 1) Line
- 2) Load
- 3) Lock-nut do not unscrew
- 4) Nut torque 0.85...1 Nm, keep lock-nut fastened

Diagrams

Standard version



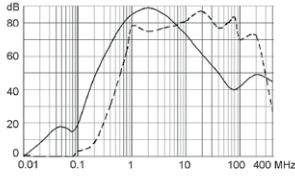
- 1) Line
- 2) Load

Attenuation Loss

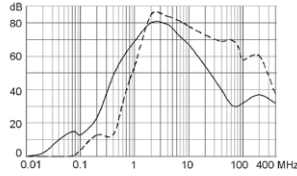
----- 50Ω differential mode _____ 50Ω common mode

Standard version

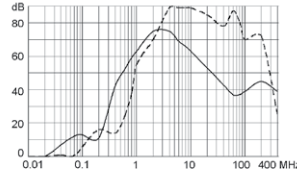
3 A



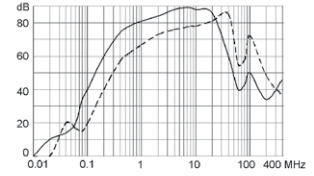
6 A



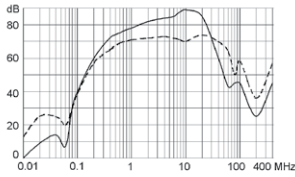
10 A



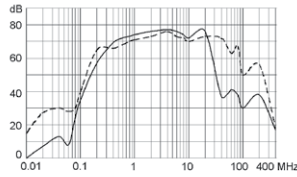
16 A



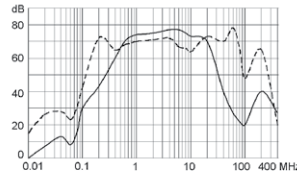
20 A



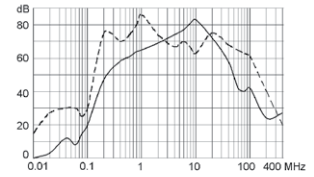
24 A



25 A

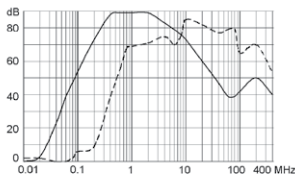


36 A

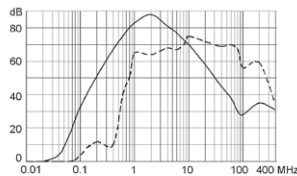


Industrial version

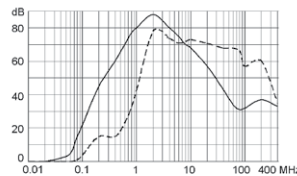
3 A



6 A



10 A



All Variants

Rated Current [A]	Filter-Type	Leakage Current [mA]	Terminal	L [mH]	Cx [µF]	Cy1 [nF]	Cy2 [nF]	R [MΩ]	Weight [g]	Housings	Packaging [PCS]	Order Number
3	Standard Version	0.25	Quick connect terminals	2 x 2	0.1	1.5	1	1	157 g	49	10	5500.2058
6	Standard Version	0.25	Quick connect terminals	2 x 0.8	0.1	1.5	1	1	159 g	49	10	5500.2060
10	Standard Version	0.25	Quick connect terminals	2 x 0.4	0.1	1.5	1	1	159 g	49	10	5500.2062
16	Standard Version	0.5	Quick connect terminals	2 x 1.3	1	-	4.7	1	200 g	48	10	5500.2218
20	Standard Version	0.5	Quick connect terminals	2 x 2.4	2.2	-	4.7	1	840 g	FF	4	5500.2219
24	Standard Version	0.5	Quick connect terminals	2 x 2	2.2	-	4.7	1	910 g	FF	4	5500.2220
25	Standard Version	0.5	Bolts and nuts M4	2 x 2	2.2	-	4.7	1	910 g	FF	4	5500.2221
36	Standard Version	0.5	Bolts and nuts M4	2 x 1.23	2.2	-	4.7	1	910 g	FF	4	5500.2222
3	Industrial Version	2.5	Quick connect terminals	2 x 2	0.1	22	1	1	157 g	49	10	5500.2059
6	Industrial Version	2.5	Quick connect terminals	2 x 0.8	0.1	22	1	1	159 g	49	10	5500.2061
10	Industrial Version	2.5	Quick connect terminals	2 x 0.4	0.1	22	1	1	159 g	49	10	5500.2063

Most Popular.

Availability for all products can be searched real-time: <http://www.schurter.com/Stock-Check/Stock-Check-SCHURTER>