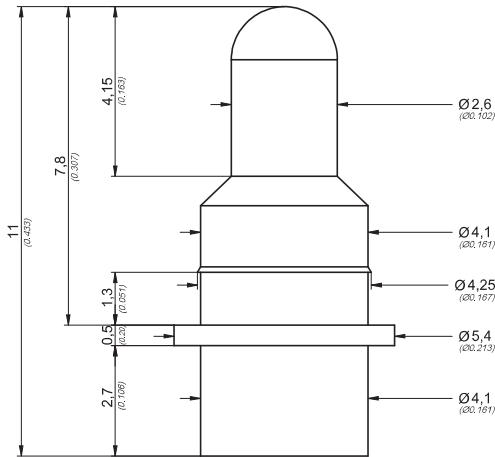


Lade- und Batteriekontakt TK 0064 B
Battery and Interface Probe



Tech. Spezifikationen *Tech. Specifications:*

Max. Federweg <i>Max. Travel</i>	3,4 mm 0.134 inch
Arbeitshub <i>Working Stroke</i>	2,75 mm 0.108 inch
Nennstrom <i>Current Rating</i>	3 A
Mittlerer Durchgangswiderstand <i>Average Resistance</i>	$R_m = 25 \text{ m}\Omega$
Standardabweichung <i>Standard Deviation</i>	$s = 4 \text{ m}\Omega$

Werkstoffe *Materials:*

Führungshülse <i>Probe Barrel</i>	Messing vergoldet <i>Brass gold plated</i>
Feder <i>Spring</i>	Stahl vergoldet <i>Steel gold plated</i>
Kolben (Kopf) <i>Plunger (Head)</i>	Messing (M) vergoldet (A) <i>Brass (M) gold plated (A)</i>

Serie *Series* **TK 0064 B**

Kopfform <i>Head type</i>	Nr. <i>No.</i>
	J
Tastkopf Ø mm <i>Probe tip Ø inch</i>	2,60 0.102
Werkstoff <i>Material</i>	M
Federkraft <i>Spring force</i> in cN	Standard 57 cN 115 cN Standard 2.0 oz. 4.0 Oz. +/- 20%
Oberfläche Tastkopf <i>Surface Probe Tip</i>	A

Bestellbeispiel:
Ordering Example:

Federkontaktstift
Spring Contact Probe

TK0064B.	J.	2,60.	M.	57.	A
<small>Serie Series</small>	<small>Kopfform Headtype</small>	<small>Tastkopf Probe tip</small>	<small>Werkstoff Material</small>	<small>Federkraft Springforce</small>	<small>Oberfläche Surface</small>

TK0064B.J.2,60.M.57.A