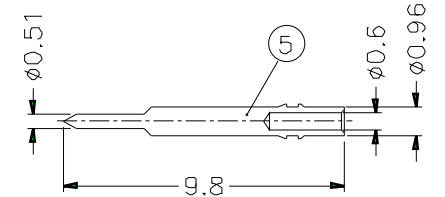
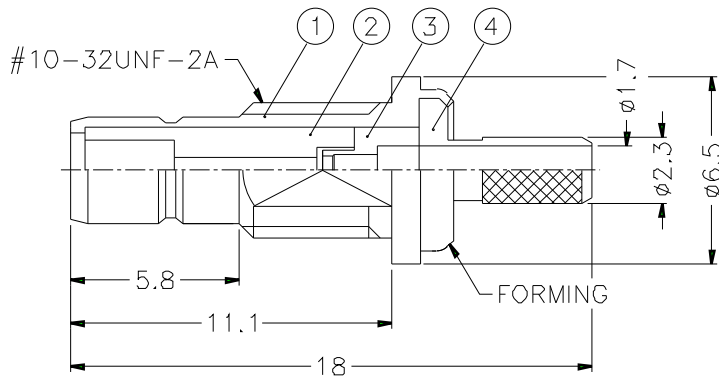
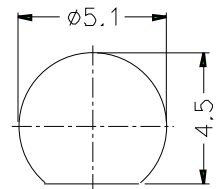
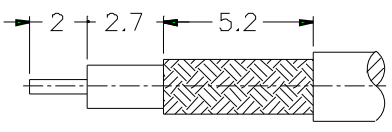
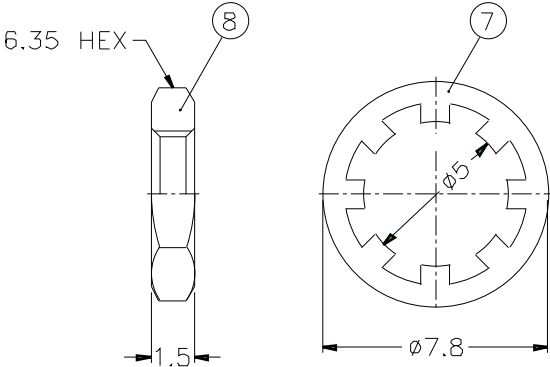


REVISIONS			
ISS	ZONE	DESCRIPTION\PER REQUEST\DATE	



1. CRIMPED FERRULE
HEX CRIMP SIZE .128"
2. CRIMPED CONTACT PIN
SQ. CRIMP SIZE (0.7)mm
3. MAX. PANEL THICKNESS=2.4mm

NOTES: FINISH (PLATING THICKNESS IN MICRO-INCHES)

1. BRASS PER QQ-B-626
2. BRASS PER QQ-B-613
3. GOLD PL. 3 MIN. THICK OVER NICKEL PL. 100 MIN. THICK OVER COPPER STRIKE
4. GOLD PL. 30 MIN. THICK OVER NICKEL PL. 100 MIN. THICK OVER COPPER STRIKE
5. TEFLON MIL-P-19468

9	HEAT SHRINK TUBING			1	HT-56/5X193
8	HEX NUT	NOTE 1	NOTE 3	1	HN635-10-32X15
7	LOCK WASHER	NOTE 2	NOTE 3	1	LW-78/5X05
6	FERRULE	COPPER	NOTE 3	1	FR-38/3X7C
5	CONTACT PIN	NOTE 1	NOTE 4	1	SMB1421A1-5-096/06
4	BARREL	NOTE 1	NOTE 3	1	SMB6121A1-4-23/17-C
3	INSULATOR	NOTE 5	NATURAL	1	SMB6121B2-3T-50
2	INSULATOR	NOTE 5	NATURAL	1	SMB1421A1-2T-50
1	BODY	NOTE 1	NOTE 3	1	SMB1421A1-1-B
NO.	DESCRIPTION	MATERIAL	FINISH	Q'TY	DRAWING NO.

DIMENSIONS ARE IN MILLIMETERS		
UNLESS OTHERWISE SPECIFIED TOLERANCES		
0.5-6	= ±0.2	
6-30	= ±0.4	
30-120	= ±0.6	
120-315	= ±1	
315-1000	= ±1.6	
1000-2000	= ±2.4	
PART NO.	SMB1421A1-3GT30G-5-50	
APPROVED	DATE 10-11-01'	
CHECKED	DATE 10-11-01'	
DRAWN	DATE 10-11-01'	
SCALE	4/1	ISSUE A
FILE NO		

Amphenol	
TITLE SMB BULKHEAD CRIMP JACK (FOR RG-174/U,188A/U,316/U)	
DRAWING NO. KJ-SMB1421A1-3GT30G-316U-50	
ITEM NO.	