

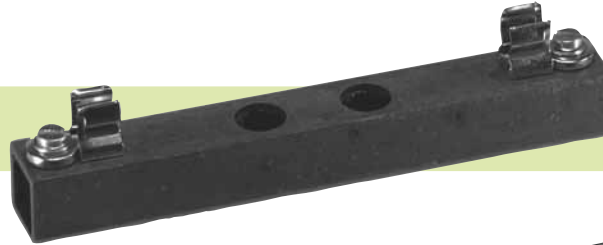
Type  
**7103401**

75 mm



Type  
**7103701**

110 mm



Type  
**7104001**

145 mm



Type  
**7104301**

175 mm



7103401  
7103701  
7104001  
7104301

**G-Sicherungshalter offene Bauart für Hochspannungs-G-Sicherungseinsätze / Fuse-Holders open type for High-Voltage miniature Fuse-Links**

Montage / mounting

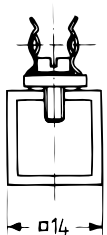
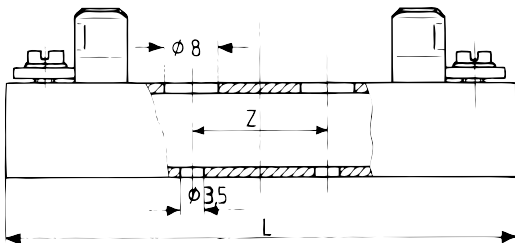
Leiterplatte oder Isolierplatte /  
printed circuit board or insulating plate

Anschlüsse / connections

Schraubanschlüsse / screw connections

Approbationen / approvals

-



**Varianten / Variants**

| Type    | Bemessungs-Spannung<br>Rated Voltage | Bemessungs-strom<br>Rated current | Bemessungs-leistung<br>Rated Power | L   | Z   | Sicherungseinsatz<br>Fuse-Link | Type   | Seite<br>Page |
|---------|--------------------------------------|-----------------------------------|------------------------------------|-----|-----|--------------------------------|--------|---------------|
| 7103401 | 1,2 kV                               | 6,3 A                             | 4 W                                | 75  | 20  | 8 x 50                         | 184000 | 70            |
| 7103701 | 3 kV                                 | 4 A                               | 4 W                                | 110 | 20  | 8 x 85                         | 185000 | 70            |
| 7104001 | 6 kV                                 | 4 A                               | 4 W                                | 145 | 80  | 8 x 120                        | 186000 | 71            |
| 7104301 | 10 kV                                | 2 A                               | 4 W                                | 175 | 100 | 8 x 150                        | 187000 | 71            |