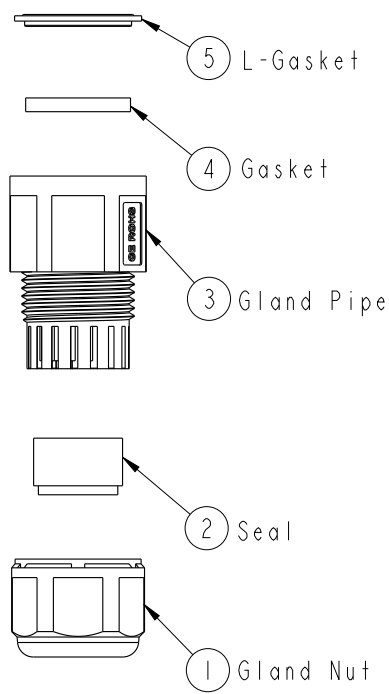
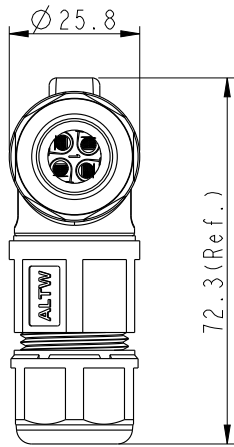
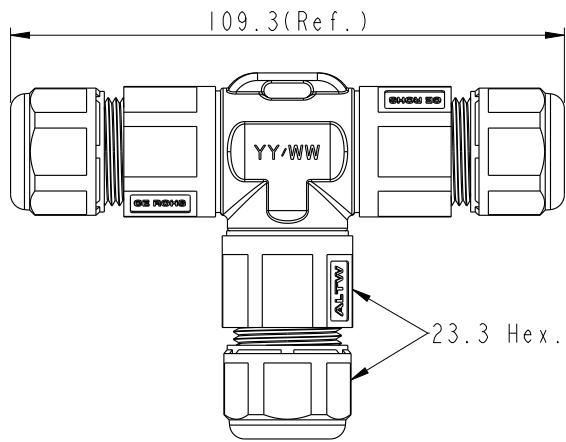
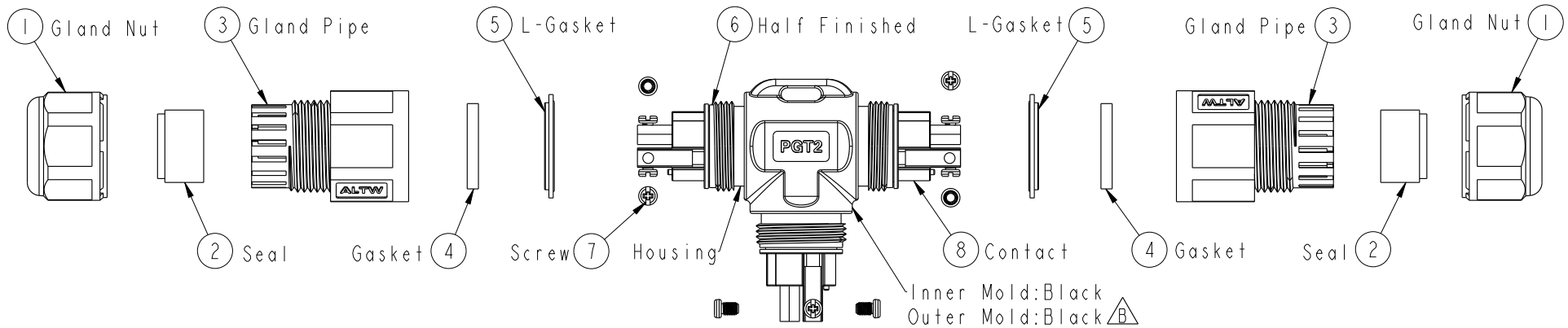
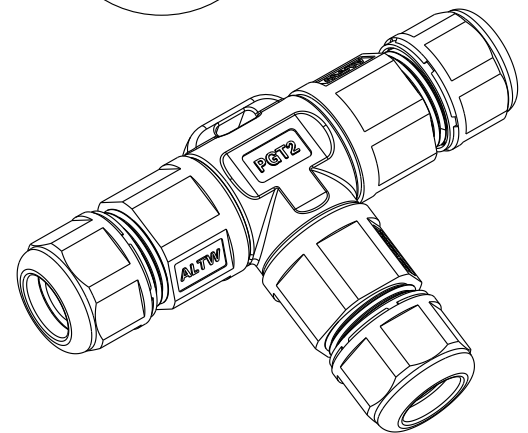


REV.	ECN NO.	DATE	SIGN	DESCRIPTION
A	Initial Release	2015/12/28	Joyy	Change Rev 01 to Rev A
B	LEN1650238~249	2015/04/23	Joyy	Modify The Wire Cross Section



ALTW
CONFIDENTIAL
 2016-04-23
R&D DEPT.



UNIT: mm		
TOLERANCE	.X ±0.25	
.XX ±0.1		
.XXX ±0.05		
ANGLES	±1°	

TITLE PGT2 Cable Joiner Screw-in Type			
SCALE 67:100	SIZE A4	SHEET 1 OF 3	
REV. B	WC-REV. A.12	☉: Inspection item	

Amphenol LTW
 安費諾亮泰企業股份有限公司

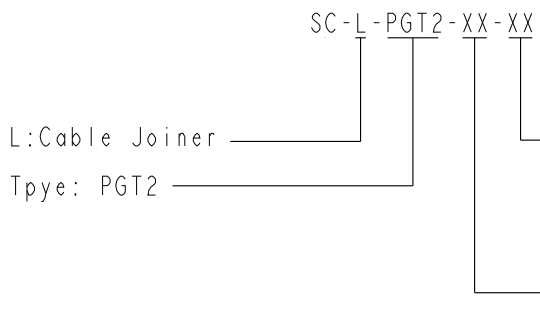
ITEM NO.	DRAWN BY Joyy	DATE 2016-04-23
DWG NO. SC-L-PGT2-XX-XX	CHECKED BY Lu Di	DATE 2016-04-23
CUSTOMER ALTW	APPROVED BY Jerry	DATE 2016-04-23

THIS DOCUMENT IS SUBJECT TO CHANGE WITHOUT NOTICE. IT IS CONFIDENTIAL AND A PROPERTY OF AMPHENOL LTW. DISCLOSURE TO THIRD PARTY HAS TO BE AUTHORIZED BY AMPHENOL LTW.

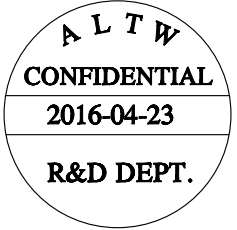
F
E
D
C
B
A

1 2 3 4 5 6 7 8

F
E
D
C
B
A

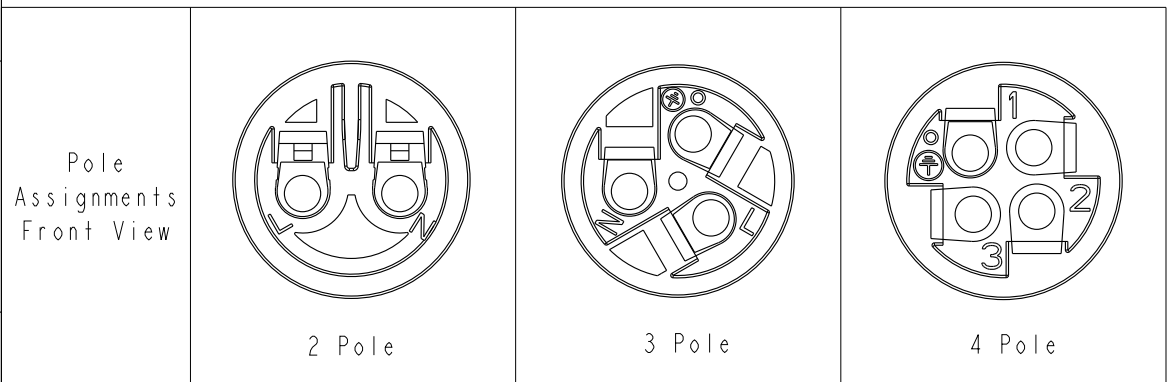


Seal's Color: BL-Blue(藍色) For Cable Range: $\varnothing 4.5 \sim \varnothing 6.5\text{mm}$
 YW-Yellow(黃色) For Cable Range: $\varnothing 6.6 \sim \varnothing 8.5\text{mm}$
 GN-Green(綠色) For Cable Range: $\varnothing 8.6 \sim \varnothing 10.5\text{mm}$
 RD-Red(紅色) For Cable Range: $\varnothing 10.6 \sim \varnothing 12.5\text{mm}$
 No. of Conductor: 02-2Poles
 03-3Poles
 04-4Poles



- Note:
- * $\text{\textcircled{C}}$ Important Dimension To Check.
 - * Waterproof Rate: IP68 (50M,24H)
 - * Housing: Nylon+GF, Black.
 - * Gland Nut: Nylon+GF, Black.
 - * Gland Pipe: Nylon, Black.
 - * Contact: Brass, Nickel Plated
 - * Gasket & L- Gasket : Silicone, Yellow.
 - * Seal: Silicone, Blue & Yellow & Green & Red.
 - * Rated Voltage: 2~4 Pole 450VAC Or DC
 - * Rated Current: 2 & 3 Pole Max. 20A ,
4 Pole Max. 15A.
 - * Operating Temperature: $-40^{\circ} \sim +105^{\circ}$.
 - * Gland Pipe Recommended Tightening Torque:
6~8 Kgf.cm(0.59~0.78 N.m)
 - * Gland Nut Recommended Tightening Torque:
6~8 Kgf.cm(0.59~0.78 N.m)
 - * Seal For Cable OD: $\varnothing 4.5 \sim \varnothing 6.5\text{mm}$, Blue.
 $\varnothing 6.6 \sim \varnothing 8.5\text{mm}$, Yellow.
 $\varnothing 8.6 \sim \varnothing 10.5\text{mm}$, Green .
 $\varnothing 10.6 \sim \varnothing 12.5\text{mm}$, Red.

- $\triangle B$ * Screws for Wire connection recommended tightening torque: 1.19~2.30kgf.cm / 0.117~0.226 N.m
- $\triangle B$ * Applicable Wire gauge (Stranded wire cross section) 0.75mm² (18AWG) ~ 2.5mm² (14AWG)

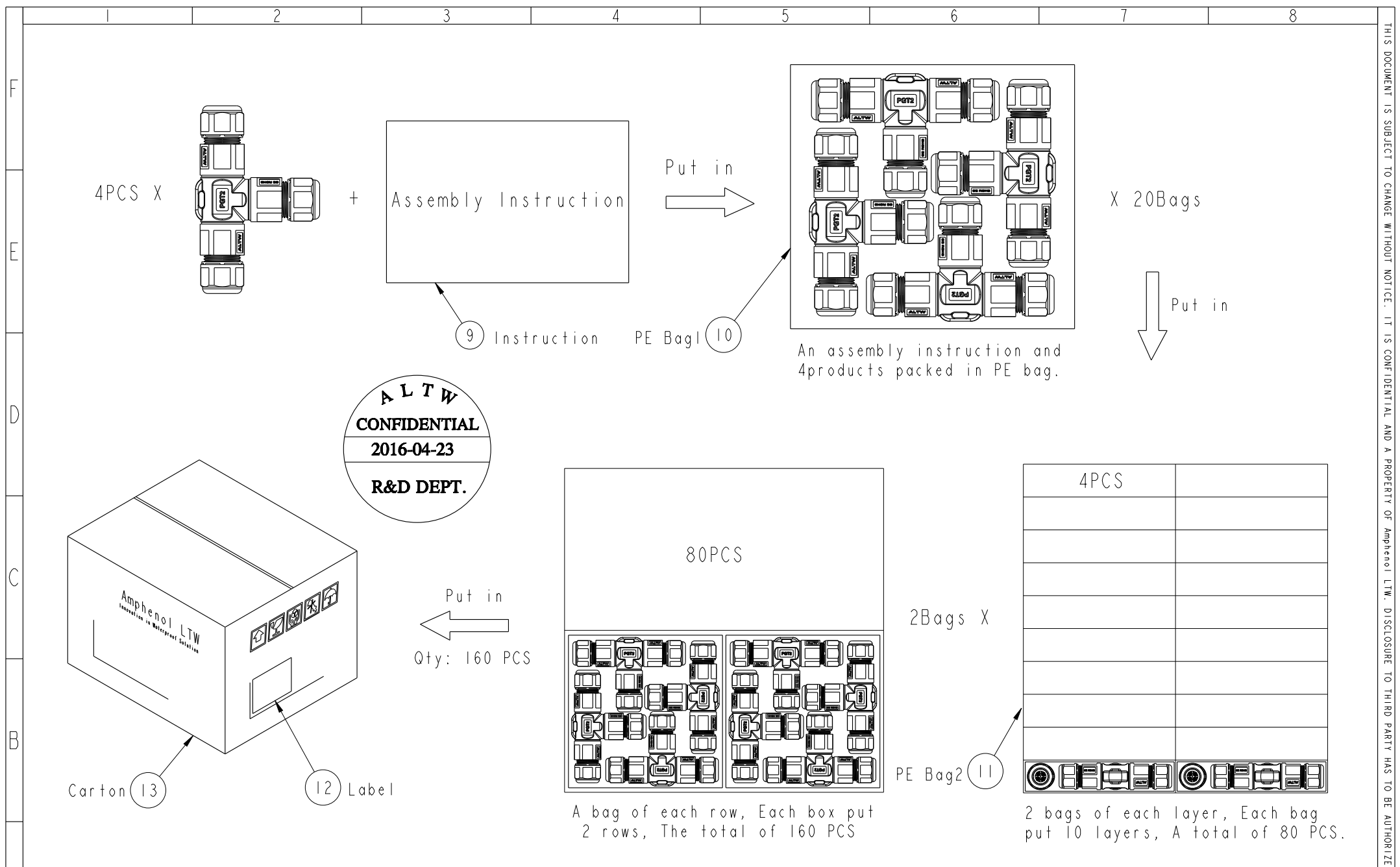


UNIT:mm		TITLE PGT2 Cable Joiner Screw-in Type	
TOLERANCE .X ±0.25 .XX ±0.1 .XXX ±0.05 ANGLES ±1°	SCALE 67:100	SIZE A4	SHEET 2 OF 3
	REV. B	WC-REV. A.12	$\text{\textcircled{C}}$: Inspection item

Amphenol LTW
 安費諾亮泰企業股份有限公司

ITEM NO	DRAWN BY Joyy	DATE 2016-04-23
DWG NO SC-L-PGT2-XX-XX	CHECKED BY Lu Di	DATE 2016-04-23
CUSTOMER ALTW	APPROVED BY Jerry	DATE 2016-04-23

THIS DOCUMENT IS SUBJECT TO CHANGE WITHOUT NOTICE. IT IS CONFIDENTIAL AND A PROPERTY OF Amphenol LTW. DISCLOSURE TO THIRD PARTY HAS TO BE AUTHORIZED BY Amphenol LTW.



A	UNIT: mm	TITLE: PGT2 Cable Joiner Screw-in Type		ITEM NO	DRAWN BY: Joyy	DATE: 2016-04-23
	TOLERANCE .X ±0.25 .XX ±0.1 .XXX ±0.05 ANGLES ±1°	SCALE: 67:100	SIZE: A4	SHEET: 3 OF 3	CHECKED BY: Lu Di	DATE: 2016-04-23
	REV. B	WC-REV. A.12	QC: Inspection item		APPROVED BY: Jerry	DATE: 2016-04-23
Amphenol LTW 安費諾亮泰企業股份有限公司				CUSTOMER: ALTW		