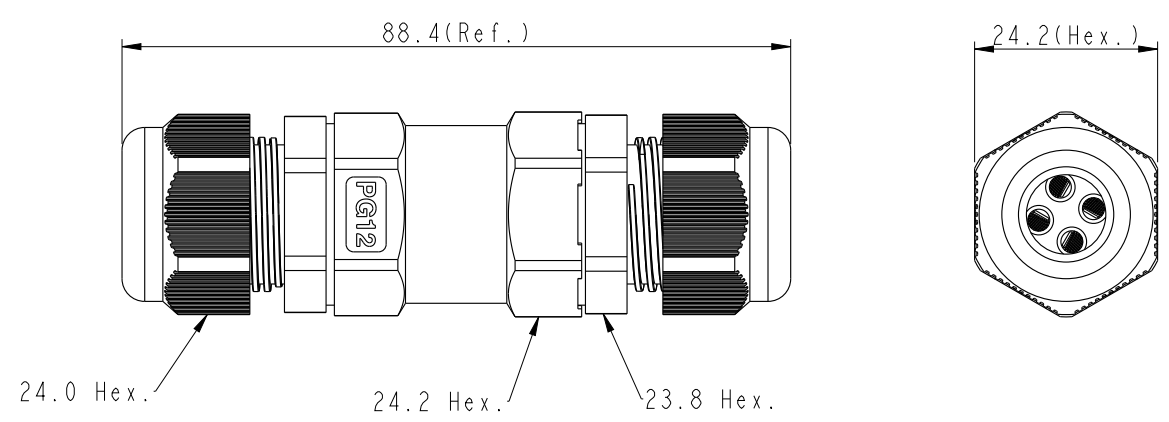
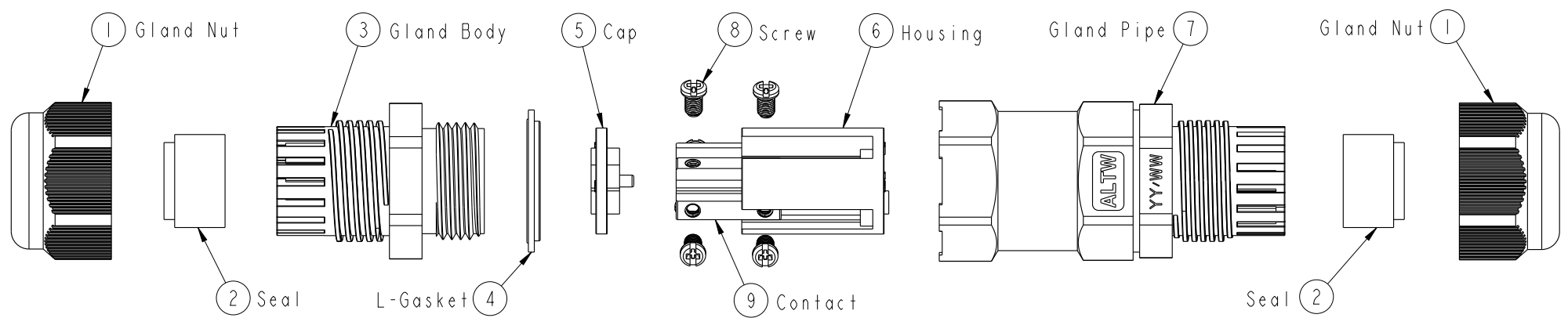


THIS DOCUMENT IS SUBJECT TO CHANGE WITHOUT NOTICE. IT IS CONFIDENTIAL AND A PROPERTY OF Amphenol LTW. DISCLOSURE TO THIRD PARTY HAS TO BE AUTHORIZED BY Amphenol LTW.

REV.	ECN NO.	DATE	SIGN	DESCRIPTION
A	Initial Release	2015/12/31	Joyy	Change Rev.01 To Rev.A
B	LEN1650250~261	2015/04/25	Joyy	Modify The Wire Cross Section



ALTW
CONFIDENTIAL
2016-04-25
R&D DEPT.



UNIT: mm			TITLE PG12 Cable Joiner Screw-in Type
TOLERANCE .X ±0.25 .XX ±0.1 .XXX ±0.05 ANGLES ±1°	SCALE 1:1	SIZE A4	SHEET 1 OF 3
REV. B	WC-REV. A.7	☉: Inspection item	

Amphenol LTW
安費諾亮泰企業股份有限公司

ITEM NO.	DRAWN BY Joyy	DATE 2016-04-25
DWG NO. SC-L-PG12-XX-XX	CHECKED BY Lu Di	DATE 2016-04-25
CUSTOMER ALTW	APPROVED BY Jerry	DATE 2016-04-25

1 2 3 4 5 6 7 8

F

E

D

C

B

A

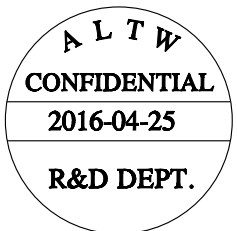
SC-L-PG12-XX-XX

L: Cable Joiner

Type: PG12

Seal's Color: BL-Blue(藍色) For Cable Range: $\varnothing 4.5 \sim \varnothing 6.5\text{mm}$
 YW-Yellow(黃色) For Cable Range: $\varnothing 6.6 \sim \varnothing 8.5\text{mm}$
 GN-Green(綠色) For Cable Range: $\varnothing 8.6 \sim \varnothing 10.5\text{mm}$
 RD-Red(紅色) For Cable Range: $\varnothing 10.6 \sim \varnothing 12.5\text{mm}$

No. of Conductor: 02-2Poles
 03-3Poles
 04-4Poles

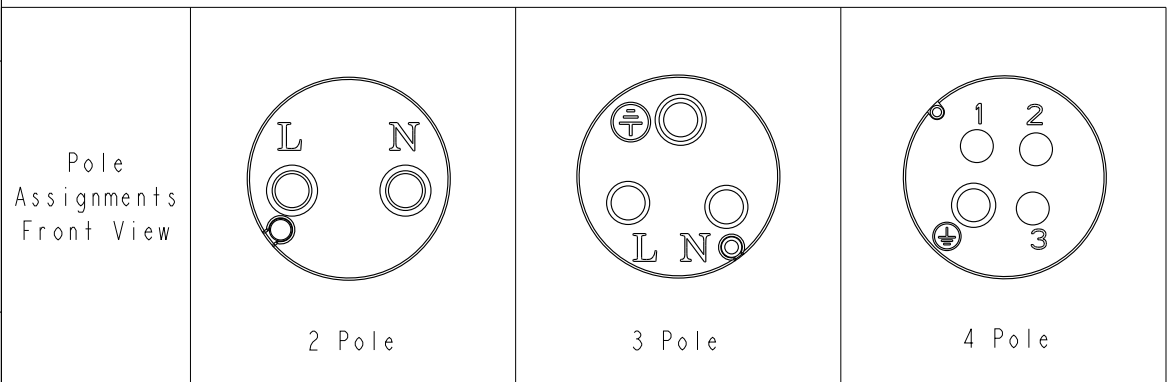


Note:

- * \varnothing Important Dimension To Check.
- * Waterproof Rate: IP68 (50M,24H)
- * Housing & Cap: Nylon+GF, Black.
- * Gland Pipe: Nylon, Black.
- * Gland Body: Nylon, Black.
- * Gland Nut: Nylon+GF, Black.
- * Contact: Brass, Nickel Plated
- * L-Gasket : Silicone, Yellow.
- * Seal: Silicone, Blue & Yellow & Green & Red.
- * Rated Voltage: 2~4 Pole 450V AC Or DC
- * Rated Current: 2 & 3 Pole Max. 20A ,
4 Pole Max. 15A.
- * Operating Temperature: $-40^{\circ} \sim +105^{\circ}$.
- * Gland Body Recommended Tightening Torque:
6~8 Kgf.cm(0.59~0.78 N.m)
- * Gland Nut Recommended Tightening Torque:
6~8 Kgf.cm(0.59~0.78 N.m)
- * Seal For Cable OD: $\varnothing 4.5 \sim \varnothing 6.5\text{mm}$, Blue.
 $\varnothing 6.6 \sim \varnothing 8.5\text{mm}$, Yellow.
 $\varnothing 8.6 \sim \varnothing 10.5\text{mm}$, Green.
 $\varnothing 10.6 \sim \varnothing 12.5\text{mm}$, Red.

$\triangle B$ * Screws for Wire connection recommended tightening torque: 1.29~2.50 kgf.cm / 0.127~0.245 N.m

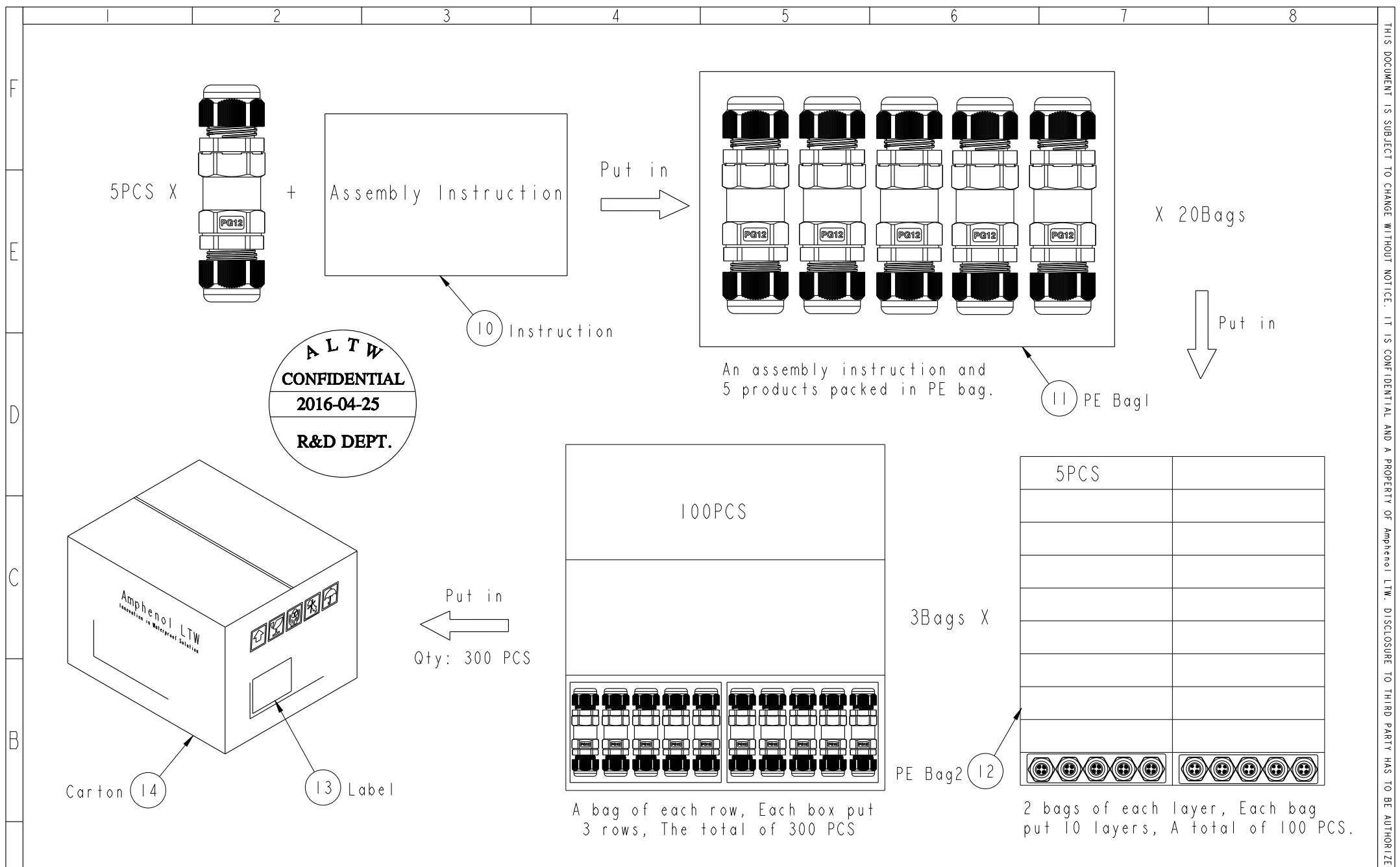
$\triangle B$ * Applicable Wire gauge (Stranded wire cross section) 0.75mm² (18AWG) ~ 2.5mm² (14AWG)



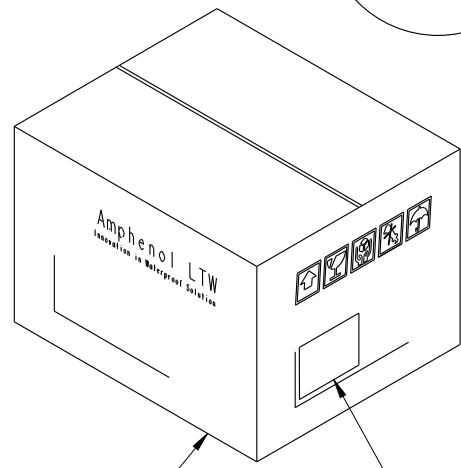
UNIT:mm		TITLE PG12 Cable Joiner Screw-in Type			<h2 style="margin: 0;">Amphenol LTW</h2> <p style="margin: 0;">安費諾亮泰企業股份有限公司</p>	ITEM NO	DRAWN BY	DATE
		SCALE 1:1	SIZE A4	SHEET 2 OF 3		DWG NO SC-L-PG12-XX-XX	CHECKED BY Lu Di	DATE 2016-04-25
		REV. B	WC-REV. A.7	\varnothing : Inspection item		CUSTOMER ALTW	APPROVED BY Jerry	DATE 2016-04-25

1 2 3 4 5 6 7 8 FMW10702-01-02A1

THIS DOCUMENT IS SUBJECT TO CHANGE WITHOUT NOTICE. IT IS CONFIDENTIAL AND A PROPERTY OF Amphenol LTW. DISCLOSURE TO THIRD PARTY HAS TO BE AUTHORIZED BY Amphenol LTW.



ALTW
CONFIDENTIAL
 2016-04-25
R&D DEPT.



UNIT: mm			TITLE PG12 Cable Joiner Screw-in Type	Amphenol LTW 安費諾亮泰企業股份有限公司	ITEM NO	DRAWN BY Joyy	DATE 2016-04-25	
TOLERANCE .X ±0.25 .XX ±0.1 .XXX ±0.05 ANGLES ±1°			SCALE 1:1	SIZE A4	SHEET 3 OF 3	DWG NO SC-L-PG12-XX-XX	CHECKED BY Lu Di	DATE 2016-04-25
			REV. B	WC-REV. A.7	Inspection item	CUSTOMER ALTW	APPROVED BY Jerry	DATE 2016-04-25