

Valve connectors - SACC-VB-3CON-M16/BI-1L-SV 24V - 1452233

Please be informed that the data shown in this PDF Document is generated from our Online Catalog. Please find the complete data in the user's documentation. Our General Terms of Use for Downloads are valid (<http://phoenixcontact.com/download>)



Valve connector, 3-pos., construction BI, 1 LED, with protective circuit, screw connection, M16 cable gland

RoHS

Key Commercial Data

Packing unit	1 STK
GTIN	
GTIN	4046356536400
Weight per Piece (excluding packing)	0.026 kg
Custom tariff number	85366990
Country of origin	Hungary

Technical data

Dimensions

External diameter	6 mm ... 8 mm
Central screw valve connector	M3 x 33,5

Ambient conditions

Ambient temperature (operation)	-25 °C ... 60 °C (valve plug)
Degree of protection	IP65

General

Rated current at 40°C	1.5 A
Rated voltage	24 V
Number of positions	3
Insulation resistance	> 2 GΩ
Status display	Yellow LED
Protective circuit/component	Varistor
Overvoltage category	II
Degree of pollution	3

Valve connectors - SACC-VB-3CON-M16/BI-1L-SV 24V - 1452233

Technical data

General

Connection method	Screw connection
Conductor cross section	0.25 mm ² ... 1.5 mm ²
Conductor cross section AWG	24 ... 16
Insertion/withdrawal cycles	50 (Valve connector)
Torque	1.8 Nm ±0.2 Nm (Pressure screw)
	0.4 Nm ±0.4 Nm (Central screw)
	0.2 Nm ±0.1 Nm (Contact screw)

Material

Flammability rating according to UL 94	HB
Valve plug contact material	CuZn
Valve plug contact surface material	CuSn
Material housing valve plug	PA
Sealing material	NBR

Standards and Regulations

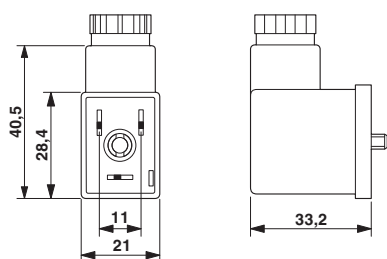
Flammability rating according to UL 94	HB
--	----

Environmental Product Compliance

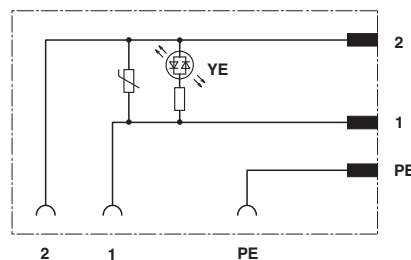
China RoHS	Environmentally friendly use period: unlimited = EFUP-e
	No hazardous substances above threshold values

Drawings

Dimensional drawing



Circuit diagram



Classifications

eCl@ss

eCl@ss 4.0	27140815
eCl@ss 4.1	27140815
eCl@ss 5.0	27143423
eCl@ss 5.1	27143423
eCl@ss 6.0	27143423
eCl@ss 7.0	27449001

Valve connectors - SACC-VB-3CON-M16/BI-1L-SV 24V - 1452233

Classifications

eCl@ss

eCl@ss 8.0	27440104
eCl@ss 9.0	27440105

ETIM

ETIM 4.0	EC002062
ETIM 5.0	EC002062
ETIM 6.0	EC002925

UNSPSC

UNSPSC 6.01	31251501
UNSPSC 7.0901	31251501
UNSPSC 11	31251501
UNSPSC 12.01	31251501
UNSPSC 13.2	32151909

Approvals

Approvals

Approvals

EAC / EAC

Ex Approvals

Approval details

EAC		RU C- DE.AI30.B.01102
-----	--	--------------------------

EAC		EAC-Zulassung
-----	--	---------------

Accessories

Accessories

Cable by the meter

Valve connectors - SACC-VB-3CON-M16/BI-1L-SV 24V - 1452233

Accessories

Cable reel - SAC-3P-100,0-PUR/0,5 - 1457393



Cable ring, PUR black, 3-pos., conductor colors: black 1-2/green-yellow, cable length: 100 m

Phoenix Contact 2017 © - all rights reserved
<http://www.phoenixcontact.com>