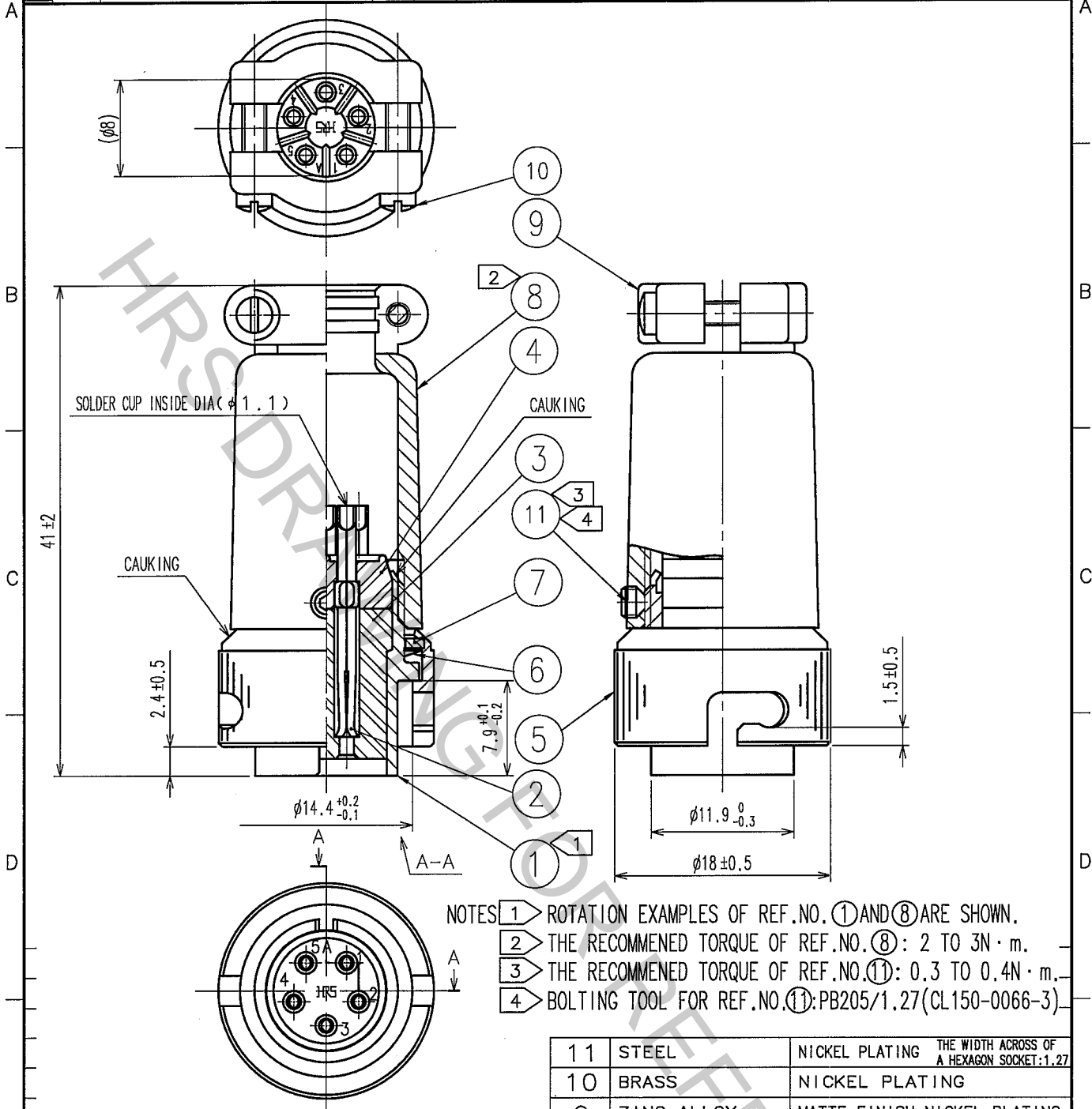


1		2			3			4		
COUNT	DESCRIPTION OF REVISIONS	BY	CHKD	DATE	COUNT	DESCRIPTION OF REVISIONS	BY	CHKD	DATE	
△					△					
△					△					
△					△					



- NOTES
- ① ROTATION EXAMPLES OF REF.NO.①AND⑧ARE SHOWN.
 - ② THE RECOMMENDED TORQUE OF REF.NO.⑧: 2 TO 3N · m.
 - ③ THE RECOMMENDED TORQUE OF REF.NO.⑪: 0.3 TO 0.4N · m.
 - ④ BOLTING TOOL FOR REF.NO.⑪: PB205/1.27(CL150-0066-3)

11	STEEL	NICKEL PLATING	THE WIDTH ACROSS OF A HEXAGON SOCKET:1.27
10	BRASS	NICKEL PLATING	
9	ZINC ALLOY	MATTE FINISH NICKEL PLATING	
8	ZINC ALLOY	MATTE FINISH NICKEL PLATING	
7	BRASS	NICKEL PLATING	
6	BERYLLIUM COPPER	NICKEL PLATING	
5	BRASS	MATTE FINISH NICKEL PLATING	
NO.	MATERIAL	FINISH, REMARKS	

4	DIALLYL PHTHALATE	(BLACK) UL94V-0		4	DIALLYL PHTHALATE	(BLACK) UL94V-0	
3	DIALLYL PHTHALATE	(BLACK) UL94V-0		3	DIALLYL PHTHALATE	(BLACK) UL94V-0	
2	COPPER ALLOY	SILVER PLATING 5μ m min.		2	COPPER ALLOY	SILVER PLATING 5μ m min.	
1	ZINC ALLOY	MATTE FINISH NICKEL PLATING		1	ZINC ALLOY	MATTE FINISH NICKEL PLATING	
NO.	MATERIAL	FINISH, REMARKS		NO.	MATERIAL	FINISH, REMARKS	

CODE NO. (OLD)	DRAWN	DESIGNED	CHECKED	APPROVED	RELEASED
CL	<i>Y. Yamada</i>	<i>Y. Yamada</i>	<i>H. Zemba</i>	<i>M. Sato</i>	
	<i>05.08.26</i>	<i>05.08.26</i>	<i>05.08.30</i>	<i>05.09.01</i>	

DRAWING NO.	PART NO.
EDC4-112328-71	RM12BPE-5S(71)
HRS HIROSE ELECTRIC CO., LTD.	CODE NO. CL109-0426-8-71

TO
R

