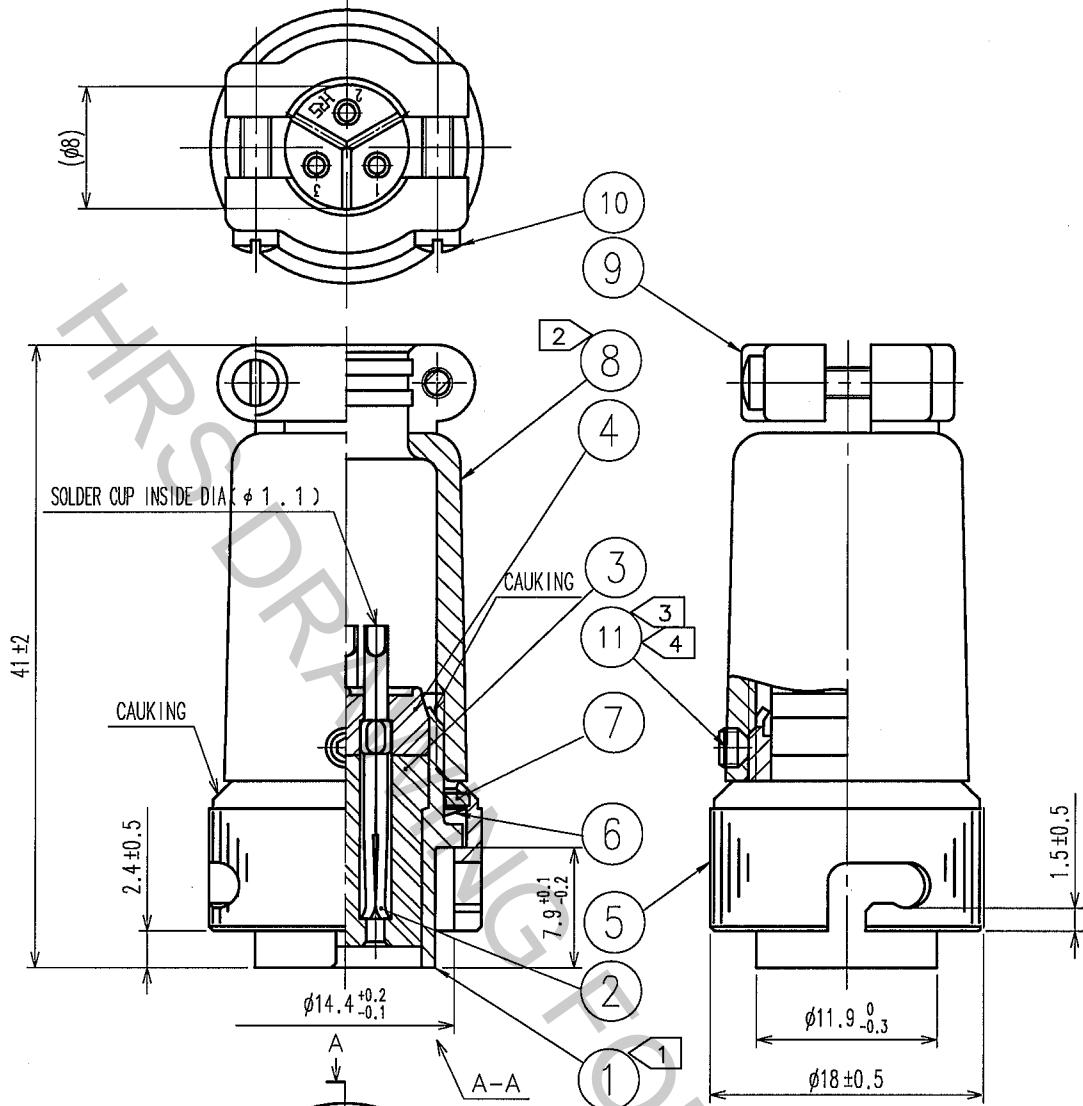


1					2					3					4				
COUNT	DESCRIPTION OF REVISIONS				BY	CHKD	DATE	COUNT	DESCRIPTION OF REVISIONS				BY	CHKD	DATE				
△								△											
△								△											
△								△											



- NOTES
- ① ROTATION EXAMPLES OF REF. NO. ① AND ⑧ ARE SHOWN.
 - ② THE RECOMMENDED TORQUE OF REF. NO. ⑧: 2 TO 3N · m.
 - ③ THE RECOMMENDED TORQUE OF REF. NO. ⑪: 0.3 TO 0.4N · m.
 - ④ BOLTING TOOL FOR REF. NO. ⑪: PB205/1.27 (CL150-0066-3)

11	STEEL	NICKEL PLATING	THE WIDTH ACROSS OF A HEXAGON SOCKET: 1.27
10	BRASS	NICKEL PLATING	
9	ZINC ALLOY	MATTE FINISH NICKEL PLATING	
8	ZINC ALLOY	MATTE FINISH NICKEL PLATING	
7	BRASS	NICKEL PLATING	
6	BERYLLIUM COPPER	NICKEL PLATING	
5	BRASS	MATTE FINISH NICKEL PLATING	
NO.	MATERIAL	FINISH, REMARKS	

4	DIALYL PHTHALATE	(BLACK) UL94V-0
3	DIALYL PHTHALATE	(BLACK) UL94V-0
2	COPPER ALLOY	SILVER PLATING 5μ m min.
1	ZINC ALLOY	MATTE FINISH NICKEL PLATING
NO.	MATERIAL	FINISH, REMARKS

CODE NO. (OLD)	DRAWN	DESIGNED	CHECKED	APPROVED	RELEASED
CL	<i>G. Yamada</i>	<i>G. Yamada</i>	<i>H. Zembu</i>	<i>M. Sato</i>	
	05.08.26	05.08.26	05.08.30	05.09.01	

 SCALE 2 : 1 UNITS mm	DRAWING NO.	PART NO.	CODE NO. CL109-0424-2-71
	EDC4-112326-71	RM12BPE-3S(71)	
 HRS HIROSE ELECTRIC CO., LTD.		1 1	

TO
R

