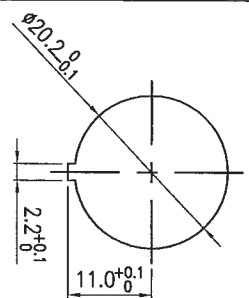
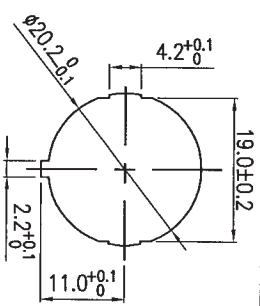


Rating	20A 14VDC
Contact Resistance	50m ohm Max.
Insulation Resistance	DC 500V 100M ohm Min.
Dielectric Strength	AC 1500V 1 minute
Operation Temperature	-20°C ~ 85°C
Switch Function	4P SPST (ON)-OFF (LED independent)

Mounting Hole

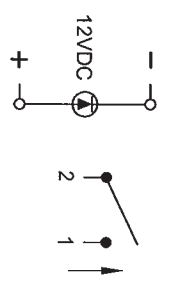


Thickness: 2.0~3.0

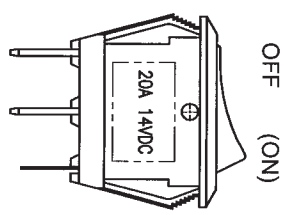
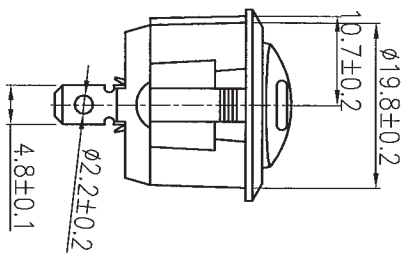
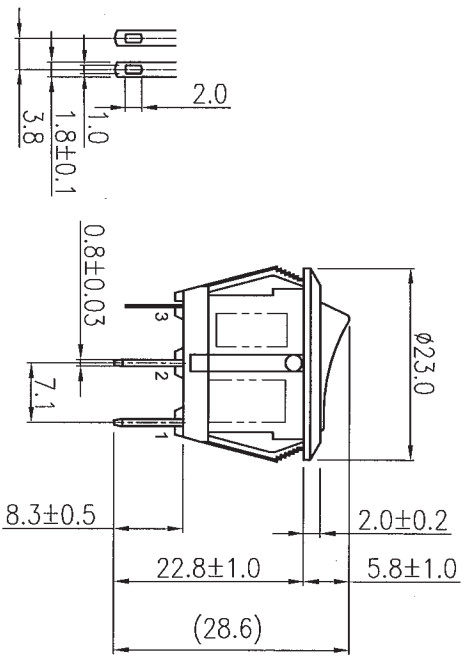
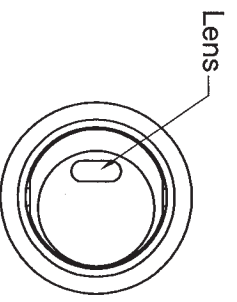


Thickness: 0.7~3.0

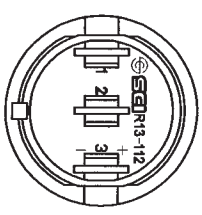
Circuit Diagram



Material:  
Frame: Black, PA#66  
Actuator: Black, PA#66  
Lens: Clear, PC  
LED: Red



原稿  
2015.8.27  
研發部



Tolerances  $\pm 0.3$  Unless Otherwise Specified

Date	Name	Description		No.
Drawn	Checked	Approved	SCI BOM No.	Model Name
曹盈芳		王偉山	1823015	ROCKER SWITCH
01/14/15		1/14/15	Customer No.	Model No.
			Unit	R13-112LF-02
			mm	Rev.
				0
				Shin Chin Industrial Co., Ltd.