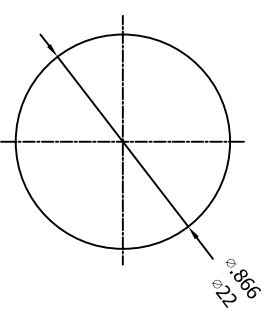
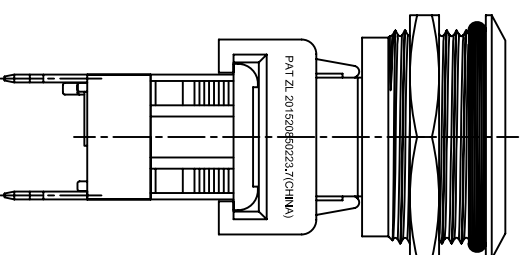
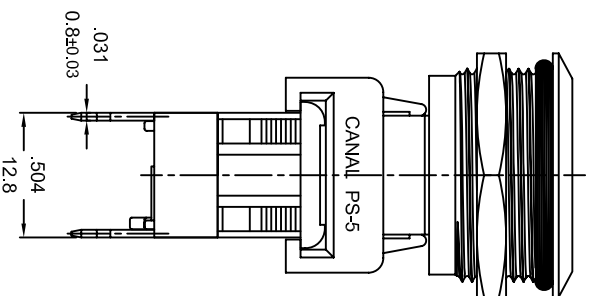
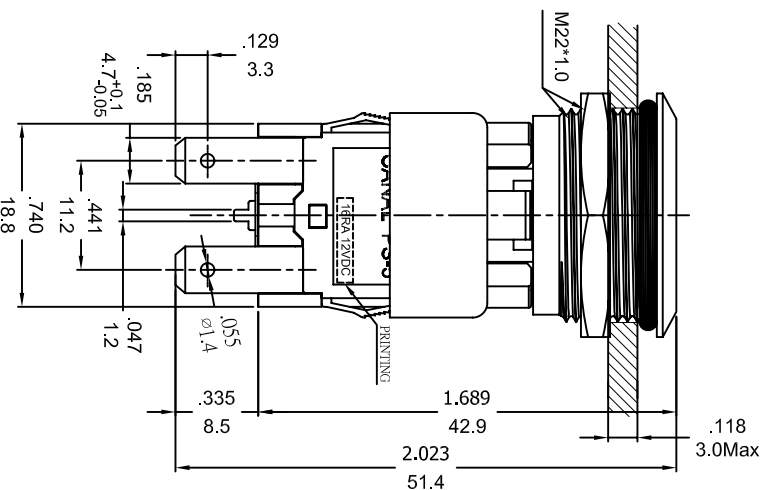


SPECIFICATION MODEL: "PS5" SERIES
 RATING: 16RA 12VDC(CURus/ENEC15)
 16(4)A 250V~ T125/55(CQC)
 WITHSTAND VOLTAGE: 1500VAC 1 MINUTE
 CONTACT RESISTANCE: 20mΩ INITIAL (MAX),
 PROTECTION TYPE: IP65(PANEL WATERPROOF)
 MECHANICAL COLLISION PROTECTION TYPE: IK07
 INSULATION RESISTANCE: 500VDC - 100MΩ (MIN).
 ILLUMINATION: RED LED 12VDC(Don't have to distinguish between the anode and cathode polarity)



PANEL MOUNTING

NOTE: TOLERANCES UNLESS OTHERWISE SPECIFIED: ±.012/0.3 (In/mm)

REVISION	DESCRIPTION	REVISED BY	TOLERANCES		ANGLE	SCALE	UNIT	PART NAME	PART NO	DWG NO
△			DRAWN BY	達志各	1°	5/4	mm	PS-5 SPEC DRAWING		S7562A
△			CHECKED BY	達志各						
△			DESIGNED BY	蔡劍						
△			APPROVED BY							
△	首次出圖	達志各	DATE	2018.09.06					PS5-210QH-BRD-0PAC	

