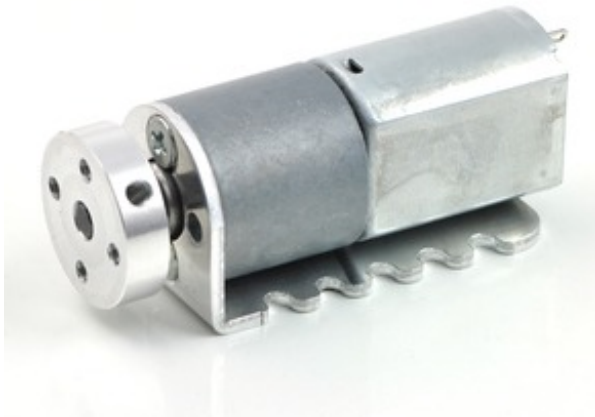


29:1 Metal Gearmotor 20Dx41L mm

Gearmotor Dimensions

The 20D mm line of brushed DC gearmotors are available in three different gear ratios, all of which have the same dimensions except for the length of the gearbox. The gearmotor face plate has two mounting holes threaded for M2.5 screws, and you can use our custom-designed 20D mm metal gearmotor bracket (shown in the left picture below) to mount the gearmotor to your project via these mounting holes and the screws that come with the bracket.



Pololu 20D mm gearmotor with bracket and hub.



White Pololu 60x8mm wheel on a Pololu 20D mm metal gearmotor.

This gearmotor has an output shaft with a diameter of 4 mm; the Pololu universal aluminum mounting hub for 4mm shafts can be used to mount our larger Pololu wheels (60mm-, 70mm-, 80mm-, and 90mm-diameter) or custom wheels and mechanisms to the gearmotor's output shaft (see the right picture above). The gearbox's output shaft also works directly with the 120mm-diameter Wild Thumper wheels, as shown below.

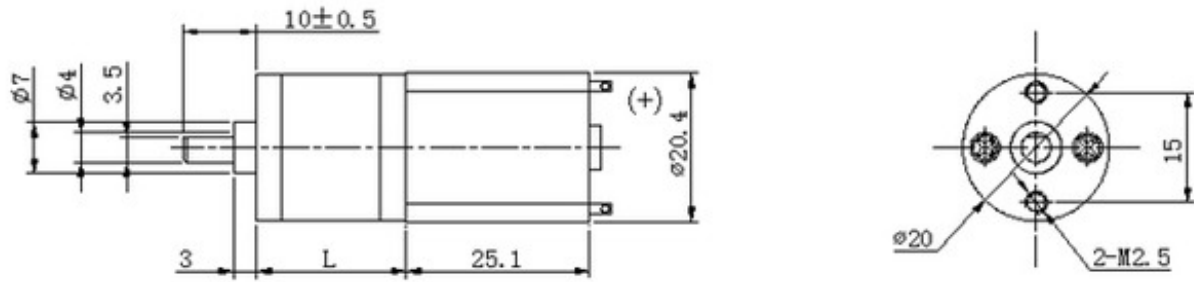


Pololu

Dagu Wild Thumper wheel 120x60mm (metallic red) with Pololu 20D mm metal gearmotor.

Dimension Diagram

The picture below shows the dimensions (in mm) of the 20D mm line of gearmotors. The value of L depends on the gear ratio of the gearbox: 29:1 is 15.7 mm, 73:1 is 17.2 mm, and 154:1 is 18.6 mm.



20D mm metal gearmotor dimensions (units in mm; L depends on gear ratio).



Note: These motors are intended for use at 6 V. In general, these kinds of motors can run at voltages above and below this nominal voltage, so they should comfortably operate in the 3 – 9 V range. Lower voltages might not be practical, and higher voltages could start negatively affecting the life of the motor.

Note: The older, discontinued 25:1 and 67:1 versions of this gearmotor now had a different mounting hole spacing and work with a slightly different bracket. This bracket is not compatible with the 29:1, 73:1, and 154:1 20D mm gearmotors we currently offer.

Selecting the Right Gearmotor

We offer a wide selection of metal gearmotors that offer different combinations of speed and torque. Our metal gearmotor comparison table can help you find the motor that best meets your project's requirements.



Some of the Pololu metal gearmotors.

[Documentation on producer website.](http://www.pololu.com)