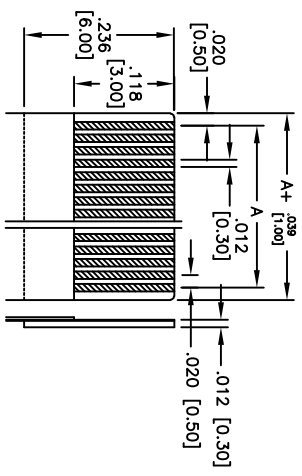
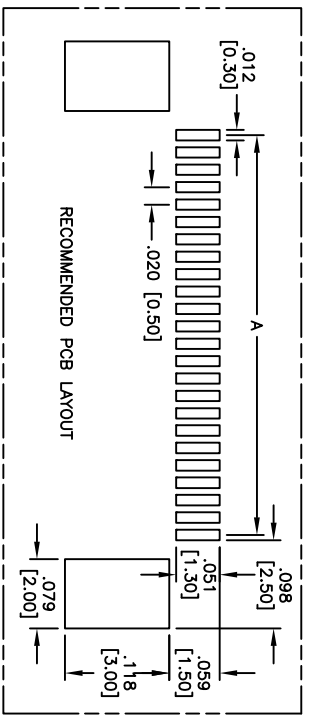
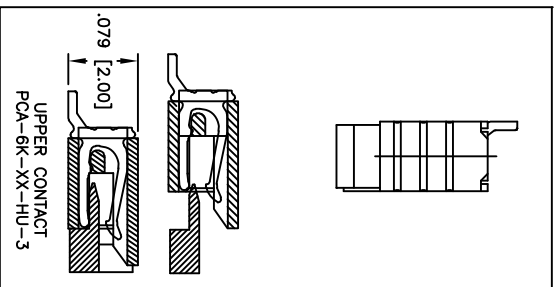
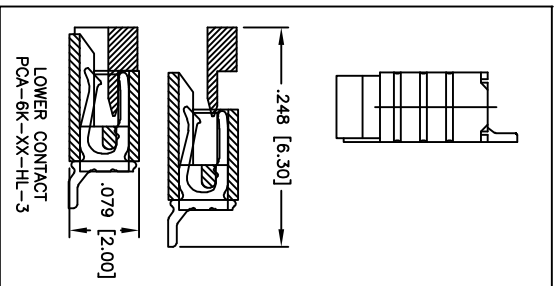
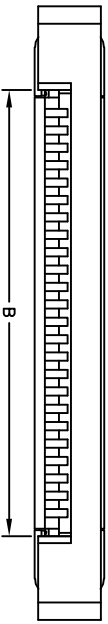
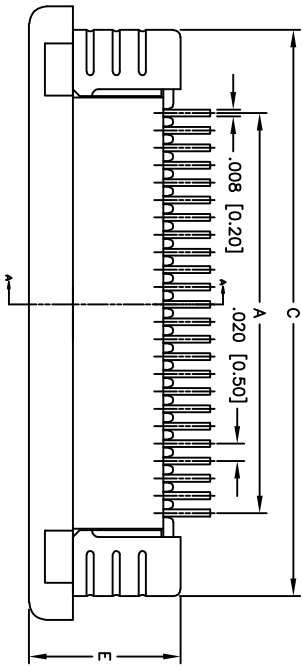
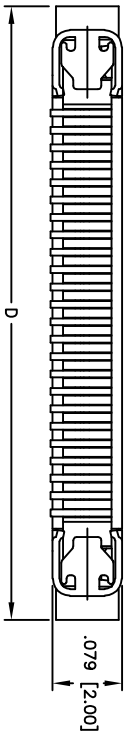


APPROVED: _____
 DATE: _____ TITLE: _____

Rev	AWO #	Description	Date	Appr
-		RELEASED	9/20/10	
A		REVISED SPEC.	12/10/12	



Positions: 4 thru 60
 A = .020 [0.50] x No. of (Positions-1)
 B = A + .043 [1.10]
 C = A + .197 [5.00]
 D = A + .240 [6.10]
 E = .173 [4.40].....4 thru 34
 .193 [4.90].....35 thru 60

ADAM TECH

909 Railway Avenue, Union, NJ 07083
 Phone: 908-687-5000 Fax: 908-687-5710

ZIF FLEX CIRCUIT CONNECTOR
 SIDE ENTRY, SMT TYPE

SPECIFICATIONS:
 Material: Hi-temp thermoplastic, rated UL 94V-0
 Insulator: Phosphor Bronze
 Fitting Nail: Brass, Tin plated
 Plating: Tin over Copper underplate overall.
 Electrical:
 Operating voltage: 50 VAC/DC
 Current rating: 0.5 A AC/DC
 Contact resistance: 20 mohms Max.
 Insulation resistance: 500 mohms Min.
 Withstand Voltage: 200V AC/minute
 Temperature Rating:
 Operating temperature: -25°C to +85°C
 Environmental:
 Lead free, RoHS compliant.



UNLESS OTHERWISE SPECIFIED ALL DIMENSIONS ARE INCHES [MM]	
TOLERANCES EXCEPT AS NOTED	
INCHES	HOLDS
.X ± .10	± .10
.XX ± .020	± .015
.XXX ± .015	± .010
APPROVALS	DATE
DRAWN	DY
CHECKED	
APPROVED	

SIZE	PART NO.	REV.
X	PCA-6K-XX-HX-3	A
REF: S00167T	SCALE: NTS	SHEET 1 OF 1