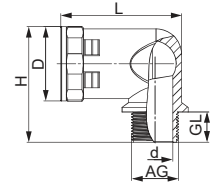




Material	Polyamide
Protection category	IP55
Operating Temperature	-30°C - +80°C (-22°F - +176°F)
Colours	grey (RAL 7031), black (RAL 9005)

RoHS

- // raw material according to UL94
- // locknut optional
- // easy disassembly without tools



AG	d mm	D mm	G mm	H mm	L mm	fits to Polyamide-Conduit DN	Number grey	Number black
M12	8,2	18,7	11	36,3	35,7	6	1.535.1200.50	1.535.1201.50
M16	10,8	21,7	11	37,3	38,5	10	1.535.1600.51	1.535.1601.51
M16	10,9	26	11	41	43,8	12	1.535.1600.50	1.535.1601.50
M20	14,7	28	11	44	46	14	1.535.2000.51	1.535.2001.51
M20	15,2	32	13	51,5	51	17	1.535.2000.50	1.535.2001.50
M25	18,7	39,5	16	61,2	64,3	23	1.535.2500.50	1.535.2501.50
FG7	8,2	18,7	11	36,3	35,7	6	1.535.0700.14	1.535.0701.14
FG9	10,3	21,7	11	37,3	38,5	10	1.535.0900.14	1.535.0901.14
FG11	13,3	26	11	41	43,8	12	1.535.1100.14	1.535.1101.14
FG13,5	15,3	28	11	44	46	14	1.535.1300.14	1.535.1301.14
FG16	16,6	32	13	51,5	51	17	1.535.1600.14	1.535.1601.14
FG21	22,4	39,5	16	61,2	64,3	23	1.535.2100.14	1.535.2101.14