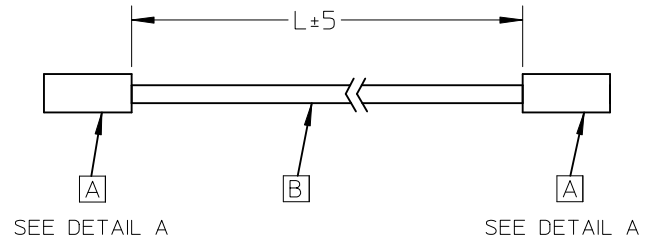


REVISIONS				
EC NO	DATE	REV	DESCRIPTION	CHANGER
	13.11.15	A	INITIAL RELEASE.	Andrew

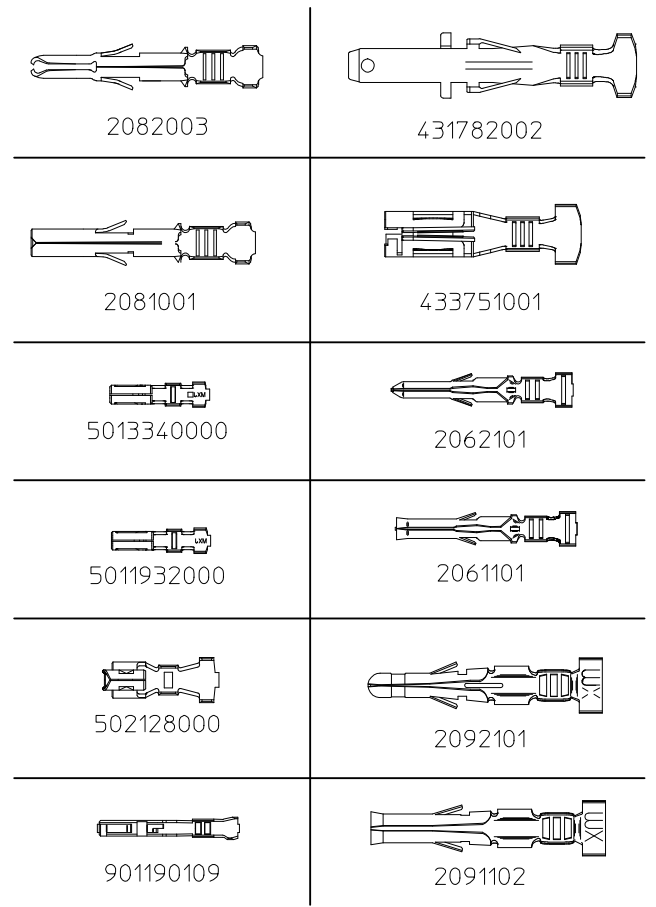
MATERIAL NO.	TITLE	L(mm)	ITEM	DESCRIPTION	Q'TY
688014059	.093" Male 300mm cable	300	A	TERMINAL 14-20AWG 02092101	2
			B	WIRE UL1061 18AWG BLACK	A/R
688014058	.093" Male 150mm cable	150	A	TERMINAL 14-20AWG 02092101	2
			B	WIRE UL1061 18AWG BLACK	A/R
688014061	.093" Female 300mm cable	300	A	TERMINAL 14-20AWG 02091102	2
			B	WIRE UL1061 18AWG BLACK	A/R
688014060	.093" Female 150mm cable	150	A	TERMINAL 14-20AWG 02091102	2
			B	WIRE UL1061 18AWG BLACK	A/R
688014055	.062" Male 300mm cable	300	A	TERMINAL 18-24AWG 02062101	2
			B	WIRE UL1061 22AWG BLACK	A/R
688014054	.062" Male 150mm cable	150	A	TERMINAL 18-24AWG 02062101	2
			B	WIRE UL1061 22AWG BLACK	A/R
688014057	.062" Female 300mm cable	300	A	TERMINAL 18-24AWG 02061101	2
			B	WIRE UL1061 22AWG BLACK	A/R
688014056	.062" Female 150mm cable	150	A	TERMINAL 18-24AWG 02061101	2
			B	WIRE UL1061 22AWG BLACK	A/R
688014037	MLX Male 300mm cable	300	A	TERMINAL 14-20AWG 02082003	2
			B	WIRE UL1061 18AWG BLACK	A/R
688014036	MLX Male 150mm cable	150	A	TERMINAL 14-20AWG 02082003	2
			B	WIRE UL1061 18AWG BLACK	A/R
688014048	C-Grid III Female 150mm cable	150	A	TERMINAL 22-24AWG 901190109	2
			B	WIRE UL1061 22AWG BLACK	A/R
688014049	C-Grid III Female 300mm cable	300	A	TERMINAL 22-24AWG 901190109	2
			B	WIRE UL1061 22AWG BLACK	A/R
688014046	Duraclick Female 150mm cable	150	A	TERMINAL 24-30AWG 502128000	2
			B	WIRE UL1061 26AWG BLACK	A/R
688014047	Duraclick Female 300mm cable	300	A	TERMINAL 24-30AWG 502128000	2
			B	WIRE UL1061 26AWG BLACK	A/R



EC NO: CPG2014-1417 DRWN: JXIA004 CHKD: YXZOU APPR: FNIE 2013/11/17 2013/11/17 2013/11/18	QUALITY SYMBOLS $F_A = 0$ $F_T = 0$ $F_P = 0$	GENERAL TOLERANCES (UNLESS SPECIFIED)		DIMENSION STYLE MM ONLY		SCALE ---	DESIGN UNITS METRIC	THIRD ANGLE PROJECTION			
				mm	INCH	DRAWN BY JXIA004	DATE 2013/11/17	TITLE SEE TABLE			
				± ---	± ---	CHECKED BY YXZOU	DATE 2013/11/17				
				4 PLACES	± ---	± ---	APPROVED BY FNIE	DATE 2013/11/18	<b>molex</b> MATERIAL NO. SEE TABLE DOCUMENT NO. SD-68801-115 SHEET NO. 1 OF 2		
				3 PLACES	± ---	± ---	DRAFT WHERE APPLICABLE MUST REMAIN WITHIN DIMENSIONS				
		2 PLACES	± ---	± ---	SIZE $\Delta 4$ THIS DRAWING CONTAINS INFORMATION THAT IS PROPRIETARY TO MOLEX INCORPORATED AND SHOULD NOT BE USED WITHOUT WRITTEN PERMISSION						

7 6 5 4 3 2 1

MATERIAL NO.	TITLE	L(mm)	ITEM	DESCRIPTION	Q'TY
688014038	MLX Female 150mm cable	150	A	TERMINAL 14-20AWG 02081001	2
			B	WIRE UL1061 18AWG BLACK	A/R
688014039	MLX Female 300mm cable	300	A	TERMINAL 14-20AWG 02081001	2
			B	WIRE UL1061 18AWG BLACK	A/R
688014042	Picoclasp Single row 150mm cable	150	A	TERMINAL 28-32AWG 5013340000	2
			B	WIRE UL1061 28AWG BLACK	A/R
688014043	Picoclasp Single row 300mm cable	300	A	TERMINAL 28-32AWG 5013340000	2
			B	WIRE UL1061 28AWG BLACK	A/R
688014040	Picoclasp Dual row 150mm cable	150	A	TERMINAL 28-32AWG 5011932000	2
			B	WIRE UL1061 28AWG BLACK	A/R
688014041	Picoclasp Dual row 300mm cable	300	A	TERMINAL 28-32AWG 5011932000	2
			B	WIRE UL1061 28AWG BLACK	A/R
688014052	Sabre Female 150mm cable	150	A	TERMINAL 14-16AWG 433751001	2
			B	WIRE UL1061 16AWG BLACK	A/R
688014053	Sabre Female 300mm cable	300	A	TERMINAL 14-16AWG 433751001	2
			B	WIRE UL1061 16AWG BLACK	A/R
688014050	Sabre Male 150mm cable	150	A	TERMINAL 14-16AWG 431782002	2
			B	WIRE UL1061 16AWG BLACK	A/R
688014051	Sabre Male 300mm cable	300	A	TERMINAL 14-16AWG 431782002	2
			B	WIRE UL1061 16AWG BLACK	A/R
688014044	Sherlock Female 150mm cable	150	A	TERMINAL 24-30AWG 502128000	2
			B	WIRE UL1061 26AWG BLACK	A/R
688014045	Sherlock Female 300mm cable	300	A	TERMINAL 24-30AWG 502128000	2
			B	WIRE UL1061 26AWG BLACK	A/R



DETAIL A  
TERMINAL FIGURE

NOTES  
1. THIS PRODUCT MUST MEET EU 2011/65/EU ROHS COMPLIANCE.

EC NO: CPG2014-1417 DRWN: JX1A004 CHKD: YXZOU APPR: FNIE	2013/11/17 2013/11/17 2013/11/18	DESCRIPTION REV	QUALITY SYMBOLS	GENERAL TOLERANCES (UNLESS SPECIFIED)		DIMENSION STYLE MM ONLY		SCALE ---	DESIGN UNITS METRIC	THIRD ANGLE PROJECTION		
			$F_p=0$ $F_c=0$ $F_s=0$	4 PLACES	mm	INCH	DRAWN BY JX1A004	DATE 2013/11/17	SEE TABLE			
				3 PLACES	mm	INCH	CHECKED BY YXZOU	DATE 2013/11/17				
				2 PLACES	mm	INCH	APPROVED BY FNIE	DATE 2013/11/18				
				1 PLACE	mm	INCH	MATERIAL NO.	DOCUMENT NO. SD-68801-115	SHEET NO. 2 OF 2			
DRAFT WHERE APPLICABLE MUST REMAIN WITHIN DIMENSIONS				SIZE A 4	THIS DRAWING CONTAINS INFORMATION THAT IS PROPRIETARY TO MOLEX INCORPORATED AND SHOULD NOT BE USED WITHOUT WRITTEN PERMISSION							

6 5 4 3 2 1