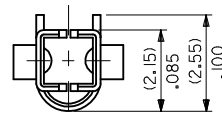
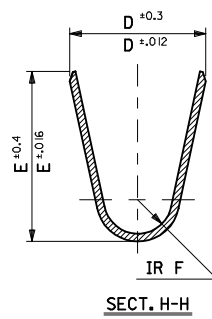
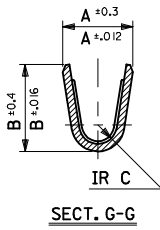


NOTES

1. MATERIAL: SEE CHART.
2. FINISH: SEE CHART.
3. PRODUCT SPECIFICATION: PS-5556-001, PS-5556-002, PS-5556-003.
4. PACKAGING SPECIFICATION: PK-5556-001 FOR CHAIN TERMINALS  
PK-5556-003 FOR LOOSE TERMINALS.
5. MATES WITH: 5558, 5566, 5569, 30069, 30070, 42440, 42404, 43879, 43810, 44068.
6. APPLICABLE HOUSING: 5557, 30067, 44516, OR 42474.
7. THE NUMBER OF SERRATIONS TO BE ONE FOR WIRE RANGE #22-28.
8. WHEN TERMINALS ARE INSTALLED IN THE HOUSING THE WIRES ARE TO BE DRESSED IN SUCH A MANNER TO ALLOW THE TERMINALS TO FLOAT FREELY IN THE POCKET.
9. THIS TERMINAL IS DESIGNED FOR SINGLE WIRE CRIMPING.
10. PART CONFORMS TO CLASS 'B' REQUIREMENTS OF COSMETIC SPECIFICATION PS-45499-002.



ADD PHOS BRONZE EC NO: UCP2014-3293 DRAWN: NGUYEN 2014/02/11 CHKD: BELL 2014/02/11 APPR: FSMITH 2014/03/21	QUALITY SYMBOLS ▽=0 ▽=0 ▽=0	GENERAL TOLERANCES (UNLESS SPECIFIED)		DIMENSION STYLE	SCALE	DESIGN UNITS	THIRD ANGLE PROJECTION	
				MM/IN		METRIC		
				DRAWN BY	DATE	TITLE		
				CHECKED BY	DATE	MINI FIT JR SELECT GOLD FEMALE CRIMP TERMINAL		
G3 REV	DESCRIPTION	ANGULAR ± 3°		MATERIAL NO.	DOCUMENT NO.		SHEET NO.	
		DRAFT WHERE APPLICABLE MUST REMAIN WITHIN DIMENSIONS		SEE CHART	SD-5556-006		1 OF 2	
				THIS DRAWING CONTAINS INFORMATION THAT IS PROPRIETARY TO MOLEX INCORPORATED AND SHOULD NOT BE USED WITHOUT WRITTEN PERMISSION				

10 9 8 7 6 5 4 3 2 1

PHOS BRONZE	SELECTIVE GOLD (0.76um)/30m. in. MIN. AND SELECTIVE TIN (2.54um)/100m.i. MIN. OVER NICKEL (1.27um)/50m. in. MIN. OVERALL	(0.9) .035	(4.5) .177	(3.6) .142	(0.6) .024	(2.7) .106	(2.3) .091	∅ (3.1) .122 MAX.	# 16	↑ -0186 -0185	PBGS3PL PBGS3P	LOOSE CHAIN	
		(0.6) .024	(2.3) .091	(2.3) .091	(0.4) .016	(1.65) .065	(1.8) .071	∅ (0.9-1.8) .035-.071	#22-28	-0184 -0183	PBGS2PL PBGS2P	LOOSE CHAIN	
		(0.9) .035	(4.5) .177	(3.6) .142	(0.5) .020	(2.3) .091	(1.9) .075	∅ (1.3-3.1) .051-.122	# 18-24	↓ -0182 3900-0181	PBGSPL PBGSP	LOOSE CHAIN	
BRASS	SELECTIVE GOLD (1.27um)/50m. in. MIN. AND SELECTIVE TIN ( 2.54 um)/ 100 m. in. MIN. OVER NICKEL (1.27um)/50m. in. MIN. OVERALL	(0.9) .035	(4.5) .177	(3.6) .142	(0.6) .024	(2.7) .106	(2.3) .091	∅ (3.1) .122 MAX.	# 16	↑ -0142 -0141	GS9L GS9	LOOSE CHAIN	
		(0.6) .024	(2.3) .091	(2.3) .091	(0.4) .016	(1.65) .065	(1.8) .071	∅ (0.9-1.8) .035-.071	#22-28	↓ -0140 39-00-0139	GS8L GS8	LOOSE CHAIN	
		(0.9) .035	(4.5) .177	(3.6) .142	(0.5) .020	(2.3) .091	(1.9) .075	∅ (1.3-3.1) .051-.122	# 18-24	40-13-0852 40-13-0851	GS7L GS7	LOOSE CHAIN	
	SELECTIVE GOLD (0.38um)/15m. in. MIN. AND SELECTIVE TIN ( 2.54 um)/ 100 m. in. MIN. OVER NICKEL (1.27um)/50m. in. MIN. OVERALL	(0.9) .035	(4.5) .177	(3.6) .142	(0.6) .024	(2.7) .106	(2.3) .091	∅ (3.1) .122 MAX.	# 16	↑ -0093	GS6L GS6	LOOSE CHAIN	
		(0.6) .024	(2.3) .091	(2.3) .091	(0.4) .016	(1.65) .065	(1.8) .071	∅ (0.9-1.8) .035-.071	#22-28	-0092 -0091	GS5L GS5	LOOSE CHAIN	
		(0.9) .035	(4.5) .177	(3.6) .142	(0.5) .020	(2.3) .091	(1.9) .075	∅ (1.3-3.1) .051-.122	# 18-24	-0074 -0073	GS4L GS4	LOOSE CHAIN	
	SELECTIVE GOLD (0.76um)/30m. in. MIN. AND SELECTIVE TIN (2.54um)/100m.i. MIN. OVER NICKEL (1.27um)/50m. in. MIN. OVERALL	(0.9) .035	(4.5) .177	(3.6) .142	(0.6) .024	(2.7) .106	(2.3) .091	∅ (3.1) .122 MAX.	# 16	-0090 -0089	GS3L GS3	LOOSE CHAIN	
		(0.6) .024	(2.3) .091	(2.3) .091	(0.4) .016	(1.65) .065	(1.8) .071	∅ (0.9-1.8) .035-.071	#22-28	-0435 -0434	GS2L7F GS27F	LOOSE CHAIN	
		(0.9) .035	(4.5) .177	(3.6) .142	(0.5) .020	(2.3) .091	(1.9) .075	∅ (1.3-3.1) .051-.122	# 18-24	↓ -0429 39-00-0428	↓ GSL7F 5556 GS7F	LOOSE CHAIN	
	MATERIAL	FINISH	F	E	D	C	B	A	INS. RANGE	WIRE RANGE	EDP NO.	ENG. NO.	FORM

<b>SEE SHEET 1</b> EC NO: UCP2014-3293 DRAWN: NGUYEN 2014/02/11 CHKD: J.BELL 2014/02/11 APPR: FSMITH 2014/03/21 <b>G3</b>	QUALITY SYMBOLS $\nabla F/0$ $\nabla E/0$ $\nabla D/0$	GENERAL TOLERANCES (UNLESS SPECIFIED)		DIMENSION STYLE <b>MM/IN</b>		SCALE <b>10:1</b>	DESIGN UNITS <b>METRIC</b>	THIRD ANGLE PROJECTION		
		mm		INCH		DRAWN BY HHIRAMOT	DATE '91/05/18	<b>MINI FIT JR SELECT GOLD FEMALE CRIMP TERMINAL</b>  		
		4 PLACES ± ---		± ---		CHECKED BY MFUKUSHI	DATE '98/11/09			
		3 PLACES ± ---		± .010		APPROVED BY FSMITH		DATE 2013/01/11	DOCUMENT NO. <b>SD-5556-006</b>	
2 PLACES ± 0.25		± .010		MATERIAL NO.		SHEET NO. <b>2 OF 2</b>		THIS DRAWING CONTAINS INFORMATION THAT IS PROPRIETARY TO MOLEX INCORPORATED AND SHOULD NOT BE USED WITHOUT WRITTEN PERMISSION		
1 PLACE ± 0.25		± ---		DRAFT WHERE APPLICABLE MUST REMAIN WITHIN DIMENSIONS		SIZE <b>B</b>				
0 PLACE ± ---		± ---		ANGULAR ± 3 °						

9 8 7 6 5 4 3 2 1