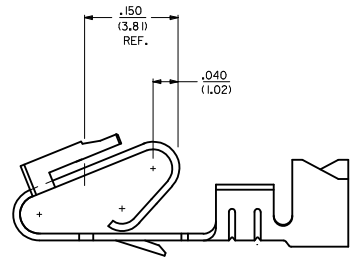
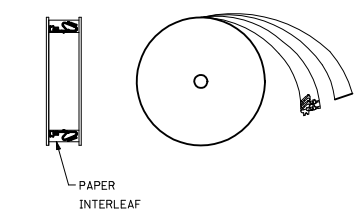


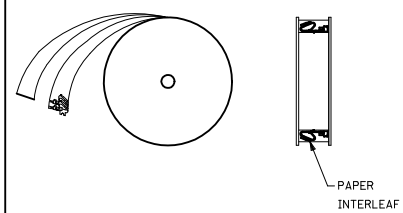
ALTERNATE GEOMETRY
SEE NOTE 10



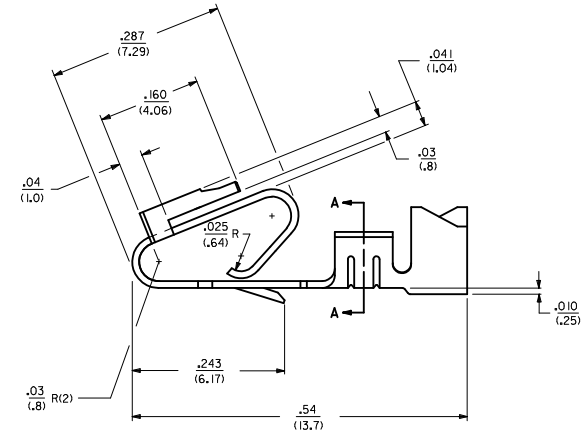
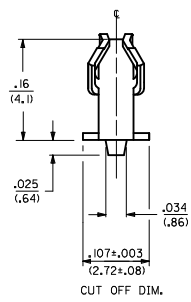
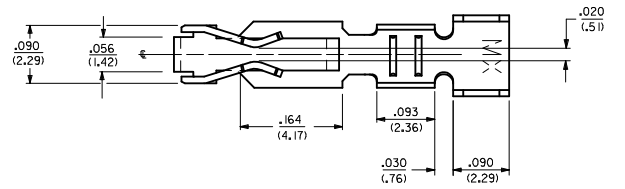
SELECTIVE PLATING
LOCATION



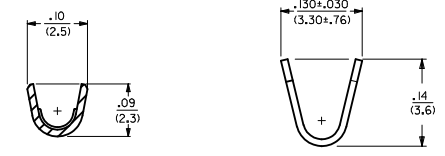
WINDING DETAIL 'A'



WINDING DETAIL 'B'



- NOTES:
 1. MATERIAL: SEE LEGEND
 2. FINISH:
 909 - OVERALL HOT TIN DIP: .000100/(0,00254) MIN.
 154 - OVERALL TIN: .000100/(0,00254) MIN. OVER .000050/(0,00127) MIN. NICKEL.
 555 - SELECT HARD GOLD: .000015/(0,00038) MIN. OVERALL NICKEL: .000030/(0,00076) MIN.
 558 - SELECT HARD GOLD: .000030/(0,00076) MIN. OVERALL NICKEL: .000050/(0,00127) MIN.
 OVERALL HARD GOLD FLASH: .000002/(0,00005) MIN.
 561 - SELECT HARD GOLD: .000030/(0,00076) MIN. OVERALL NICKEL: .000050/(0,00127) MIN.
 3. PRODUCT SPECIFICATION: PS-40-02
 4. PACKAGING SPECIFICATION: CHAIN FORM: SEE PK-6838-001
 LOOSE FORM: SEE PK-2759-001
 5. TERMINAL FOR USE IN HOUSING SERIES 6442 AND 41695.
 6. SEE 7258 SERIES FOR THIS PART WITH CRIMP FOR 22-26 AWG. WIRE.
 7. CRIMP FOR 18 TO 20 GA. WIRE WITH MAX. INSULATION DIA. OF .100(2,79). STRIP LENGTH OF .125/100 / (3,18/2,54).
 8. DIMENSIONS GIVEN ACROSS CENTERLINES ARE SYMMETRICAL ABOUT THOSE CENTERLINES WITHIN HALF THE TOTAL TOLERANCE.
 9. THIS PART CONFORMS TO CLASS B REQUIREMENTS OF COSMETIC SPECIFICATION PS-45499-002.
 10. ALTERNATE GEOMETRY PRESENT ON SOME PART NUMBERS. SEE SHEET 2.



SECTION A-A

LEGEND: 6838- ()

MATERIAL:
 (.27)/.0106 THK
 BLANK=BRASS
 A=PHOS BRONZE

WINDING
 A= PER DETAIL A
 BLANK= PER DETAIL B

FORM
 BLANK= CHAIN
 L= LOOSE

PLATING
 SEE NOTE 2

102 TO 154 PLTIG. IEC NO. UCF2012-1821 DRAWN BY: DRW/MK/STROH 2012/01/04 CHECKED BY: CHY/KM/KIPPER 2012/01/05 APPROVED BY: APPR:FSM/TH 2012/02/02 AR REV DESCRIPTION	QUALITY SYMBOLS ▽=0 ▽=0 ▽=0		GENERAL TOLERANCES (UNLESS SPECIFIED) <table border="1"> <tr> <th></th> <th>mm</th> <th>INCH</th> </tr> <tr> <td>4 PLACES</td> <td>±.010</td> <td>±.0004</td> </tr> <tr> <td>3 PLACES</td> <td>±.015</td> <td>±.0006</td> </tr> <tr> <td>2 PLACES</td> <td>±.025</td> <td>±.0010</td> </tr> <tr> <td>1 PLACE</td> <td>±.036</td> <td>±.0014</td> </tr> </table>			mm	INCH	4 PLACES	±.010	±.0004	3 PLACES	±.015	±.0006	2 PLACES	±.025	±.0010	1 PLACE	±.036	±.0014	DIMENSION STYLE IN/MM DRAWN BY: GUZIK DATE: 11/15/89 CHECKED BY: PATEL DATE: 11/15/89 APPROVED BY: LENZ DATE: 11/15/89		SCALE --- DESIGN UNITS INCH THIRD ANGLE PROJECTION	
		mm	INCH																				
	4 PLACES	±.010	±.0004																				
3 PLACES	±.015	±.0006																					
2 PLACES	±.025	±.0010																					
1 PLACE	±.036	±.0014																					
DRAFT WHERE APPLICABLE MUST REMAIN WITHIN DIMENSIONS			MATERIAL NO. SEE CHART		DOCUMENT NO. SD-6838																		
			THIS DRAWING CONTAINS INFORMATION THAT IS PROPRIETARY TO MOLEX INCORPORATED AND SHOULD NOT BE USED WITHOUT WRITTEN PERMISSION		MOLEX INCORPORATED TRIFURCON TERMINAL CRIMP TYPE, .156 CENTERS 18 TO 20 AWG WIRE 1 OF 2																		

2	AR
1	AR
	SHT/REV

20 19 18 17 16 15 14 13 12 11 10 9 8 7 6 5 4 3 2 1

6838-(*)**

PART NO.	ENG. NO.	
08-50-0187	6838-(P909)	SEE NOTE 1
08-50-0189	6838-(P909)L	SEE NOTE 1
08-50-0275	6838-(P909)-A	

6838-A(*)**

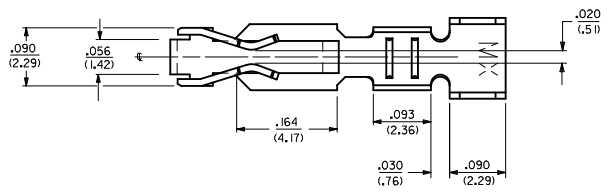
PART NO.	ENG. NO.	
08-58-0187	6838-A(P558)	
08-58-0189	6838-A(P558)L	
08-52-0112	6838-A(P909)	SEE NOTE 1
08-52-0113	6838-A(P909)L	SEE NOTE 1
08-50-0024	6838-A(154)	
08-50-0251	6838-A(154)L	
08-58-0105	6838-A(P555)	
08-58-0106	6838-A(P555)L	
08-58-0110	6838-A(P56 I)	SEE NOTE 1
08-58-0111	6838-A(P56 I)L	SEE NOTE 1
08-58-0118	6838-A(56 I)	
08-58-0119	6838-A(56 I)L	

NOTES:

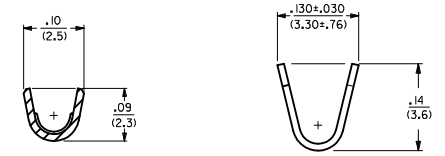
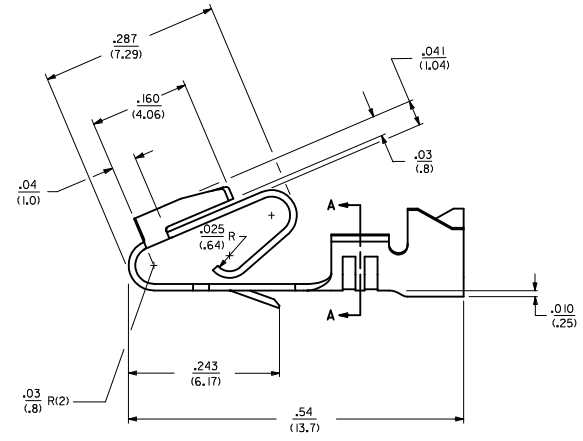
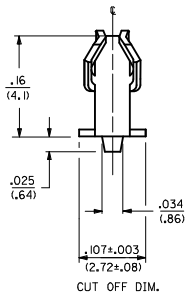
1. PART MANUFACTURED WITH ALTERNATE GEOMETRY. SEE SHEET 1.

SEE SHEET 1 IEC NO: UCF2012-1821 DRAWN BY: DRW:MMSTROH 2012/01/04 CHECKED BY: CHY:KH/KIPPER 2012/01/05 APPROVED BY: APPR:FSM/TH 2012/02/02 AR	QUALITY SYMBOLS ▽=0 ▽=0 ▽=0	GENERAL TOLERANCES (UNLESS SPECIFIED)		DIMENSION STYLE IN/MM	SCALE ---	DESIGN UNITS INCH	THIRD ANGLE PROJECTION	
		4 PLACES #--- #--- 3 PLACES #--- #--- 2 PLACES #--- #--- 1 PLACE #--- #---	mm INCH	DRAWN BY DATE GUZIK 11/15/89	TITLE TRIFURCON TERMINAL CRIMP TYPE, .156 CENTERS 18 TO 20 AWG WIRE			
		ANGULAR ±1/2°		CHECKED BY DATE PATEL 11/15/89	MOLEX INCORPORATED			
		DRAFT WHERE APPLICABLE MUST REMAIN WITHIN DIMENSIONS		APPROVED BY DATE LENZ 11/15/89	MATERIAL NO. SEE CHART	DOCUMENT NO. SD-6838	SHEET NO. 2 OF 2	
THIS DRAWING CONTAINS INFORMATION THAT IS PROPRIETARY TO MOLEX INCORPORATED AND SHOULD NOT BE USED WITHOUT WRITTEN PERMISSION								

19 18 17 16 15 14 13 12 11 10 9 8 7 6 5 4 3 2 1



- NOTES:
1. MATERIAL: SEE LEGEND
 2. FINISH: 909 - OVERALL HOT TIN DIP: .000100/10.00254) MIN.
 3. PRODUCT SPECIFICATION: PS-40-02
 4. PACKAGING SPECIFICATION: PK-6838-001
 5. PART IS FOR USE WITH 18 TO 20 GA. WIRE WITH MAX. INSULATION DIA. OF .110/(2.79), STRIP LENGTH OF .125/.100 / (3.18/2.54).
 6. SEE 7258 SERIES FOR THIS PART WITH CRIMP FOR 22-26 AWG. WIRE.
 7. TERMINAL FOR USE IN 6442 AND 41695 SERIES HOUSINGS.
 8. DIMENSIONS GIVEN ACROSS CENTERLINES ARE SYMMETRICAL ABOUT THOSE CENTERLINES WITHIN HALF THE TOTAL TOLERANCE.
 9. THIS PART CONFORMS TO CLASS B REQUIREMENTS OF COSMETIC SPECIFICATION PS-45499-002.



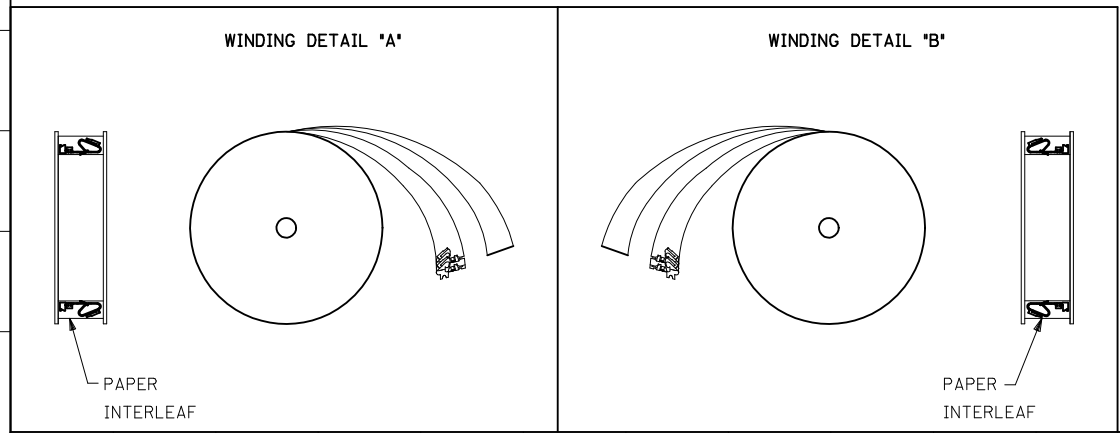
LEGEND: 6838- (P909) **

WINDING
BLANK= PER DETAIL B

FORM
BLANK= CHAIN

PLATING PER SDES-88
SEE NOTE 2

MATERIAL:
(.27)/.0106 THK
BLANK=BRASS



UPDATE GEOMETRY IEC NO. UCP2011-0681 DRAWN/KIPPER 2010/09/14 CHYKOS/SSOUSEK 2011/02/23 APPR:FSM/TH 2011/02/25	QUALITY SYMBOLS	GENERAL TOLERANCES (UNLESS SPECIFIED)	DIMENSION STYLE	SCALE	DESIGN UNITS	THIRD ANGLE PROJECTION
	$\nabla=0$ $\nabla=0$ $\nabla=0$	mm INCH 4 PLACES ± --- ± --- 3 PLACES ± --- ± .010 2 PLACES ± 0.25 ± .015 1 PLACE ± 0.36 ± --- ANGULAR ±1/2°	IN/MM	---	INCH	
	DRAFT WHERE APPLICABLE MUST REMAIN WITHIN DIMENSIONS	DRAWN BY JJS 07/29/04 CHECKED BY KSS 07/29/04 APPROVED BY YM 07/29/04	MATERIAL NO. 50291639 SIZE D	TITLE TRIFURCON TERMINAL CRIMP TYPE, .156 CENTERS 18 TO 20 AWG WIRE	MOLEX INCORPORATED	SHEET NO. 1 OF 1
	DOCUMENT NO. SD-6838-001		INCORPORATED AND SHOULD NOT BE USED WITHOUT WRITTEN PERMISSION			