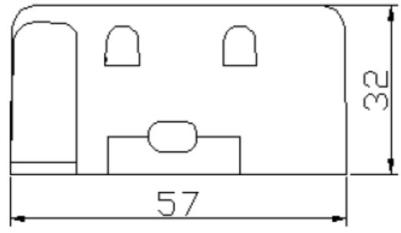
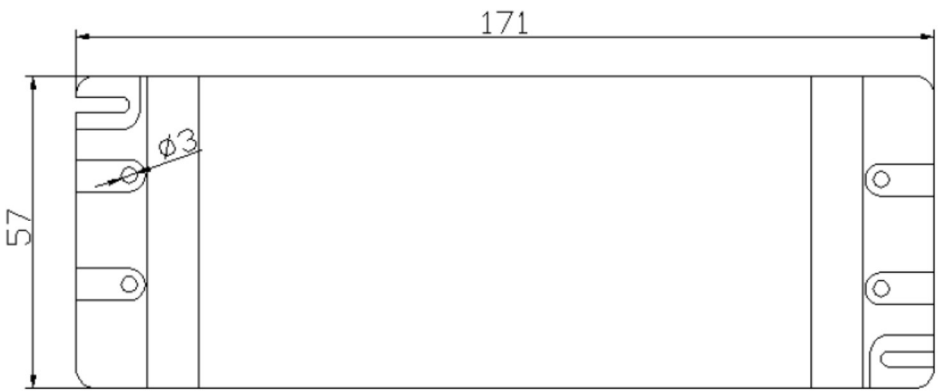




LED Power Supply Constant Voltage	
Model	LNG7512C
Voltage	12V
Current	6.25A
Power	75W

Input	Rated input voltage	230 VAC	
	Range of input voltage	220-240VAC	
	Frequency	50Hz	
	Power Factor	>0.9@Full Load, 240VAC	
	Current	0.5 A MAX. @Full Load	
	Start-Up time	<0.5S for ERP @Full Load	
	Inrush Current	60A MAX. @Full Load, 240 VAC	
	Unload Power Consumption	≤2W	
Output	Unload voltage	12.6VDC MAX	
	Load Voltage rang	NC	
	Constant Voltage	12V	
	Voltage Accuracy	±5% @220-240VAC	
	Voltage Regulation	≤3%@Full Load	
	Hold-up Time	<1s max,Io=0mA	
	Efficiency in full load	≥85%@Full Load ,240VAC	
	Ripple	NA	
	Power Max	75W	
Dimming	Dimmable or not	NA	
	Dimming mode	NA	
	Dimming current range	NA	
Protection	Over load Protection	105-150% Protection type: Auto Restore	
	Over Voltage Protection	>16VDC Protection type: Auto Restore	
	Short circuit Protection	Protection type: Auto Restore	
	Over Temperature protection	Protection type: Auto Restore	
	HI-pot	Input-Output(V.AC)	3000V/5mA/1min
	Input-FG(V.AC)	NA	
	Output-FG(V.AC)	NA	
	Leakage Current	<0.5mA(240VAC)	
Isolation	Input-Output(V.AC)	≥10MΩ@500VDC	
	Input-FG(V.AC)	NA	
	Output-FG(V.AC)	NA	
Environment/Life	Operating Temperature	-10°C...+40°C	
	tc	85°C	
	Storage Temperature	-20°C...+60°C	
	Humidity	20%-90%RH	
	Life time	>30,000h @50°C	
	HSF requirement	RoHS	
Feature	Dmension	171*57*32(LXWXH)mm	
	Approval	CE	
Safety @ EMC	Safety standards	EN 61347-1; EN61347-2-13 EN60598-1; EN60598-2-6	
	EMI	EN55015; EN61000-3-2 Class C EN61000-3-3	
	EMS		EN61547; EN 61000-4-2 - 8KV; 4KV
			Performance Criteria B
			EN 61000-4-5 — 1000V; Performance Criteria C


LED Power Supply Constant Voltage	
Model	LNG7512C
Voltage	12V
Current	6.25A
Power	75W



LABEL:

ESPE

LED POWER SUPPLY



LNG7512C

INPUT.....230VAC
50Hz 0.5A

OUTPUT.....12V \Rightarrow 6.25A





$\lambda \geq 0.9$ $t_c: 85^\circ\text{C}$ $t_a: 40^\circ\text{C}$ • t_c

Constant Voltage

N

L

110
M
M
F

+

-

SELV

MADE IN CHINA

IP20

CE

