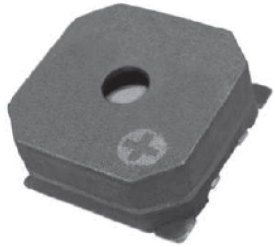


loudity

SMT41

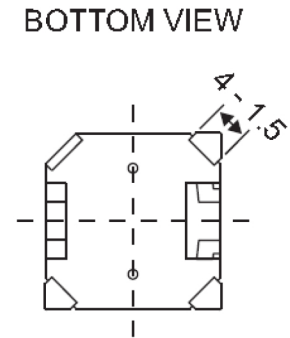
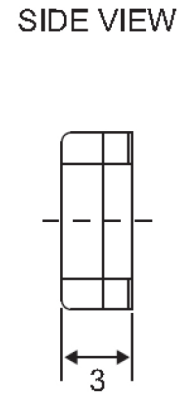
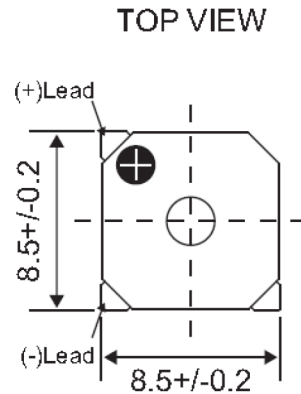


MATERIALS

Color - Black
Plastic Material - LCP
Terminal - SMD Type

Weight

approx. 0.6 gm.



All dimensions are in mm
Unspecified Tolerance are +/-0.5mm

| | | |
|-----------------------------|------|------------------|
| Model | Unit | LD-BZEL-T41-0803 |
| Operating Voltage | Vo-p | 2.5 ~ 4.8 |
| Rated Voltage | Vo-p | 3.6 |
| * Max. Rated Current | mA. | 90 |
| Coil Resistance | ohm | 16 +/- 5 |
| * Min. Sound Output at 10cm | dBA | 85 |
| Resonant Frequency | Hz | 2700 |
| Operating Temperature | °C | -20 ~ +60 |