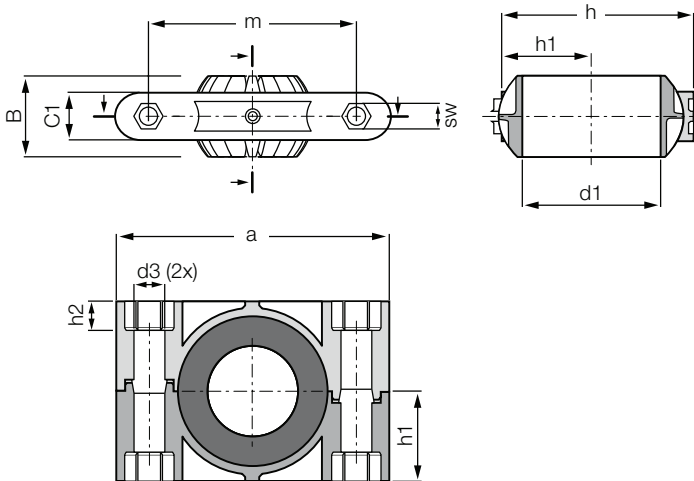


Pillow block bearing with split housing: KSTM-GT



- Fitting is easy and does not require shaft removal
- Maintenance-free, dry-running
- For high static loads
- Mounting: M12

Order key

Type	Size [mm]	Version
------	-----------	---------

K S T M - G T 4 0 - G T

Dimensional series K	Pillow block bearing	Metric	Split housing	Inner Ø	Split ball
----------------------	----------------------	--------	---------------	---------	------------

- Material:**
Housing: RN33 ▶ Page 1498
Spherical ball: iglidur® J ▶ Page 141

- Lifetime calculation online**
▶ www.igus.eu/igubal-expert

- Low installation space and low weight
- High stiffness and durability
- Predictable service life
- Dimensional series K according to standard DIN ISO 12240

Technical data

Part No.	Max. radial tensile/ compressive strength		Max. axial tensile/ compressive strength		Maximum tightening torque		Weight [g]
	Short-term	Long-term	Short-term	Long-term	through ball	fixing holes	
	[N]	[N]	[N]	[N]	[Nm]	[Nm]	
KSTM-GT35 ²³⁾	11,000	5,500	2,500	1,250	5	15	250.3
KSTM-GT40	11,000	5,500	2,500	1,250	5	15	235.0
KSTM-GT40-GT ²⁴⁾	11,000	5,500	2,500	1,250	5	15	235.0
KSTM-GT45 ²³⁾	15,000	7,500	3,000	1,500	5	20	405.2
KSTM-GT50	15,000	7,500	3,000	1,500	5	20	389.2
KSTM-GT50-GT ²⁴⁾	15,000	7,500	3,000	1,500	5	20	389.2

Dimensions [mm]

Part No.	d1	d3	h	h1	h2	SW	a	m	C1	B	Max. pivot angle
	E10										
KSTM-GT35 ²³⁾	35.0	13.5	79.0	39.5	12.6	19.0	120.5	91.0	29.5	48.5	24°
KSTM-GT40	40.0	13.5	79.0	39.5	12.6	19.0	120.5	91.0	29.5	48.5	24°
KSTM-GT40-GT ²⁴⁾	40.0	13.5	79.0	39.5	12.6	19.0	120.5	91.0	29.5	48.5	24°
KSTM-GT45 ²³⁾	45.0	13.5	100.0	50.0	12.6	19.0	149.0	114.0	35.0	60.0	24°
KSTM-GT50	50.0	13.5	100.0	50.0	12.6	19.0	149.0	114.0	35.0	60.0	24°
KSTM-GT50-GT ²⁴⁾	50.0	13.5	100.0	50.0	12.6	19.0	149.0	114.0	35.0	60.0	24°

²³⁾ Diameter given by iglidur® J bore reducer; ²⁴⁾ Split pillow block with split ball