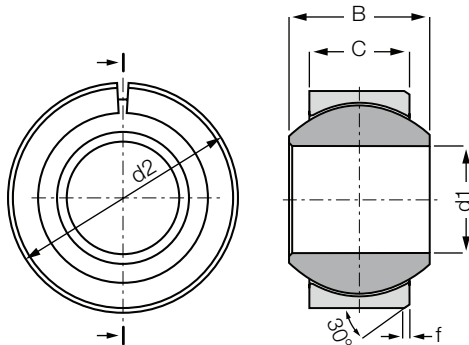


Pressfit spherical bearing: KGLM Low Cost



- Variety of ball materials
- Easy to install
- Low-cost
- Split housing



Order key

Type Size Version

K GL M - 05 - LC

Dimensional series K	Pressfit spherical bearing	Metric	Inner-Ø [mm]	Low Cost
----------------------	----------------------------	--------	--------------	----------



Material:

Housing: **igumid G** ▶ Page 1235

Spherical balls: **iglidur® W300** ▶ Page 121

Other spherical balls on request ▶ Page 693

Technical data

Part No.	Max. static compressive strength (short term)		Weight [g]
	radial [N]	axial ²⁹⁾ [N]	
KGLM-05 LC	1,300	500	1.0
KGLM-10 LC	4,000	1,400	4.3
KGLM-12 LC	5,400	1,500	6.9
KGLM-16 LC	8,000	3,000	12.7
KGLM-18 LC	9,000	4,000	16.6
KGLM-20 LC	10,000	5,000	23.6
KGLM-25 LC	13,600	7,500	38.9
KGLM-30 LC	20,000	9,000	61.0

²⁹⁾ The maximum static axial load is determined in a remote location hole

Dimensions [mm]

Part No.	d1 E10	d2 ³⁰⁾	B	C	f	Max. pivot angle
KGLM-05 LC	5	13.0	8	6.0	0.8	30°
KGLM-10 LC	10	22.0	14	10.5	0.8	25°
KGLM-12 LC	12	26.0	16	12	0.8	25°
KGLM-16 LC	16	32.0	21	15	0.8	23°
KGLM-18 LC	18	35.0	23	16.5	0.8	23°
KGLM-20 LC	20	40.0	25	18	0.8	23°
KGLM-25 LC	25	47.0	31	22	0.8	22°
KGLM-30 LC	30	55.0	37	25	1.0	22°

³⁰⁾ Pressfitted