

Clevis joint: GERM and GELM



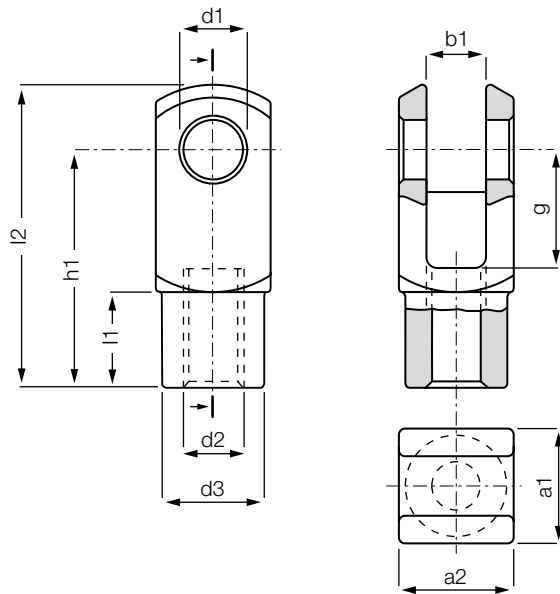
- Light weight
- High strength under impact loads
- Corrosion resistance
- High tensile strength
- Can be used in combination with series E rod ends
- Vibration-dampening
- Noise-dampening
- Available in left- (GELM) and right-hand-thread (GERM)

Technical data

Part No.		Max. static tensile strength		Max. static radial load		Max. torque strength	Weight
		Short term	Long term	Short term	Long term		
Right-hand thread	Left-hand thread	[N]	[N]	[N]	[N]	[Nm]	[g]
GERM-04 M3.5	GELM-04 M3.5	650	325	250	125	0.4	0.9
GERM-04	GELM-04	650	325	250	125	0.4	0.9
GERM-05 DIN M4	GELM-05 DIN M4	1,000	500	250	125	0.4	1.5
GERM-05 DIN M5	GELM-05 DIN M5	1,000	500	250	125	0.5	1.5
GERM-05	GELM-05	1,200	600	250	125	0.5	2.7
GERM-05 DIN M5 LS²²⁾	GELM-05 DIN M5 LS²²⁾	1,000	500	130	65	0.5	2.3
GERM-06	GELM-06	1,400	700	300	150	1.5	2.5
GERM-06 LS²²⁾	GELM-06 LS²²⁾	1,400	700	130	65	1.5	3.6
GERM-08	GELM-08	2,700	1,350	650	325	5	6.3
GERM-10	GELM-10	4,700	2,350	800	400	15	13.2
GERM-10 F	GELM-10 F	4,700	2,350	800	400	6	13.2
GERM-12	GELM-12	5,700	2,850	900	450	20	20.2
GERM-12 F	GELM-12 F	5,700	2,850	900	450	15	20.2
GERM-14	GELM-14	6,600	3,300	1,000	500	25	29.9
GERM-14 F	GELM-14 F	6,600	3,300	1,000	500	20	29.9
GERM-15	GELM-15	3,200	1,600	1,000	500	25	30
GERM-16	GELM-16	7,500	3,750	1,200	600	30	49.9
GERM-16 F	GELM-16 F	7,500	3,750	1,200	600	27.5	49.9
GERM-17	GELM-17	3,600	1,800	1,200	600	30	50
GERM-17 F	GELM-17 F	3,600	1,800	1,200	600	27.5	50
GERM-20	GELM-20	9,500	4,750	3,000	1,500	60	105
GERM-20 M20	GELM-20 M20	9,500	4,750	3,000	1,500	80	105

²²⁾ LS = longer shank

Clevis joint: GERM and GELM



Order key

Type	Size	Options
------	------	---------

G E ... M - 04

Clevis joint	Dimensional series E	Thread	Metric	Inner-Ø [mm]
--------------	----------------------	--------	--------	--------------

Thread

L = left-hand thread

R = right-hand thread



Material:

igumid G ► Page 1235

Dimensions [mm]

Part No.	d1	g	a1	a2	b1	d2	d3	l2	h1	l1	
	+0.1	h11	+0.3	+0.3	B13	Thread tolerance 6H	+0.3	+0.5	+0.3	+0.2	
Right-hand thread			-0.16	-0.16			-0.3	-0.5	-0.3	-0.2	
GERM-04 M3.5	GELM-04 M3.5	4	8	8	8	4	M3.5	8.0	21.0	16.0	6.0
GERM-04	GELM-04	4	8	8	8	4	M04	8.0	21.0	16.0	6.0
GERM-05 DIN M4	GELM-05 DIN M4	5	10	10	10	5	M04	9.0	24.5	20.0	7.5
GERM-05 DIN M5	GELM-05 DIN M5	5	10	10	10	5	M05	9.0	24.5	20.0	7.5
GERM-05	GELM-05	5	12	12	12	6	M05	10.0	31.0	24.0	9.0
GERM-05 DIN M5 LS ²²⁾	GELM-05 DIN M5 LS ²²⁾	5	20	10	10	5	M05	9.0	36.0	30.0	7.5
GERM-06	GELM-06	6	12	12	12	6	M06	10.0	31.0	24.0	9.0
GERM-06 LS ²²⁾	GELM-06 LS ²²⁾	6	24	12	12	6	M06	10.0	43.0	36.0	9.0
GERM-08	GELM-08	8	16	16	16	8	M08	14.0	42.0	32.0	12.0
GERM-10	GELM-10	10	20	20	20	10	M10	18.0	52.0	40.0	15.0
GERM-10 F	GELM-10 F	10	20	20	20	10	M10 x 1.25	18.0	51.3	40.0	15.0
GERM-12	GELM-12	12	24	24	24	12	M12	20.0	61.3	48.0	18.0
GERM-12 F	GELM-12 F	12	24	24	24	12	M12 x 1.25	20.0	61.3	48.0	18.0
GERM-14	GELM-14	14	28	27	27	14	M14	24.0	71.3	56.0	22.5
GERM-14 F	GELM-14 F	14	28	27	27	14	M14 x 1.5	24.0	71.3	56.0	22.5
GERM-15	GELM-15	15	28	27	27	14	M14	24.0	71.3	56.0	22.5
GERM-16	GELM-16	16	32	32	32	16	M16	26.0	81.9	64.0	24.0
GERM-16 F	GELM-16 F	16	32	32	32	16	M16 x 1.5	26.0	81.9	64.0	24.0
GERM-17	GELM-17	17	32	32	32	16	M16	26.0	83.0	64.0	24.0
GERM-17 F	GELM-17 F	17	32	32	32	16	M16 x 1.5	26.0	83.0	64.0	24.0
GERM-20	GELM-20	20	40	40	40	20	M20 x 1.5	34.0	105.0	80.0	30.0
GERM-20 M20	GELM-20 M20	20	40	40	40	20	M20 x 2.5	34.0	105.0	80.0	30.0

²²⁾ LS = longer shank

Clevis joints with clevis pin and circlip:
GERMK and GELMK



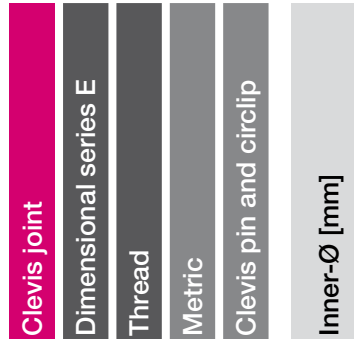
- Light weight
- Corrosion resistance
- High tensile strength
- Can be used in combination with series E rod ends



Order key

Type Size Options

G E ... M K - 04



Thread

L = left-hand thread

R = right-hand thread



Material:

igumid G ► Page 1235

Technical data

Part No.		Max. static tensile strength		Max. static radial load		Weight [g]
		Short term	Long term	Short term	Long term	
Right-hand thread	Left-hand thread	[N]	[N]	[N]	[N]	[g]
GERMK-04 M3.5	GELMK-04 M3.5	500	250	250	125	1.3
GERMK-04	GELMK-04	500	250	250	125	1.3
GERMK-05 DIN M4	GELMK-05 DIN M4	800	400	250	125	2.1
GERMK-05 DIN M5	GELMK-05 DIN M5	800	400	250	125	2.1
GERMK-05	GELMK-05	900	450	250	125	3.3
GERMK-05 DIN M5 LS ²²⁾	GELMK-05 DIN M5 LS ²²⁾	800	400	130	65	2.9
GERMK-06	GELMK-06	1,300	650	300	150	3.3
GERMK-06 LS ²²⁾	GELMK-06 LS ²²⁾	1,300	650	130	65	4.4
GERMK-08	GELMK-08	2,100	1,050	650	325	7.9
GERMK-10	GELMK-10	3,000	1,500	800	400	16.4
GERMK-10 F	GELMK-10 F	3,000	1,500	800	400	16.4
GERMK-12	GELMK-12	3,500	1,750	900	450	25.3
GERMK-12 F	GELMK-12 F	3,500	1,750	900	450	25.3
GERMK-14	GELMK-14	6,100	3,050	1,000	500	31.2
GERMK-15	GELMK-15	2,800	1,400	1,000	500	38.9
GERMK-16	GELMK-16	7,000	3,500	1,200	600	60.8
GERMK-16 F	GELMK-16 F	7,000	3,500	1,200	600	60.8
GERMK-17	GELMK-17	3,600	1,800	1,200	600	62.3
GERMK-17 F	GELMK-17 F	3,600	1,800	1,200	600	62.3
GERMK-20	GELMK-20	9,000	4,500	3,000	1,500	125.2
GERMK-20 M20	GELMK-20 M20	9,000	4,500	3,000	1,500	125.2

²²⁾ LS = longer shank



Single components: clevis pin

GBM and circlip GSR

► Page 641