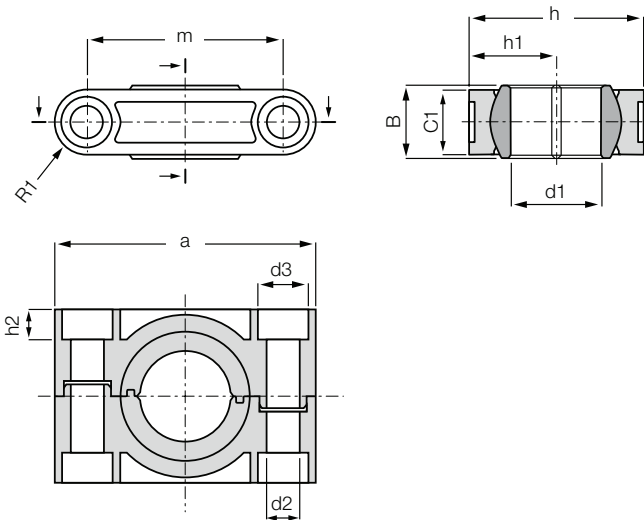


Pillow block bearing with split housing and split ball: ESTM-GT...-GT



Order key

Type	Size [mm]	Version
------	-----------	---------

E S T M - G T 1 6 - G T

Dimensional series E	Pillow block bearing	Metric	Split housing	Inner Ø	Split ball
----------------------	----------------------	--------	---------------	---------	------------

i **Material:**
Housing: RN33 ► [Page 1498](#)
Spherical ball: iglidur® J ► [Page 141](#)

- Save time during assembly and disassembly
- Low installation space and low weight
- High stiffness and durability
- Spherical ball material iglidur® J for low moisture absorption
- Ideal for outdoor use
- Dimensional series E according to DIN ISO 12240
- Adapter available ► [Accessories, page 781](#)

Technical data

Part No.	Max. static radial load		Max. static radial compressive force		Max. tightening torque fixing holes	Weight [g]
	Short-term	Long-term	Short-term	Long-term		
	[N]	[N]	[N]	[N]		
ESTM-GT16-GT	2,500	1,250	8,500	4,250	4.5	18.0
ESTM-GT20-GT	5,000	2,500	11,000	5,750	4.5	28.0
ESTM-GT25-GT	5,000	2,500	18,500	9,250	10.5	52.0
ESTM-GT30-GT	5,000	2,500	16,500	8,250	10.5	84.0

Dimensions [mm]

Part No.	d1	d2	d3	h	h1	h2	a	m	C1	B	R1	Max. pivot angle
	E10											
ESTM-GT16-GT	16.0	6.6	10.6	34.0	17.0	6.4	50.0	37.0	13.0	13.0	6.5	22°
ESTM-GT20-GT	20.0	9.0	14.0	40.0	20.0	8.6	62.0	46.0	16.0	16.0	8.0	22°
ESTM-GT25-GT	25.0	9.0	14.0	48.0	24.0	8.6	72.0	54.0	18.0	20.0	9.0	22°
ESTM-GT30-GT	30.0	11.0	17.0	56.0	28.0	10.6	86.0	64.0	22.0	22.0	11.0	22°