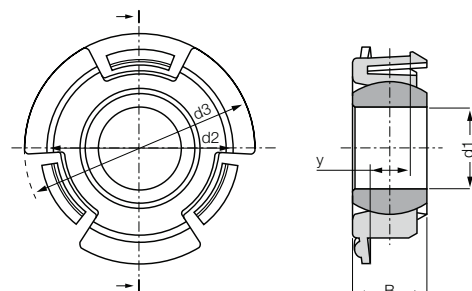


## Self-aligning clip bearing: ECLM-HD



- High axial and radial loads
- Adjustment of axial and radial clearance by preloading
- Very easy installation by simply snap into sheet metal

## Order key

Type	Size [mm]	Version
------	-----------	---------

**E CL M - 08 - 04 - HD**

Dimensional series E	Self-aligning clip bearing	Metric	Inner-Ø d1	Metal sheet thickness	Heavy Duty
----------------------	----------------------------	--------	------------	-----------------------	------------

- i Material:**  
 Housing: **igumid G** ▶ Page 1496  
 Spherical ball: **iglidur® W300** ▶ Page 153  
 Other spherical balls upon request  
 ▶ Page 763

- No additional axial fastening necessary
- For plate thickness 4.0–8.0 mm

## Technical data

Part No.	Max. static compressive strength (short-term)		Max. static compressive strength (long-term)		Weight [g]
	radial [N]	axial [N]	radial [N]	axial [N]	
ECLM-08-04-HD	1,750	125	875	60	2.0
ECLM-10-05-HD	2,500	150	1,250	75	3.1
ECLM-12-06-HD	3,500	175	1,750	85	3.8
ECLM-16-08-HD	4,500	250	2,250	125	7.0
ECLM-20-08-HD	6,000	330	3,000	165	12.0

## Dimensions [mm]

Part No.	d1 E10	B	d2 ±0.15	d3	y ±0.1	Max. pivot angle
ECLM-08-04-HD	8.0	8.0	18.0	25	4.0	28°
ECLM-10-05-HD	10.0	9.0	22.0	28	5.0	24°
ECLM-12-06-HD	12.0	10.0	24.0	32	6.0	24°
ECLM-16-08-HD	16.0	13.0	30.0	38	8.0	22°
ECLM-20-08-HD	20.0	16.0	36.0	44	8.0	21°

## Spherical ball materials to choose ▶ Page 763



REM:  
low-cost



JEM:  
low moisture  
absorption



J4EM:  
low-cost  
and low moisture  
absorption



J4VEM:  
clearance free  
preloaded  
spherical ball