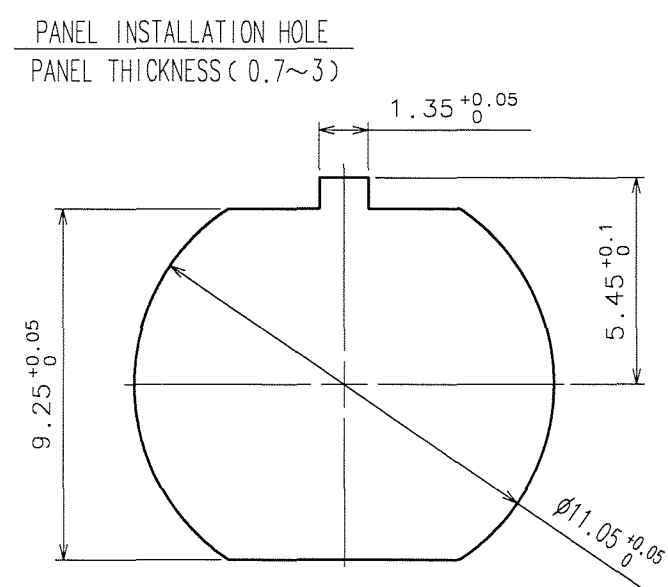
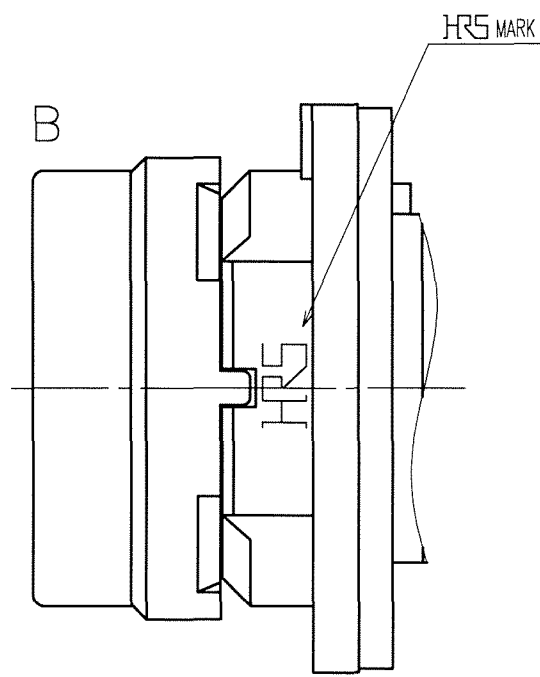
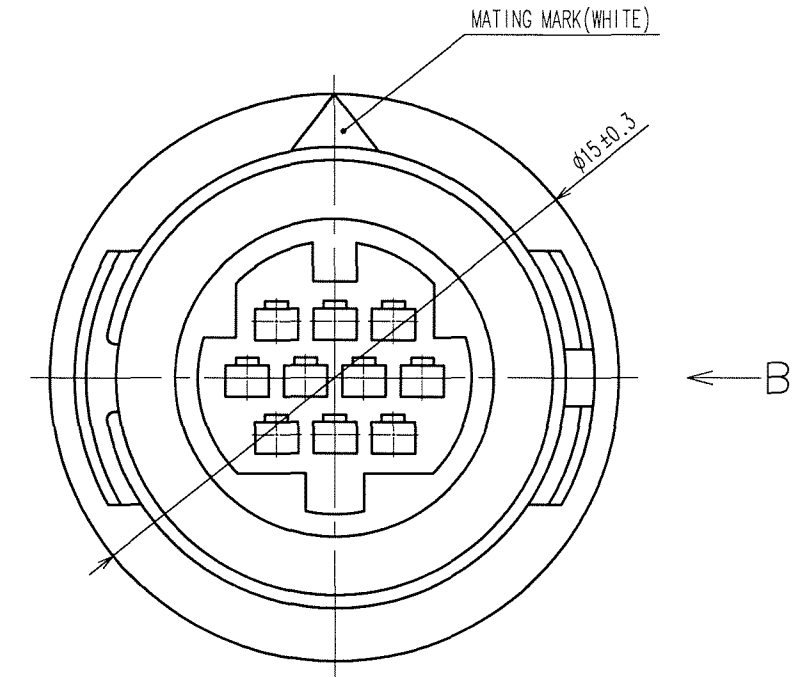
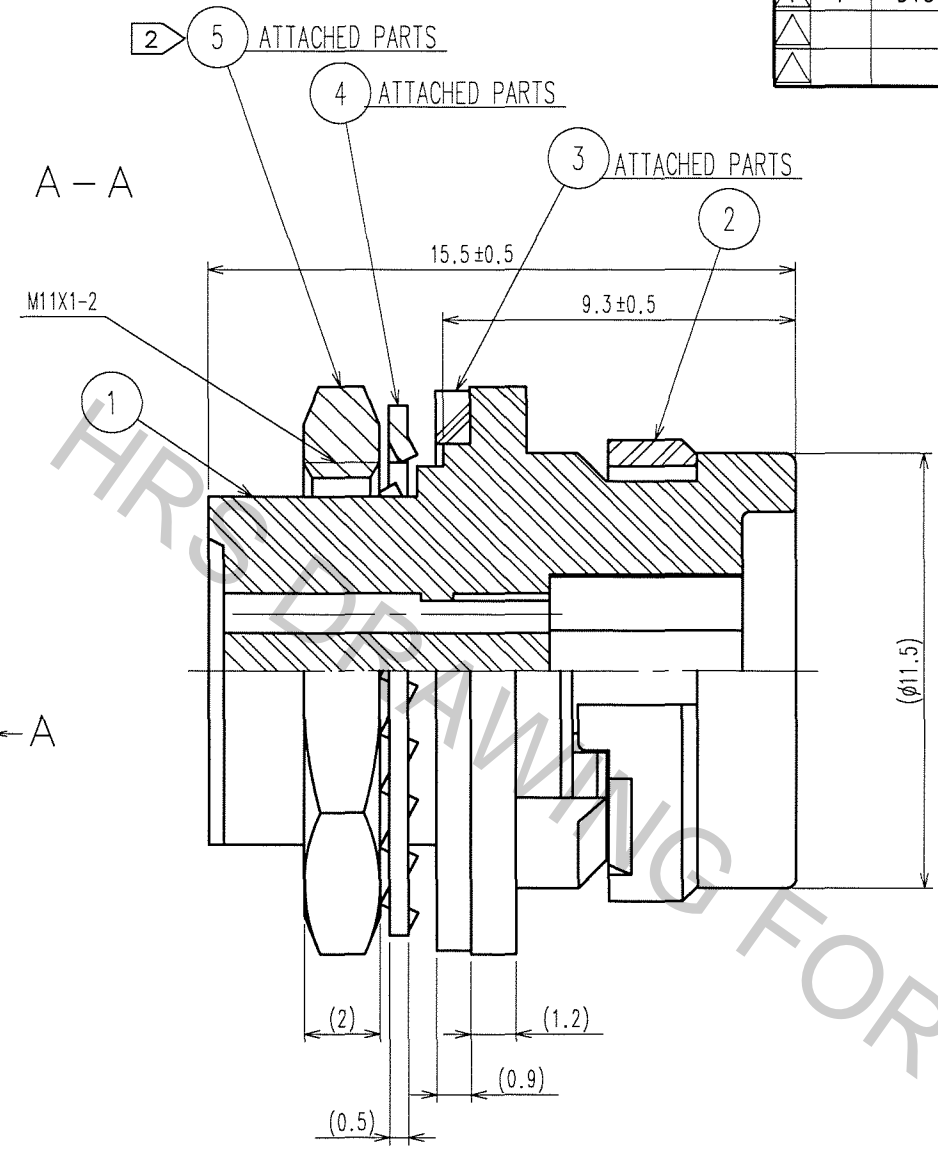
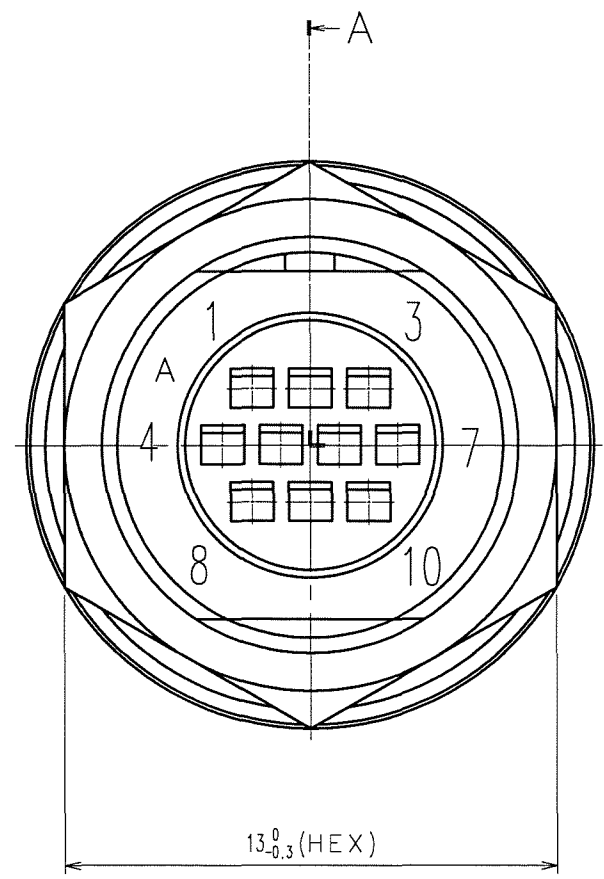


Jan.1.2017 Copyright 2017 HIROSE ELECTRIC CO., LTD. All Rights Reserved.

COUNT	DESCRIPTION OF REVISIONS	BY	CHKD	DATE	COUNT	DESCRIPTION OF REVISIONS	BY	CHKD	DATE
1	DIS-C-000585	T.K	E.K	07.07.27					



NOTES 1 APPLICABLE CRIMPING CONTACT:HR30-PC-211
 (APPLICABLE WIRE: 26~30 AWG WIRE JACKET DIAMETER:φ1 MAX)
 APPLICABLE CRIMP CONTACT EXTRACTION TOOL:HR30-TP
 2 THE RECOMMENDED CLUMP TORQUE OF REF. NO.⑤ TO BE 0.8N·m.
 LOCTITE 271, LOCPRIMER 7649, ROCTITE JAPAN IS RECOMMENDED TO PREVENT REF. NO.⑤ FROM LOOSENING.

NO.	MATERIAL	FINISH, REMARKS	NO.	MATERIAL	FINISH, REMARKS
3	CR	(BLACK)			
2	PPS	(BLACK)	5	BRASS	NICKEL PLATING
1	PPS	(BLACK)	4	PHOSPHOR BRONZE	NICKEL PLATING

CODE NO. (OLD)	DRAWN	DESIGNED	CHECKED	APPROVED	RELEASED
	M.HANYU	H.NAGANO	E.KUNII	M.SATO	
	'05 8 10	'05 8 10	'05 8 10	'05 8 10	

SCALE 5 : 1	DRAWING NO. EDC3-112154-71	PART NO. HR30-7R-10PC(71)
UNITS mm	HRS HIROSE ELECTRIC CO., LTD	CODE NO. CL130-1012-5-71

TO
R

1/1