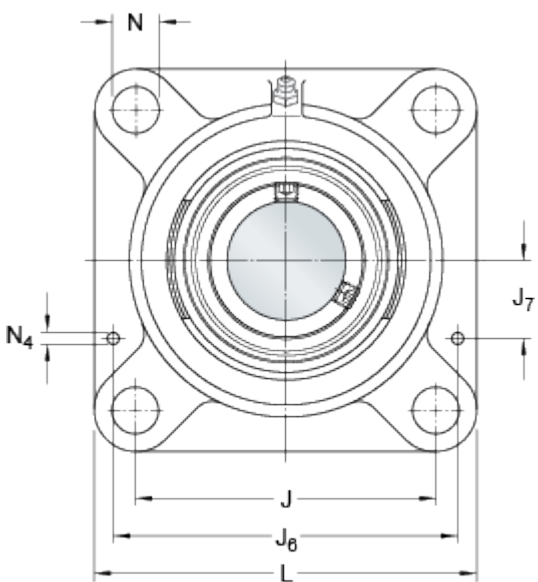
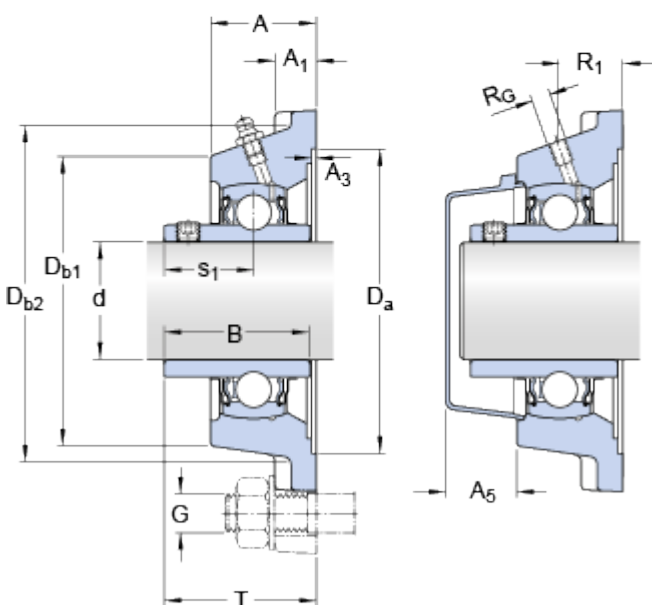
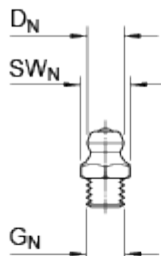


FY 50 TF

Housing material

Cast iron

Dimensions



d	50	mm
A	43	mm
A ₁	15	mm
A ₃	H 3.2	mm
	14	
A ₅	29.5	mm
B	51.6	mm
D _a	H 125.4	mm
	11	
D _{b1}	107	mm
D _{b2}	118	mm
J	111	mm
L	143	mm
N	18	mm
s ₁	32.6	mm
T	60.6	mm

Threaded hole

R_G **1 / 4 - 28 UNF**

28.5 mm

R **1**

Grease fitting

D_N **6.5** mm

SW_N **7** mm

G_N **1 / 4 - 28 SAE-LT**

Dowel pins

J₆ **129** mm

J₇ **35.5** mm

N₄ **4** mm

Calculation data

Basic dynamic load rating C **35.1** kN

Basic static load rating C₀ **23.2** kN

Fatigue load limit P_u **0.98** kN

Limiting speed **4000** r/min

(with shaft tolerance h 6)

Mass

Mass bearing unit **2.2** kg

Mounting information

Thread grub screw G₂ **M 10 x 1**

Hexagonal key size for grub screw N **5** mm

Recommended tightening torque for grub screw **16.5** N·m

Recommended diameter for attachment bolts, mm G **16** mm

Recommended diameter for attachment bolts, inch G **0.625** in

Appertaining products

Housing FY 510 M

Bearing YAR 210-2F

Appropriate products

End cover ECY 210

