

AC Filter, High Symmetrical Attenuation

new



Bolt and nut M4 Case PK

Quick connect terminals 6.3x0.8 mm Case PG

Wire leads Case PI

See below:
[Approvals and Compliances](#)

Description

- Line-filter in standard version
- 1-stage
- high attenuation
- 3 designs
 - N) excellent symmetrical noise attenuation
 - P) high symmetrical noise attenuation
 - Q) standard symmetrical noise attenuation

Unique Selling Proposition

- Excellent symmetrical attenuation
- Compact and cost optimized
- Completely closed steel housing
- Optional wire leads

Characteristics

- Compact filter with high symmetrical attenuation
- Designed for universal industrial applications
- Especially designed for applications with symmetrical noise caused by switching semiconductors
- Suitable for use in equipment according to IEC/UL 60950
- Suitable for use in medical equipment according to IEC/UL 60601-1

Other versions on request

- Version with wire connection
- Version with varistor for overvoltage protection

Weblinks

[pdf data sheet](#), [html datasheet](#), [General Product Information](#), [Distributor-Stock-Check](#), [Detailed request for product](#), [Microsite](#)

Technical Data

Ratings IEC	1 - 60A @ Ta 40 °C / 250VAC; 50Hz
Ratings UL/CSA	1 - 60A @ Ta 40 °C / 125/250VAC; 60Hz
Leakage Current	industrial < 1 mA (250V / 60Hz)
Dielectric Strength	> 1.7 kVDC between L-N > 2.7 kVDC between L/N-PE Test voltage (2 sec)
Allowable Operation Temperature	-40°C to 100°C
Climatic Category	40/100/21 acc. to IEC 60068-1
Protection Class	Suitable for appliances with protection class I acc. to IEC 61140
Terminal	Quick connect terminal 6.3 x 0.8 mm Bolt and nut
Material: Housing	Metal

Line Filter	Standard, medical and industrial version, IEC 60939, UL 1283, CSA C22.2 no. 8 Technical Details
MTBF	> 200'000h acc. to MIL-HB-217 F

Approvals and Compliances

Detailed information on product approvals, code requirements, usage instructions and detailed test conditions can be looked up in [Details about Approvals](#)

SCHURTER products are designed for use in industrial environments. They have approvals from independent testing bodies according to national and international standards. Products with specific characteristics and requirements such as required in the automotive sector according to IATF 16949, medical technology according to ISO 13485 or in the aerospace industry can be offered exclusively with customer-specific, individual agreements by SCHURTER.







Approvals

The approval mark is used by the testing authorities to certify compliance with the safety requirements placed on electronic products. Approval Reference Type: FMAB NEO

Approval Logo	Certificates	Certification Body	Description
	VDE Approvals	VDE	Certificate Number: 40041643
	UL Approvals	UL	UL File Number: E72928

Product standards

Product standards that are referenced

Organization	Design	Standard	Description
	Designed according to	IEC 60320-1	Appliance couplers for household and similar general purposes
	Designed according to	IEC 60939	Passive filters for suppressing electromagnetic interference
	Designed according to	UL 498	Standard for Attachment Plugs and Receptacles
	Designed according to	UL 1283	Electromagnetic interference filters
	Designed according to	CSA C22.2 no. 42	General Use Receptacles, Attachment Plugs, and Similar Wiring Devices
	Designed according to	CSA C22.2 no. 8	Electromagnetic interference (EMI) filters





Application standards

Application standards where the product can be used

Organization	Design	Standard	Description
	Designed for applications acc.	IEC/UL 60950	IEC 60950-1 includes the basic requirements for the safety of information technology equipment.

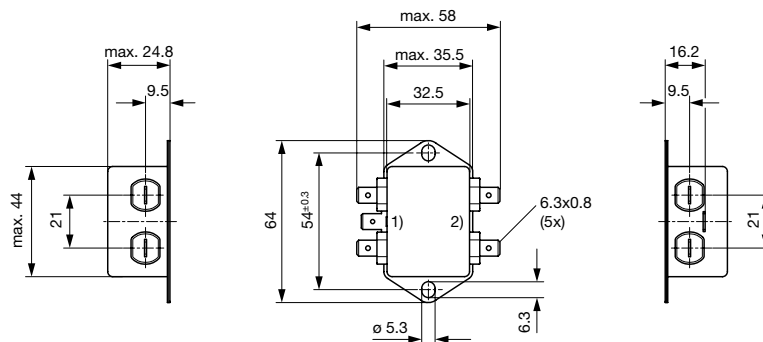
Compliances

The product complies with following Guide Lines

Identification	Details	Initiator	Description
	CE declaration of conformity	SCHURTER AG	The CE marking declares that the product complies with the applicable requirements laid down in the harmonisation of Community legislation on its affixing in accordance with EU Regulation 765/2008.
	RoHS	SCHURTER AG	Directive RoHS 2011/65/EU, Amendment (EU) 2015/836
	China RoHS	SCHURTER AG	The law SJ / T 11363-2006 (China RoHS) has been in force since 1 March 2007. It is similar to the EU directive RoHS.
	REACH	SCHURTER AG	On 1 June 2007, Regulation (EC) No 1907/2006 on the Registration, Evaluation, Authorization and Restriction of Chemicals 1 (abbreviated as "REACH") entered into force.

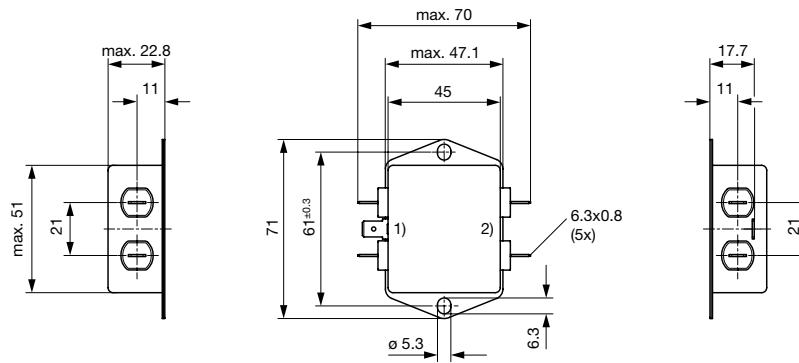
Dimension [mm]

Case PG with quick connect terminals



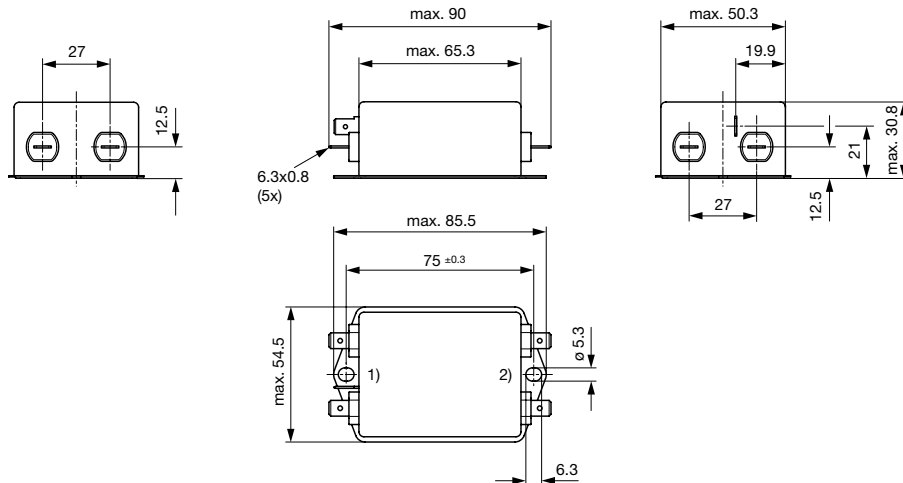
- 1) Line
- 2) Load

Case PH with quick connect terminals



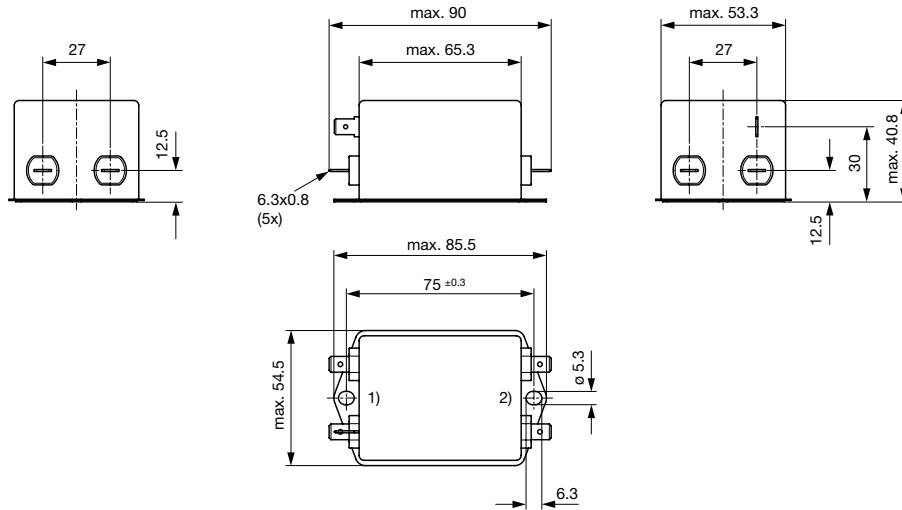
- 1) Line
- 2) Load

Case PI with quick connect terminals



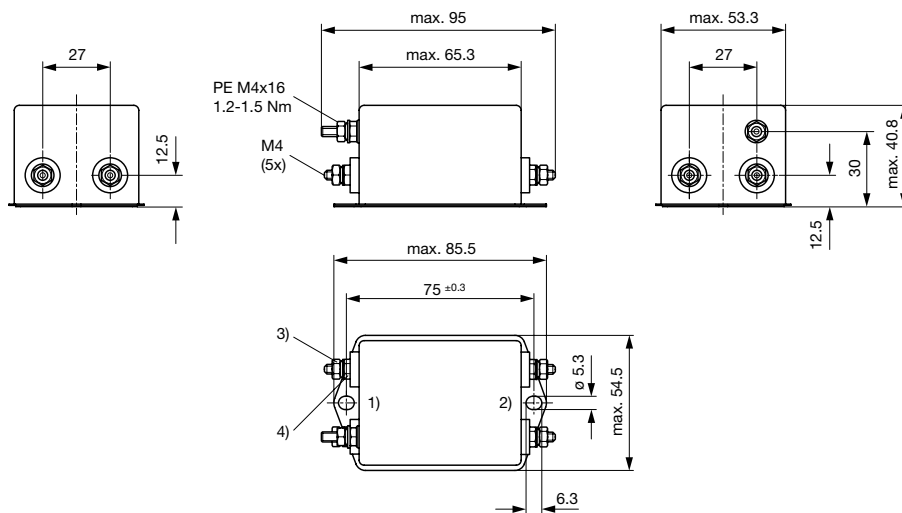
- 1) Line
- 2) Load

Case PK with quick connect terminals



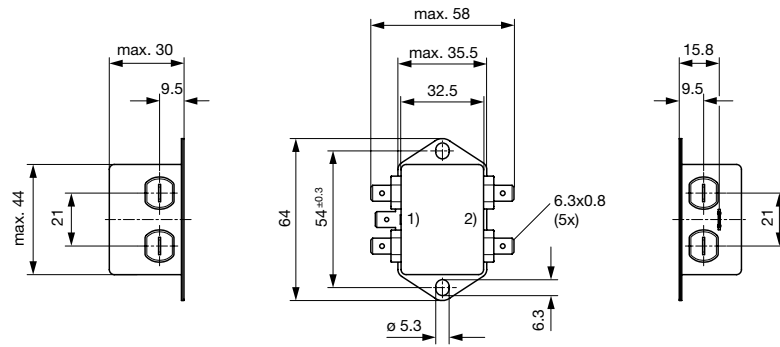
- 1) Line
- 2) Load

Case PK with bolt and nut



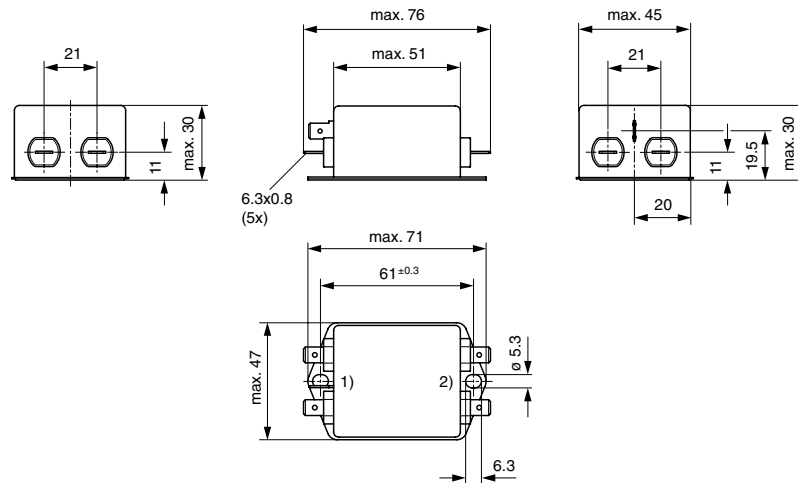
- 1) Line
- 2) Load
- 3) Nut torque 0.8...1 Nm, keep lock-nut fastened
- 4) Lock-nut do not unscrew

Case QC with quick connect terminals



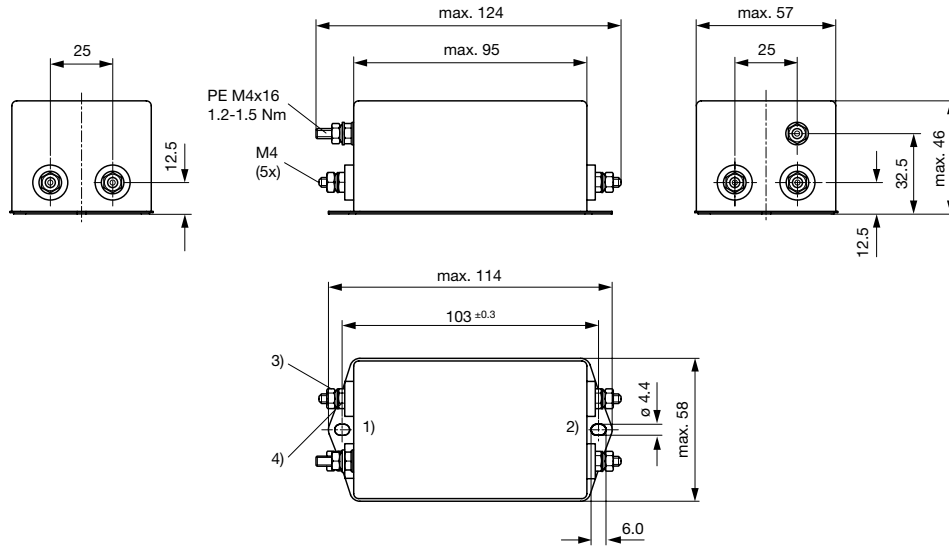
- 1) Line
- 2) Load

Case QD with quick connect terminals



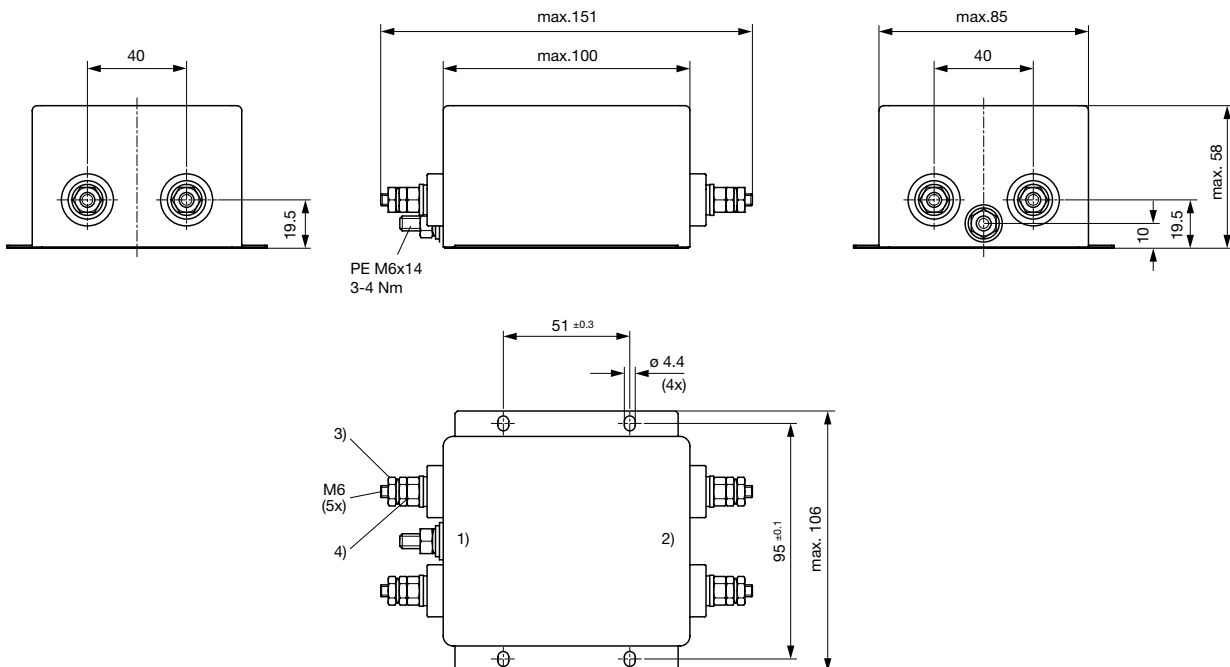
- 1) Line
- 2) Load

Case QE with bolt and nut



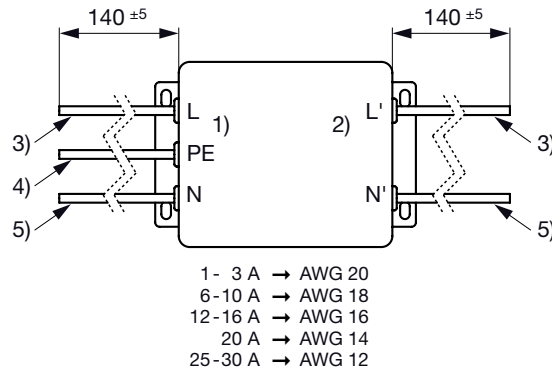
- 1) Line
- 2) Load
- 3) Nut torque 0.8...1 Nm, keep lock-nut fastened
- 4) Lock-nut do not unscrew

Case QF with bolt and nut



- 1) Line
- 2) Load
- 3) Nut torque 3...4 Nm, keep lock-nut fastened
- 4) Do not unscrew lock-nut

Case with wire leads

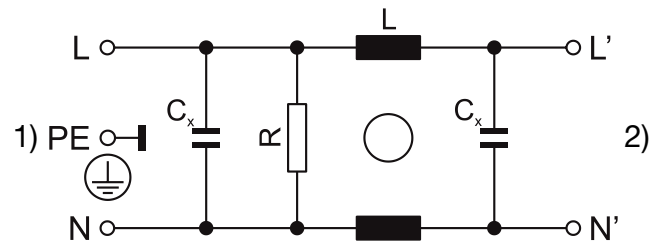
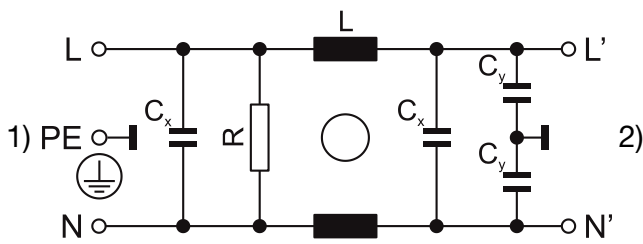


- 1) Line
- 2) Load
- 3) Brown
- 4) Yellow-Green
- 5) Blue

Diagrams

Standard Version or medical M80
 Design N, P

Medical version M5
 Design N, P

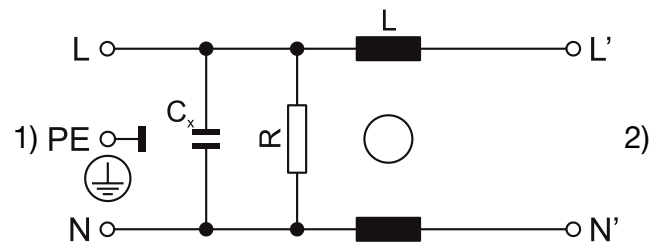
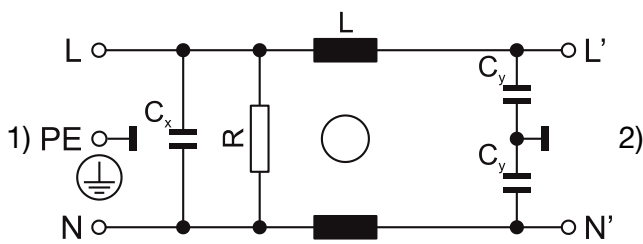


- 1) Line
- 2) Load

- 1) Line
- 2) Load

Standard Version or medical M80
 Design Q

Medical version M5
 Design Q



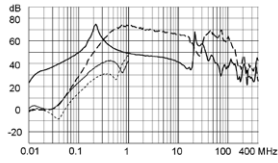
- 1) Line
- 2) Load

- 1) Line
- 2) Load

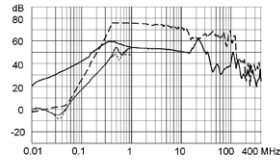
Attenuation Loss 0.1/100Ω differential mode 100/0.1Ω differential mode - - - - 50Ω differential mode ____ 50Ω common mode

Standard version

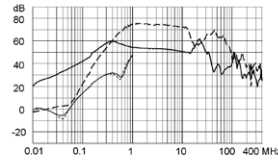
1 A / Design N



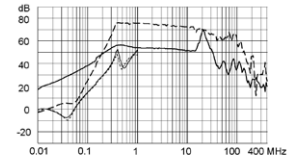
3 A / Design N



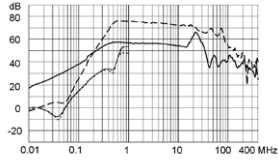
4 A / Design N



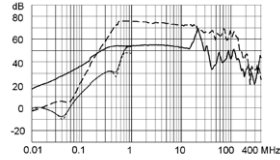
6 A / Design N



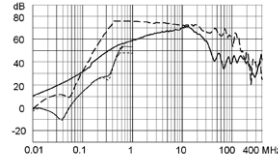
8 A / Design N



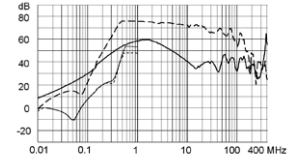
10 A / Design N



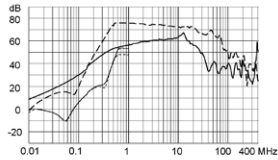
12 A / Design N



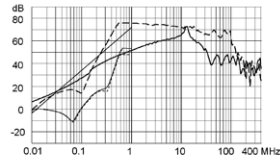
16 A / Design N



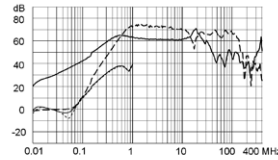
20 A / Design N



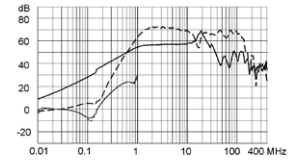
30 A / Design N



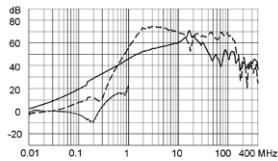
1 A / Design P



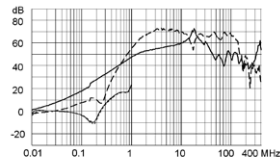
3 A / Design P



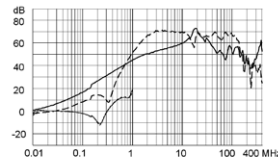
6 A / Design P



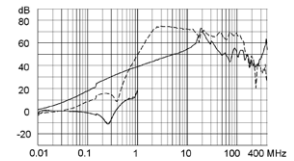
10 A / Design P



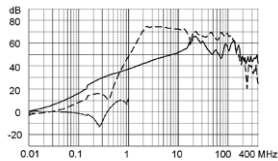
12 A / Design P



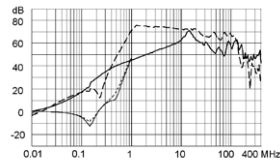
16 A / Design P



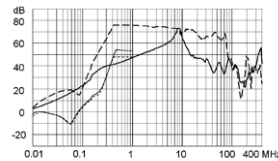
20 A / Design P



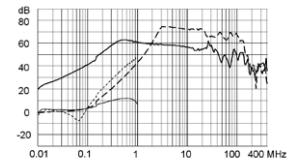
30 A / Design P



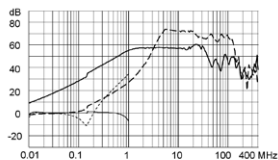
60 A / Design P



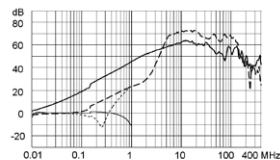
1 A / Design Q



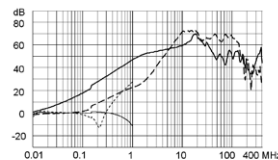
3 A / Design Q



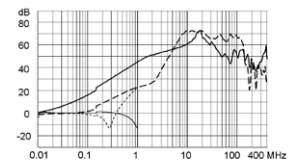
6 A / Design Q



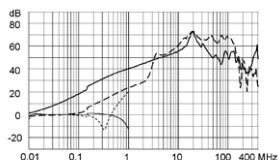
10 A / Design Q



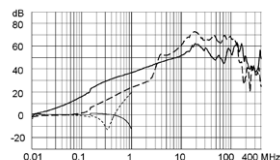
12 A / Design Q



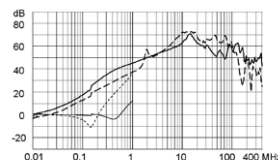
16 A / Design Q



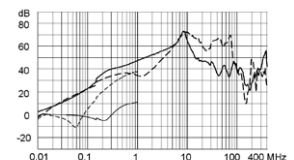
20 A / Design Q



30 A / Design Q

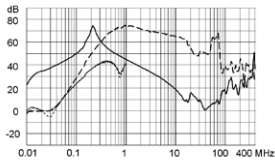


60 A / Design Q

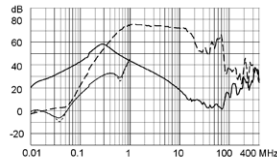


Medical version (M5)

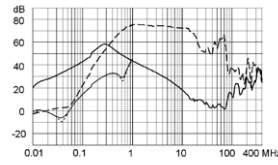
1 A / Design N



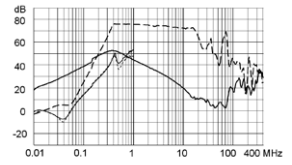
3 A / Design N



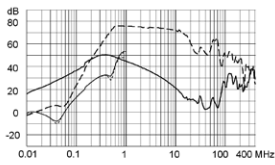
4 A / Design N



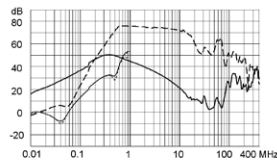
6 A / Design N



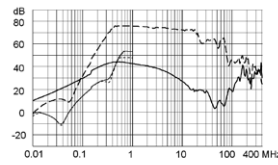
8 A / Design N



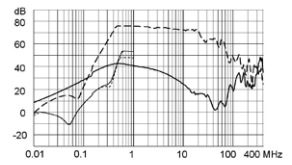
10 A / Design N



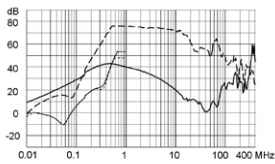
12 A / Design N



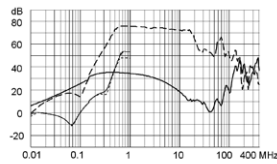
16 A / Design N



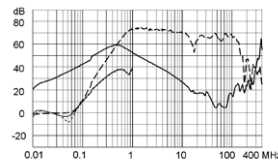
20 A / Design N



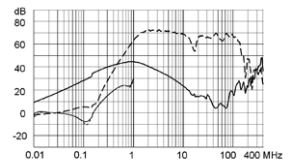
30 A / Design N



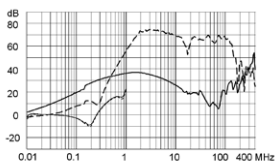
1 A / Design P



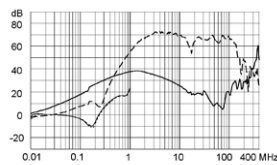
3 A / Design P



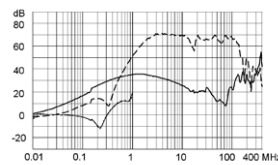
6 A / Design P



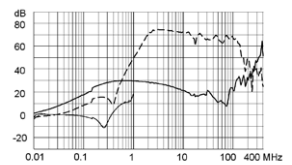
10 A / Design P



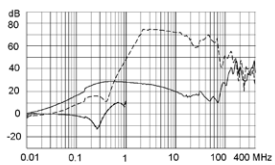
12 A / Design P



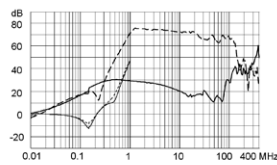
16 A / Design P



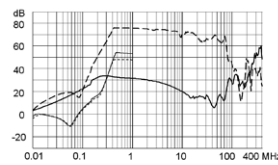
20 A / Design P



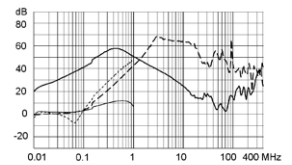
30 A / Design P



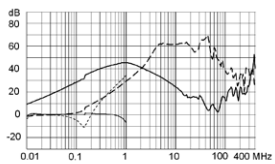
60 A / Design P



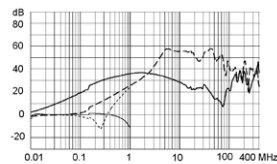
1 A / Design Q



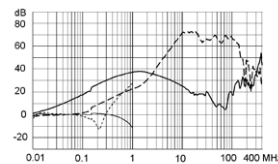
3 A / Design Q



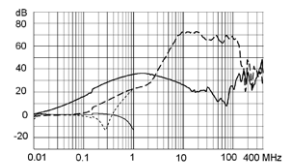
6 A / Design Q



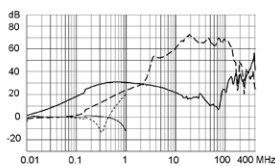
10 A / Design Q



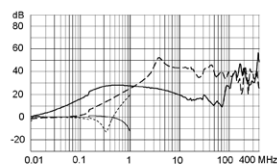
12 A / Design Q



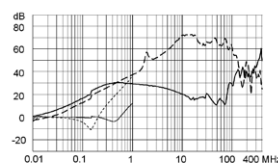
16 A / Design Q



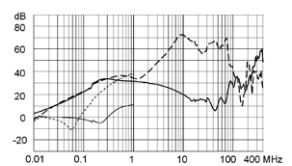
20 A / Design Q



30 A / Design Q

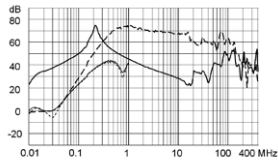


60 A / Design Q

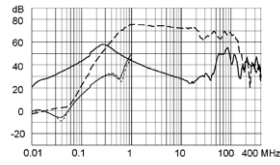


Medical version (M80)

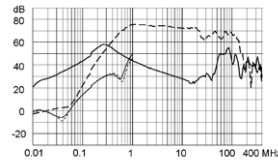
1 A / Design N



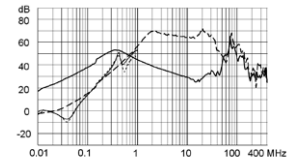
3 A / Design N



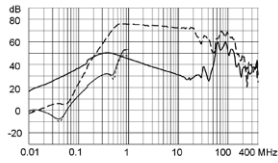
4 A / Design N



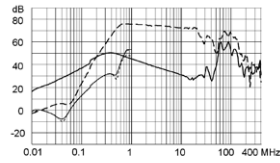
6 A / Design N



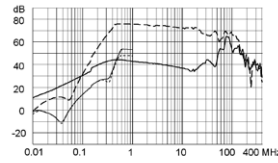
8 A / Design N



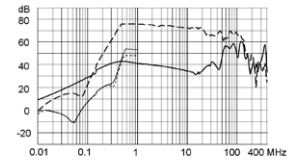
10 A / Design N



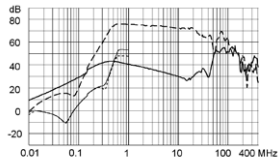
12 A / Design N



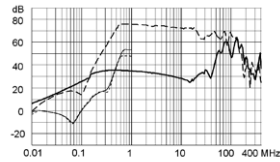
16 A / Design N



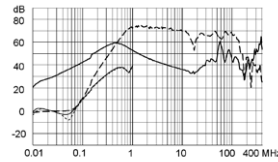
20 A / Design N



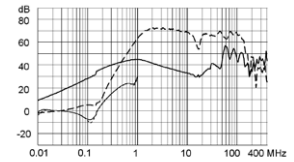
30 A / Design N



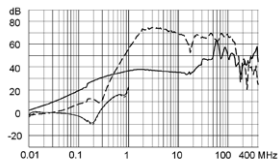
1 A / Design P



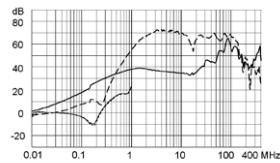
3 A / Design P



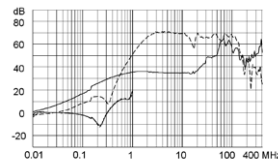
6 A / Design P



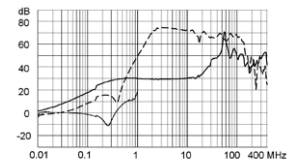
10 A / Design P



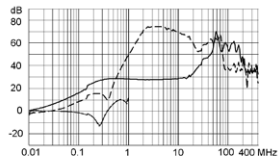
12 A / Design P



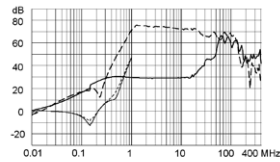
16 A / Design P



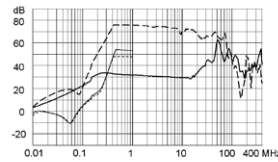
20 A / Design P



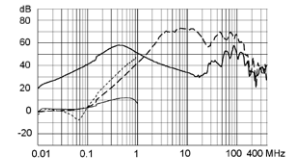
30 A / Design P



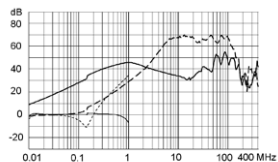
60 A / Design P



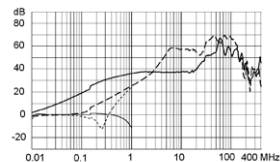
1 A / Design Q



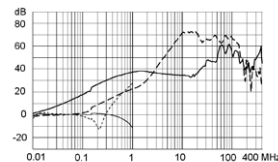
3 A / Design Q



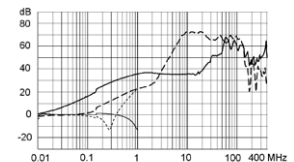
6 A / Design Q



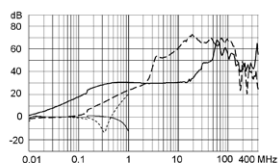
10 A / Design Q



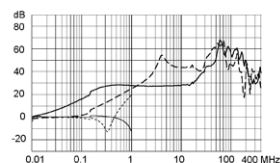
12 A / Design Q



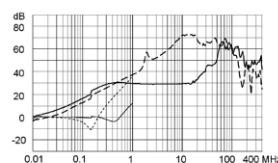
16 A / Design Q



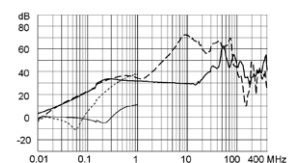
20 A / Design Q



30 A / Design Q



60 A / Design Q



All Variants

Rated current	Filter-Type	Terminal	Design	Lea- kage	Ri	Power Loss	Weight	Housings	Packa- ging	Order Number
[A]				[mA]	[mΩ]	[W]	[g]		[ST]	
1	Standard Version	Quick connect terminal 6.3 x 0.8 mm	N	0.5	475	1	72 g	PG	15	5500.2630.01
1	Standard Version	Quick connect terminal 6.3 x 0.8 mm	P	0.5	320	0.65	80 g	QC	15	5500.2640.01
1	Standard Version	Quick connect terminal 6.3 x 0.8 mm	Q	0.5	320	0.65	66 g	PG	15	5500.2650.01
3	Standard Version	Quick connect terminal 6.3 x 0.8 mm	N	0.5	83	1.5	104 g	PH	15	5500.2631.01
3	Standard Version	Quick connect terminal 6.3 x 0.8 mm	P	0.5	36	0.65	81 g	QC	15	5500.2641.01
3	Standard Version	Quick connect terminal 6.3 x 0.8 mm	Q	0.5	36	0.65	70 g	PG	15	5500.2651.01
4	Standard Version	Quick connect terminal 6.3 x 0.8 mm	N	0.5	53	1.7	108 g	PH	15	5500.2632.01
6	Standard Version	Quick connect terminal 6.3 x 0.8 mm	N	0.5	32.5	2.4	109 g	PH	15	5500.2633.01
6	Standard Version	Quick connect terminal 6.3 x 0.8 mm	P	0.5	12	0.86	80 g	QC	15	5500.2642.01
6	Standard Version	Quick connect terminal 6.3 x 0.8 mm	Q	0.5	12	0.86	100 g	PG	15	5500.2652.01
8	Standard Version	Quick connect terminal 6.3 x 0.8 mm	N	0.5	29.2	3.8	190 g	PI	10	5500.2634.01
10	Standard Version	Quick connect terminal 6.3 x 0.8 mm	P	0.5	5	1	87 g	QC	15	5500.2643.01
10	Standard Version	Quick connect terminal 6.3 x 0.8 mm	Q	0.5	5	1	90 g	QC	15	5500.2653.01
12	Standard Version	Quick connect terminal 6.3 x 0.8 mm	P	0.5	4	1.2	92 g	QC	15	5500.2644.01
12	Standard Version	Quick connect terminal 6.3 x 0.8 mm	Q	0.5	4	1.2	90 g	QC	15	5500.2654.01
16	Standard Version	Quick connect terminal 6.3 x 0.8 mm	P	0.5	2	1	138 g	QD	15	5500.2645.01
16	Standard Version	Quick connect terminal 6.3 x 0.8 mm	Q	0.5	2	1	136 g	QD	15	5500.2655.01
20	Standard Version	Quick connect terminal 6.3 x 0.8 mm	P	0.5	1.9	1.5	206 g	PI	10	5500.2646.01
20	Standard Version	Quick connect terminal 6.3 x 0.8 mm	Q	0.5	1.9	1.5	204 g	PI	10	5500.2656.01
10	Industrial Version	Quick connect terminal 6.3 x 0.8 mm	N	1	22.8	4.6	200 g	PI	10	5500.2635.01
12	Industrial Version	Quick connect terminal 6.3 x 0.8 mm	N	1	13.2	3.8	201 g	PI	10	5500.2636.01
16	Industrial Version	Quick connect terminal 6.3 x 0.8 mm	N	1	7.2	3.7	308 g	PK	10	5500.2637.01
20	Industrial Version	Quick connect terminal 6.3 x 0.8 mm	N	1	6.0	4.8	322 g	PK	10	5500.2638.01
30	Industrial Version	Bolt and nut M4	P	1	1	1.8	450 g	QE	5	5500.2647.03
30	Industrial Version	Bolt and nut M4	Q	1	1	1.8	450 g	QE	5	5500.2657.03
30	Industrial Version	Bolt and nut M4	N	1	2.9	5.2	355 g	PK	10	5500.2639.03
60	Industrial Version	Bolt and nut M6	P	1	1	7.2	1220 g	QF	1	5500.2648.03
60	Industrial Version	Bolt and nut M6	Q	1	1	7.2	1220 g	QF	1	5500.2658.03
1	Medical (M5)	Quick connect terminal 6.3 x 0.8 mm	N	0.005	475	1	72 g	PG	15	5500.2630.04
1	Medical (M5)	Quick connect terminal 6.3 x 0.8 mm	P	0.005	320	0.65	80 g	QC	15	5500.2640.04
1	Medical (M5)	Quick connect terminal 6.3 x 0.8 mm	Q	0.005	320	0.65	66 g	PG	15	5500.2650.04
3	Medical (M5)	Quick connect terminal 6.3 x 0.8 mm	N	0.005	83	1.5	104 g	PH	15	5500.2631.04
3	Medical (M5)	Quick connect terminal 6.3 x 0.8 mm	P	0.005	36	0.65	81 g	QC	15	5500.2641.04
3	Medical (M5)	Quick connect terminal 6.3 x 0.8 mm	Q	0.005	36	0.65	70 g	PG	15	5500.2651.04
4	Medical (M5)	Quick connect terminal 6.3 x 0.8 mm	N	0.005	53	1.7	108 g	PH	15	5500.2632.04
6	Medical (M5)	Quick connect terminal 6.3 x 0.8 mm	N	0.005	32.5	2.4	109 g	PH	15	5500.2633.04
6	Medical (M5)	Quick connect terminal 6.3 x 0.8 mm	P	0.005	12	0.86	80 g	QC	15	5500.2642.04
6	Medical (M5)	Quick connect terminal 6.3 x 0.8 mm	Q	0.005	12	0.86	100 g	PG	15	5500.2652.04
8	Medical (M5)	Quick connect terminal 6.3 x 0.8 mm	N	0.005	29.2	3.8	190 g	PI	10	5500.2634.04
10	Medical (M5)	Quick connect terminal 6.3 x 0.8 mm	N	0.005	22.8	4.6	200 g	PI	10	5500.2635.04
10	Medical (M5)	Quick connect terminal 6.3 x 0.8 mm	P	0.005	5	1	87 g	QC	15	5500.2643.04
10	Medical (M5)	Quick connect terminal 6.3 x 0.8 mm	Q	0.005	5	1	90 g	QC	15	5500.2653.04
12	Medical (M5)	Quick connect terminal 6.3 x 0.8 mm	N	0.005	13.2	3.8	201 g	PI	10	5500.2636.04
12	Medical (M5)	Quick connect terminal 6.3 x 0.8 mm	P	0.005	4	1.2	92 g	QC	15	5500.2644.04
12	Medical (M5)	Quick connect terminal 6.3 x 0.8 mm	Q	0.005	4	1.2	90 g	QC	15	5500.2654.04
16	Medical (M5)	Quick connect terminal 6.3 x 0.8 mm	N	0.005	7.2	3.7	308 g	PK	10	5500.2637.04
16	Medical (M5)	Quick connect terminal 6.3 x 0.8 mm	P	0.005	2	1	138 g	QD	15	5500.2645.04
16	Medical (M5)	Quick connect terminal 6.3 x 0.8 mm	Q	0.005	2	1	136 g	QD	15	5500.2655.04
20	Medical (M5)	Quick connect terminal 6.3 x 0.8 mm	N	0.005	6.0	4.8	322 g	PK	10	5500.2638.04
20	Medical (M5)	Quick connect terminal 6.3 x 0.8 mm	P	0.005	1.9	1.5	206 g	PI	10	5500.2646.04
20	Medical (M5)	Quick connect terminal 6.3 x 0.8 mm	Q	0.005	1.9	1.5	204 g	PI	10	5500.2656.04
30	Medical (M5)	Bolt and nut M4	P	0.005	1	1.8	450 g	QE	5	5500.2647.06
30	Medical (M5)	Bolt and nut M4	Q	0.005	1	1.8	450 g	QE	5	5500.2657.06

Rated current [A]	Filter-Type	Terminal	Design	Lea- kage [mA]	Ri [mΩ]	Power Loss [W]	Weight [g]	Housings	Packa- ging [ST]	Order Number
30	Medical (M5)	Bolt and nut M4	N	0.005	2.9	5.2	355 g	PK	10	5500.2639.06
60	Medical (M5)	Bolt and nut M6	P	0.005	1	7.2	1220 g	QF	1	5500.2648.06
60	Medical (M5)	Bolt and nut M6	Q	0.005	1	7.2	1220 g	QF	1	5500.2658.06
1	Medical (M80)	Quick connect terminal 6.3 x 0.8 mm	N	0.08	475	1	72 g	PG	15	5500.2630.07
1	Medical (M80)	Quick connect terminal 6.3 x 0.8 mm	P	0.08	320	0.65	80 g	QC	15	5500.2640.07
1	Medical (M80)	Quick connect terminal 6.3 x 0.8 mm	Q	0.08	320	0.65	66 g	PG	15	5500.2650.07
3	Medical (M80)	Quick connect terminal 6.3 x 0.8 mm	N	0.08	83	1.5	104 g	PH	15	5500.2631.07
3	Medical (M80)	Quick connect terminal 6.3 x 0.8 mm	P	0.08	36	0.65	81 g	QC	15	5500.2641.07
3	Medical (M80)	Quick connect terminal 6.3 x 0.8 mm	Q	0.08	36	0.65	70 g	PG	15	5500.2651.07
4	Medical (M80)	Quick connect terminal 6.3 x 0.8 mm	N	0.08	53	1.7	108 g	PH	15	5500.2632.07
6	Medical (M80)	Quick connect terminal 6.3 x 0.8 mm	N	0.08	32.5	2.4	109 g	PH	15	5500.2633.07
6	Medical (M80)	Quick connect terminal 6.3 x 0.8 mm	P	0.08	12	0.86	80 g	QC	15	5500.2642.07
6	Medical (M80)	Quick connect terminal 6.3 x 0.8 mm	Q	0.08	12	0.86	100 g	PG	15	5500.2652.07
8	Medical (M80)	Quick connect terminal 6.3 x 0.8 mm	N	0.08	29.2	3.8	190 g	PI	10	5500.2634.07
10	Medical (M80)	Quick connect terminal 6.3 x 0.8 mm	N	0.08	22.8	4.6	200 g	PI	10	5500.2635.07
10	Medical (M80)	Quick connect terminal 6.3 x 0.8 mm	P	0.08	5	1	87 g	QC	15	5500.2643.07
10	Medical (M80)	Quick connect terminal 6.3 x 0.8 mm	Q	0.08	5	1	90 g	QC	15	5500.2653.07
12	Medical (M80)	Quick connect terminal 6.3 x 0.8 mm	N	0.08	13.2	3.8	201 g	PI	10	5500.2636.07
12	Medical (M80)	Quick connect terminal 6.3 x 0.8 mm	P	0.08	4	1.2	92 g	QC	15	5500.2644.07
12	Medical (M80)	Quick connect terminal 6.3 x 0.8 mm	Q	0.08	4	1.2	90 g	QC	15	5500.2654.07
16	Medical (M80)	Quick connect terminal 6.3 x 0.8 mm	N	0.08	7.2	3.7	308 g	PK	10	5500.2637.07
16	Medical (M80)	Quick connect terminal 6.3 x 0.8 mm	P	0.08	2	1	138 g	QD	15	5500.2645.07
16	Medical (M80)	Quick connect terminal 6.3 x 0.8 mm	Q	0.08	2	1	136 g	QD	15	5500.2655.07
20	Medical (M80)	Quick connect terminal 6.3 x 0.8 mm	N	0.08	6.0	4.8	322 g	PK	10	5500.2638.07
20	Medical (M80)	Quick connect terminal 6.3 x 0.8 mm	P	0.08	1.9	1.5	206 g	PI	10	5500.2646.07
20	Medical (M80)	Quick connect terminal 6.3 x 0.8 mm	Q	0.08	1.9	1.5	204 g	PI	10	5500.2656.07
30	Medical (M80)	Bolt and nut M4	P	0.08	1	1.8	450 g	QE	5	5500.2647.09
30	Medical (M80)	Bolt and nut M4	Q	0.08	1	1.8	450 g	QE	5	5500.2657.09
30	Medical (M80)	Bolt and nut M4	N	0.08	2.9	5.2	355 g	PK	10	5500.2639.09
60	Medical (M80)	Bolt and nut M6	P	0.08	1	7.2	1220 g	QF	1	5500.2648.09
60	Medical (M80)	Bolt and nut M6	Q	0.08	1	7.2	1220 g	QF	1	5500.2658.09

Most Popular.

Availability for all products can be searched real-time: <https://www.schurter.com/en/Stock-Check/Stock-Check-SCHURTER>

- 3 designs N) excellent symmetrical noise attenuation
- P) high symmetrical noise attenuation
- Q) standard symmetrical noise attenuation