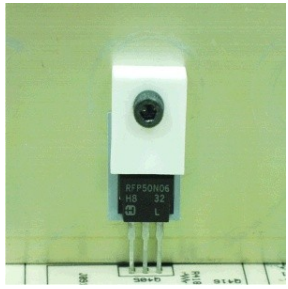
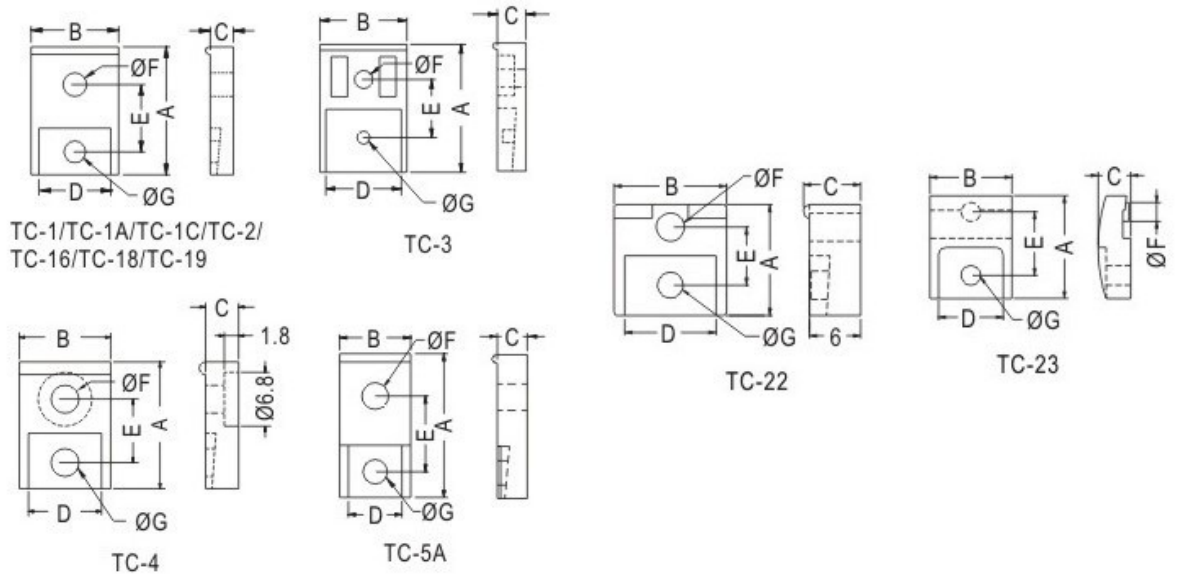


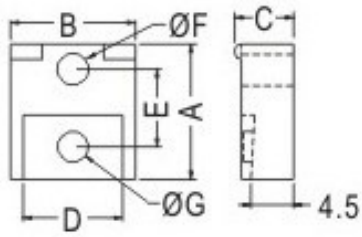
FIX-TC



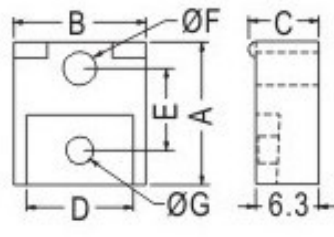
- ◆ MATERIAL: NYLON 66(UL)
- ◆ FLAME CLASS: 94V-2
- ◆ COLOR: NATURAL
- ◆ UNIT: mm



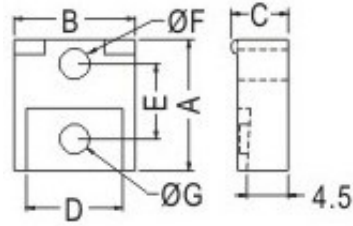
PART NO	A	B	C	D	E	F	G	APPLICATION
FIX-TC-1	16.0	13.0	5.4	10.7	8.0	3.5	3.4	TO220
FIX-TC-1A	19.3	13.0	5.4	10.7	10.0	3.6	3.4	TO220
FIX-TC-1C	17.8	13.0	5.5	10.7	9.3	3.5	3.3	TO220
FIX-TC-2	19.0	18.0	6.0	16.0	10.5	3.5	3.5	TO218
FIX-TC-3	28.0	19.0	8.0	16.5	12.8	3.9	2.8	TO3P
FIX-TC-4	16.0	13.0	5.4	10.7	8.0	3.5	3.5	TO220
FIX-TC-5A	16.0	13.0	5.5	10.5	8.0	3.5	3.5	TO220
FIX-TC-6	13.0	13.2	6.2	10.7	6.8	3.3	3.3	TO220
FIX-TC-7	13.0	13.2	7.0	10.7	6.8	3.3	3.0	TO220
FIX-TC-8	20.0	25.4	7.0	10.7	6.8	3.3	-	-
FIX-TC-9	23.0	12.9	8.3	10.8	9.3	3.5	2.8	TO220
FIX-TC-10	14.3	13.2	6.2	10.5	8.2	3.3	3.2	TO220
FIX-TC-11	14.3	13.2	7.0	10.7	8.2	3.3	2.7	TO220
FIX-TC-13	14.3	13.2	4.2	-	8.1	3.3	3.5	-
FIX-TC-16	22.5	13.0	5.5	10.5	15.0	3.5	3.5	-
FIX-TC-18	16.0	13.0	5.4	10.7	8.0	3.5	3.5	TO220
FIX-TC-19	30.0	18.0	6.0	15.7	17.0	3.6	2.8	-
FIX-TC-20	17.7	12.1	5.6	-	10.0	3.8	3.5	-
FIX-TC-22	13.0	13.2	6.7	10.7	7.1	3.3	2.8	TO220
FIX-TC-23	19.1	15.2	6.1	12.0	11.8	3.5	3.6	-



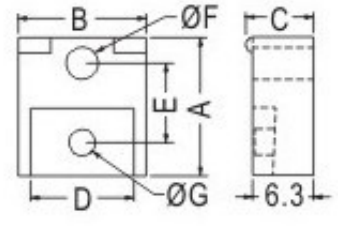
TC-10



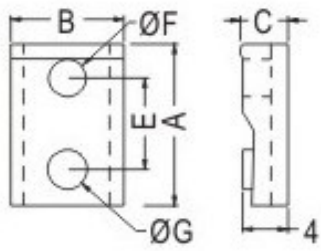
TC-11



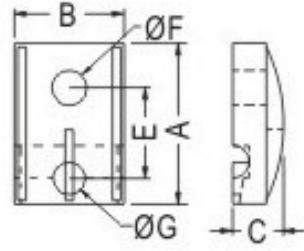
TC-10



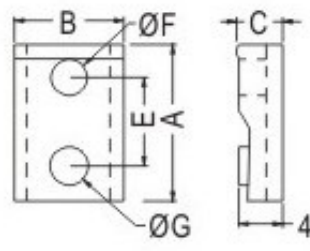
TC-11



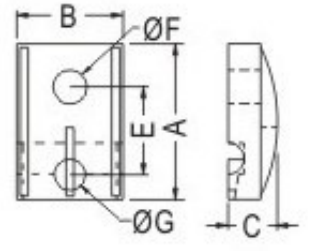
TC-13



TC-20



TC-13



TC-20