

**EXCELON® 72**  
**Filter Combination Units**  
**1/4" and 3/8" Port Sizes**

- True modularity with Norgren Quikclamp™ connections
- F72G prefilter and F72C oil removal filter provide high efficiency oil removal and particle removal down to 0.01 µm
- Quick release bayonet bowl
- Highly visible, prismatic liquid level indicator lens
- Service indicator turns from green to red when the filter element needs to be replaced

**Technical Data**

Fluid: Compressed air

Maximum pressure:

Transparent bowl:

Manual or semi automatic drain: 10 bar (150 psig)

Automatic drain: 8 bar (116 psig)

Metal bowl:

Manual or semi automatic drain: 17 bar (250 psig)

Automatic drain: 8 bar (116 psig)

Operating temperature\*:

Transparent bowl: -20° to +50°C (0° to +125°F)

Metal bowl: -20° to +65°C (0° to +150°F)

\* Air supply must be dry enough to avoid ice formation at temperatures below +2°C (+35°F).

Particle removal: Down to 0,01 µm

Air quality: Within ISO 8573-1, Class 1 (particulates) and Class 2 (oil content)

Maximum remaining oil content in outlet air: 0,01 ppm at +20°C (+70°F) with an inlet concentration of 17 ppm

Maximum flow at 6,3 bar (90 psig) inlet pressure to maintain stated oil removal performance: 4,5 dm<sup>3</sup>/s (9.5 scfm)

Manual drain connection: 1/8"

Semi automatic drain connection: Push on 8 mm (5/16") ID tube

Semi automatic drain operating conditions (pressure operated):

Bowl pressure required to close drain: Greater than 0,1 bar (1.5 psig)

Bowl pressure required to open drain: Less than 0,1 bar (1.5 psig)

Minimum air flow required to close drain: 0,5 dm<sup>3</sup>/s (1 scfm)

Manual operation: Lift stem to drain bowl

Automatic drain connection: 1/8"

Automatic drain operating conditions (float operated):

Bowl pressure required to close drain: Greater than 0,3 bar (5 psig)

Bowl pressure required to open drain: Less than 0,2 bar (3 psig)

Minimum air flow required to close drain: 0,1 dm<sup>3</sup>/s (0.2 scfm)

Manual operation: Depress pin inside drain outlet to drain bowl

Nominal bowl size:

Short bowl: 56 ml (1.9 fluid ounce)

Long bowl: 65 ml (2.2 fluid ounce)



Materials:

Body: Zinc

Bowl:

Transparent: Polycarbonate

Transparent with guard: Polycarbonate, zinc guard

Metal: Zinc

Metal bowl liquid level indicator lens:

Transparent nylon

F72G element: Sintered polypropylene

F72C element: Synthetic fibre and polyurethane foam

Elastomers: Neoprene and nitrile

Service indicator materials:

Body: Transparent nylon

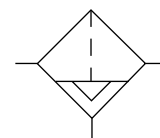
Internal parts: Acetal

Spring: Stainless steel

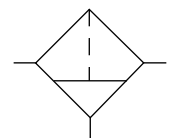
Elastomers: Nitrile

**Ordering Information**

See *Ordering Information* on the following pages.

**ISO Symbols**


Automatic and  
Semi Automatic Drain



Manual Drain



**Ordering information.** Models listed include ISO G parallel threads, service indicator, semi automatic drain, and short transparent bowl without guard on both filters.

Port Size	Model	Flow* dm <sup>3</sup> /s (scfm)	Weight kg (lb)
G1/4	H72A-2GB-ST1-NNN-TNN	4,5 (9.5)	0,91 (2)
G3/8	H72A-3GB-ST1-NNN-TNN	4,5 (9.5)	0,91 (2)

\* Maximum flow with 6,3 bar (90 psig) inlet pressure to maintain stated oil removal performance.

**Alternative Models**

★ 7 2 A - ★ ★ ★ - ★ ★ ★ - N N N - ★ N ★

Shutoff/Lockout Valve, Quikmount	Substitute
Standard Combination (No Shutoff/Lockout Valve, no Quikmount)	H
With Shutoff/Lockout valve on inlet	J
With Quikmount pipe adapters on inlet and outlet	M
With Shutoff/Lockout Valve on inlet and Quikmount pipe adapter on outlet	N

Combination Unit Type	Substitute
F72G general purpose filter and F72C coalescing filter	A

Port Size	Substitute
1/4"	2
3/8"	3

Threads	Substitute
PTF	A
ISO Rc taper	B
ISO G parallel	G

Mechanical Service Indicator	Substitute
Indicator on F72G and F72C	B
Indicator only on F72C	C
Indicator only on F72G	D
No indicator	N

Quikclamp Wall Brackets	Substitute
With	B
Without	N

Adsorbing Filter Bowl	Substitute
No Adsorbing filter	N

F72C Bowl	Substitute
Short metal with liquid level indicator	D
Short transparent without guard	T
Long transparent without guard	L
Long transparent with guard	W

Regulator Option	Substitute
Non Applicable	N

Regulator Option	Substitute
Non Applicable	N

Regulator Option	Substitute
Non Applicable	N

F72G Filter Element	Substitute
5 µm	1

F72G Bowl	Substitute
Short metal with liquid level indicator	D
Short transparent without guard	T
Long transparent without guard	L
Long transparent with guard	W

F72G and F72C Drain	Substitute
Automatic**	A
Manual, 1/4 turn	Q
Semi automatic	S

\*\* Supplied in long bowl options only.

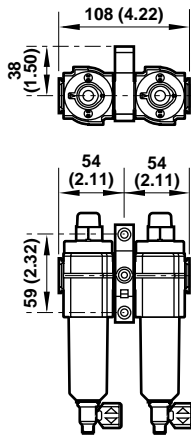
**Accessories.** See page N/AL.8.160.700.



**Dimensions mm (inches).** See pages N/AL.8.160.100, N/AL.8.160.105, N/AL.8.160.600, and N/AL.8.160.700 for dimensions of individual products and the Quikclamp wall bracket.

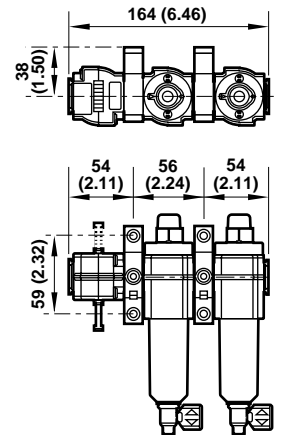
**Standard Type H72A-**

Shown with optional Quikclamp wall bracket.



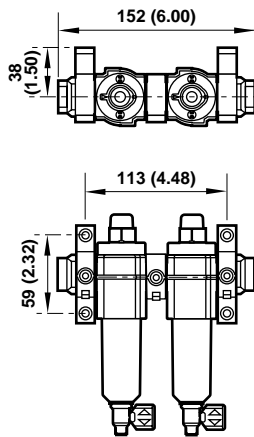
**Alternative Type J72A-**  
Includes Shutoff/Lockout valve.

Shown with optional Quikclamp wall brackets.



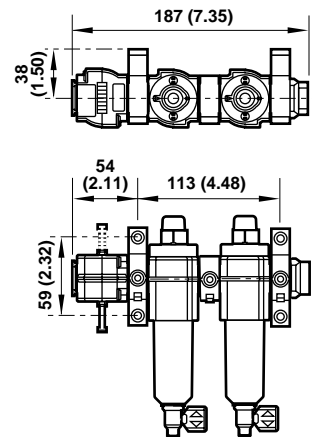
**Alternative Type M72A-**  
Includes Quikmount pipe adapters.

Shown with optional Quikclamp wall brackets.

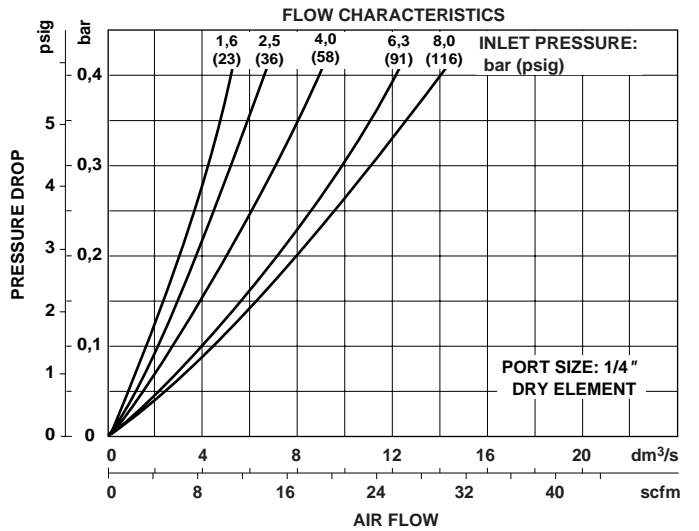
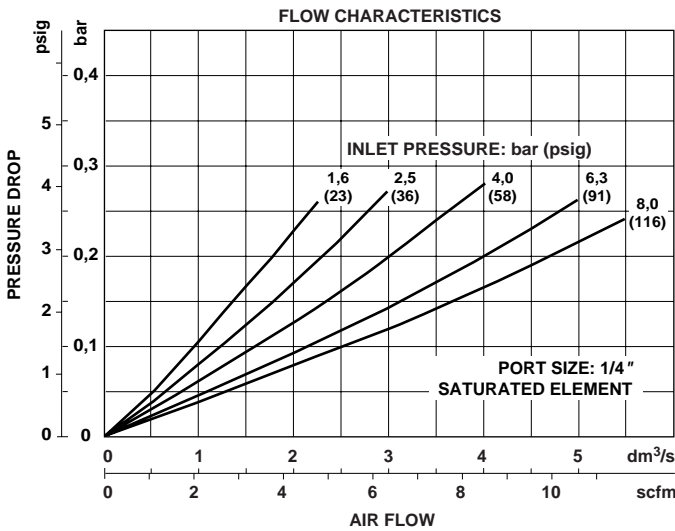


**Alternative Type N72A-**  
Includes Shutoff/Lockout valve and Quikmount pipe adapter.

Shown with optional Quikclamp wall brackets.



**Typical Performance Characteristics**



Inlet Pressure bar (psig)	Maximum Flow* dm <sup>3</sup> /s (scfm)
1 (15)	1,8 (3,8)
3 (45)	3,1 (6,6)
5 (70)	4,0 (8,5)
6,3 (90)	4,5 (9,5)
7 (100)	4,7 (10,0)
9 (130)	5,4 (11,4)

\* Maximum flow for 1/4" ported filters to maintain stated oil removal characteristics.



## Warning

These products are intended for use in industrial compressed air systems only. Do not use these products where *pressures* and *temperatures* can exceed those listed under 'Technical Data'.

Before using these products with fluids other than those specified, for non-industrial applications, life-support systems, or other applications not within published specifications, consult Norgren.

Through misuse, age, or malfunction, components used in fluid power systems can fail in various modes. The system designer is warned to consider the failure modes of all component parts used in fluid power systems and to provide adequate safeguards to prevent personal injury or damage to equipment in the event of such failure.

**System designers must provide a warning to end users in the system instructional manual if protection against a failure mode cannot be adequately provided.**

System designers and end users are cautioned to review specific warnings found in instruction sheets packed and shipped with these products.

Water vapor will pass through these units and will condense into liquid if air temperature drops in the downstream system. Install an air dryer if water condensation could have a detrimental effect on the application.