

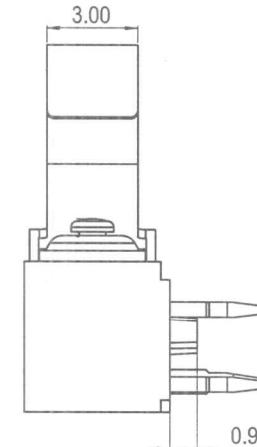
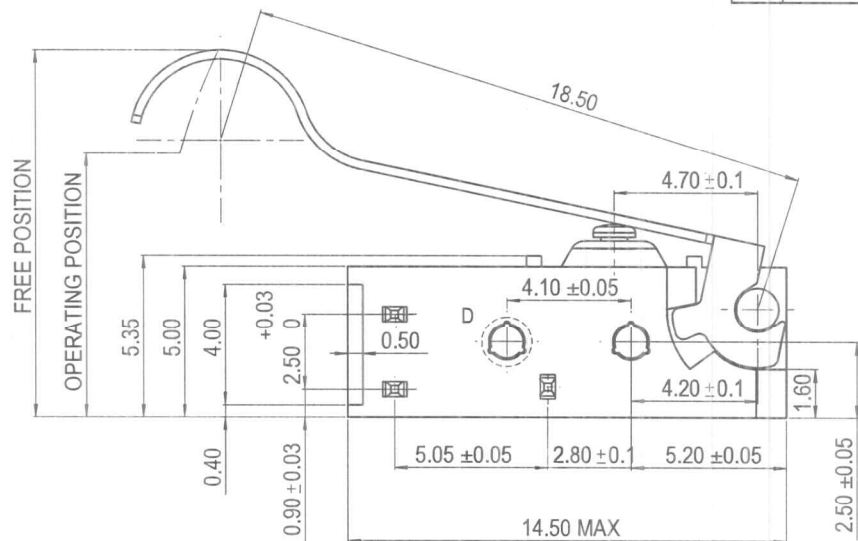
ALT.	REF.	DESCRIPTION	DATE	BY
A		Initial release		
B	AK158001	replace old drawing(TM23212)	2014.10.14	XQL

SPECIFICATION

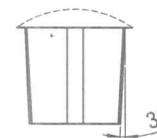
SNAP-ACTION CONTACTS

- ACTUATING FORCE: 0.6N MAX.
- RELEASE FORCE: 0.05N MIN.
- FREE POSITION: 13.3 MAX.
- OPERATING POSITION: 10.1±1.2
- MOVEMENT DIFFERENTIAL: 0.9 MAX.
- TOTAL TRAVEL: DEPRESS TO HOUSING RIBS LEVEL
- DEGREE OF PROTECTION: IP54

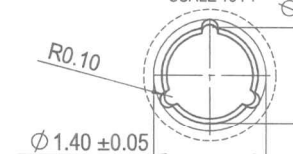
INSTALLATION DRAWING



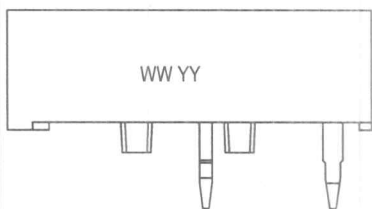
DETAIL C
SCALE 16 : 1



DETAIL D
SCALE 16 : 1

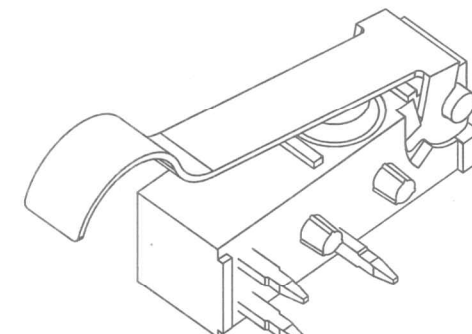
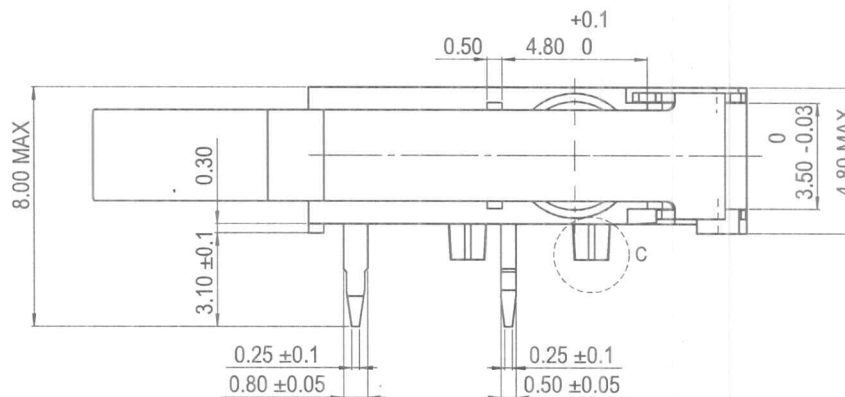
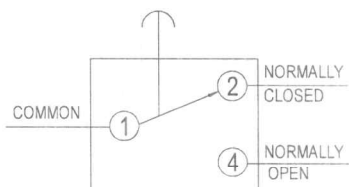


PRINTING:



PRINTING COLOR :ORANGE ON THE LID, LETTER SIZE:1.2mm

DIAGRAM OF CONNECTIONS:



Halver No. : C34952		
DWN. BY XINGQUAN LI	CHK. BY Brennenstuhl	APP. BY <i>[Signature]</i>
Date (yyyymmdd) 2014/10/14	Date (yyyymmdd) 2015/05/07	Date (yyyymmdd) <i>2015/05/19</i>

Cpk	Characteristics	Customer Significant
> 1.67	Key Product	■
> 1.33		■
> 1.00		■
Not Required		■

FINISH :		General Tolerance : ISO 2768-1 Class m (Unless specified)	
JOHNSON ELECTRIC		JOHNSON ELECTRIC GROUP OF COMPANIES ("JOHNSON ELECTRIC")	
TITLE		ALL DIMENSIONS ARE IN MILLIMETRES	
F1NST8AC		SCALE 6:1	
DWG No.		SHEET 1 OF 2	
1434-8AK0026			

Environmental requirement: as ESDC067