

U.I. Lapp GmbH	PRODUCT INFORMATION	
	SKINDICHT® EKU	07.11.2014

Enables the use of cable glands with larger connection threads than the existing threaded holes

Assembling with a wrench

Supporting surface for spanner means scratches on the housing are avoided



Space requirement

Application range

Machines

Devices

Housings

Product Make-up

PG connection thread

Remark

Photographs are not to scale and do not represent detailed images of the respective products.

Technical Data

Classification:

ETIM 5.0 Class-ID: EC000441

ETIM 5.0 Class-Description: cable screw gland

Colour delivered:

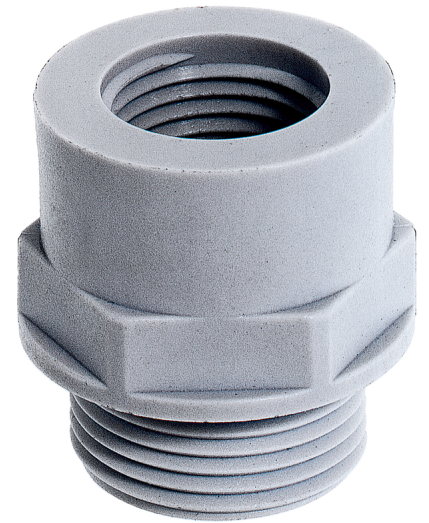
Light grey (RAL 7035)

Material:

Polyamide, glass fibre-reinforced

Temperature range:

-40°C to +100°C



Product Management	Document: LAPP_PRO1107EN.pdf	1 / 2
--------------------	------------------------------	-------



SKINDICHT® EKU

07.11.2014

Part number	Article designation / sizeOuter / inner	Pieces / PU
SKINDICHT® EKU		
52025200	EKU 7/9	100
51731000	EKU 9/11	100
51731010	EKU 11/13,5	100
51731020	EKU 13,5/16	100
51731030	EKU 16/21	50
51731040	EKU 21/29	25
52025210	EKU 29/36	25
52025220	EKU 36/42	25
52025230	EKU 42/48	25