

D-Sub Plastic Grip Cap, Top Entry

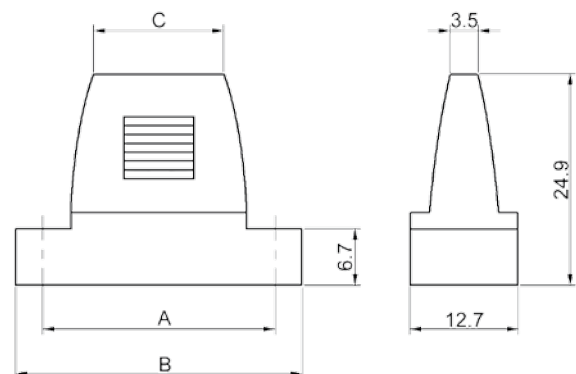
TECHNICAL SPECIFICATIONS

Material:	ABS Plastic, UL 94 HB
Operating Temperature:	-25°C to +85°C
Cable Entry:	Top / Individual Wire Entry
Jackscrews:	UNC 4-40



Features:

- Supplied with Female Screw-Locks
- Suitable for Solder Cup D-Sub Connector only



Size DFCC	Dim A	Dim B	Dim C
9-way	25,0	32,0	15,5
15-way	33,4	40,0	22,2
25-way	47,0	53,7	36,0

Ordering information:

Size:	P/N - Kitted:	Product Code:
9-way	1520-0201-01	DFCC15-P
15-way	1520-0201-02	DFCC25-P
25-way	1520-0201-03	DFCC37-P