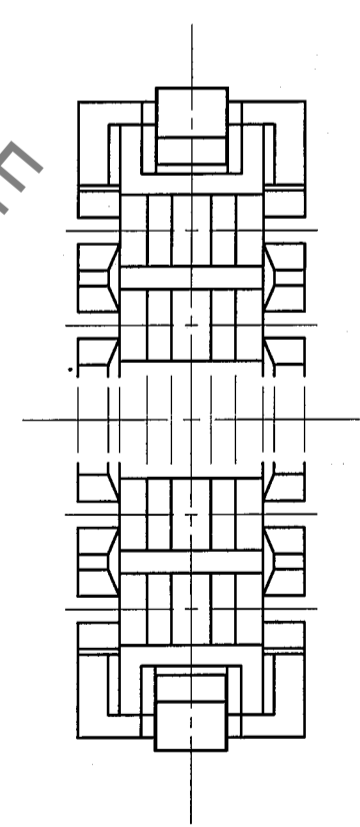
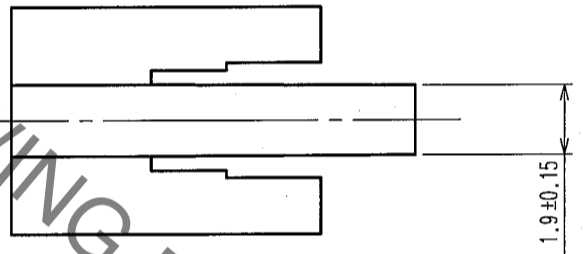
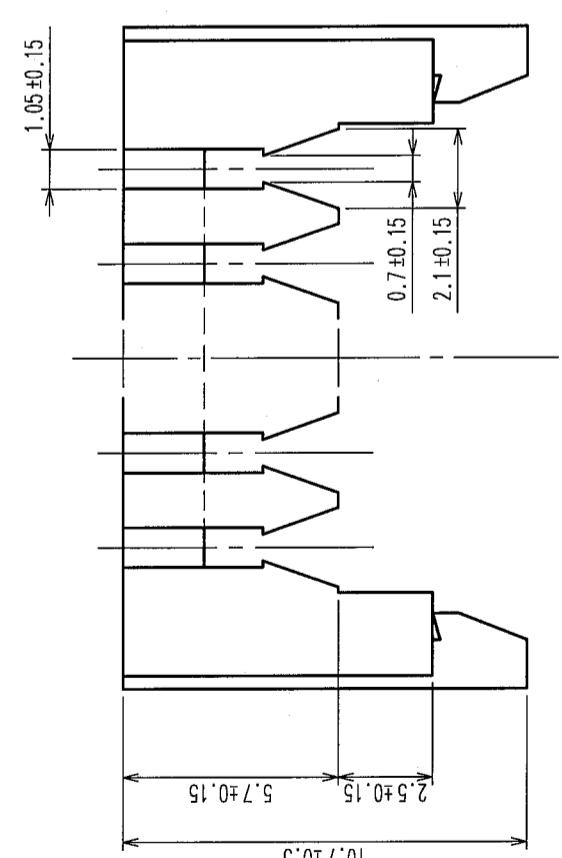
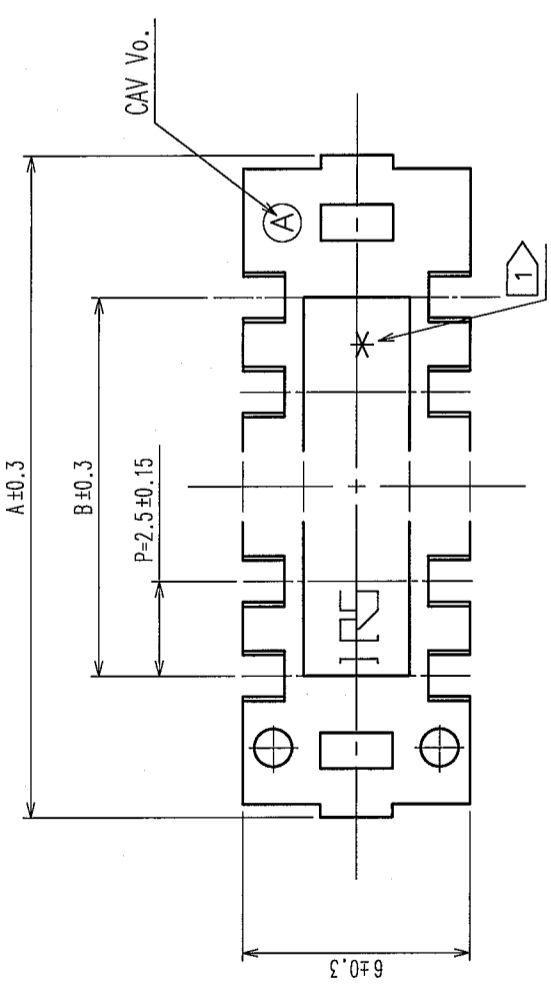


COUNT	DESCRIPTION OF REVISIONS	BY	CHKD	DATE	COUNT	DESCRIPTION OF REVISIONS	BY	CHKD	DATE
△					△				
△					△				
△					△				



CODE No	PART No	NUMBER OF CONTACT	A	B
CL541-0096-6	DF1-2A1.05	2	10.0	2.5
CL541-0097-9	DF1-3A1.05	3	12.5	5.0
CL541-0098-1	DF1-4A1.05	4	15.0	7.5
CL541-0099-4	DF1-5A1.05	5	17.5	10.0
CL541-0100-1	DF1-6A1.05	6	20.0	12.5
CL541-0101-4	DF1-7A1.05	7	22.5	15.0
CL541-0102-7	DF1-8A1.05	8	25.0	17.5
CL541-0103-0	DF1-9A1.05	9	27.5	20.5
CL541-0104-2	DF1-10A1.05	10	30.0	22.5
CL541-0105-5	DF1-11A1.05	11	32.5	25.0
CL541-0106-8	DF1-12A1.05	12	35.0	27.5
CL541-0107-0	DF1-13A1.05	13	37.5	30.0
CL541-0108-3	DF1-14A1.05	14	40.0	32.5
CL541-0109-6	DF1-15A1.05	15	42.5	35.0
CL541-0110-5	DF1-16A1.05	16	45.0	37.5
CL541-0114-6	DF1-20A1.05	20	55.0	47.5

NOTES 1 NO. OF CONTACTS SHALL BE INDICATED EXCLUDING 2 AND 3 POSITIONS.
 2 APPLICABLE CABLE: UL1007 AWC26, 28.

HRS DRAWING FOR REFERENCE

TO

NO.	MATERIAL	FINISH, REMARKS	NO.	MATERIAL	FINISH, REMARKS
1	POLYAMIDE			BROWN, UL94V-0	

NO. (OLD)	FINISH, REMARKS	NO.	MATERIAL	FINISH, REMARKS

DRAWN	DESIGNED	CHECKED	APPROVED	RELEASED
A. Miura '05.12.26	R. N. N. N. '05.12.26	H. Uchida '05.12.28	J. Oka '05.12.28	

DRAWING NO. EDC3-162340-01	PART NO. DF1-*A1.05
SCALE 5 : 1	CODE NO. CL541
UNITS mm	