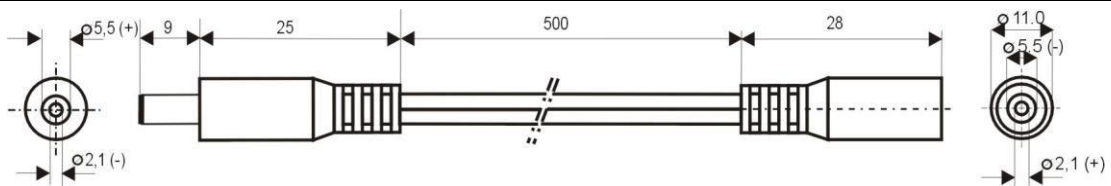


### Specification:

Model	<b>DC.INV.0300.0050 WHITE</b>
DC Plug	5,5x2,1mm (center positive)
DC Socket	5,5x2,1mm (center negative)
Recommended voltage	0 - 48V
Max Current	5A
Dielectric Strength	500 VDC
Operating temperature	-20°C to +70°C
Cord Length	500mm
Cable Diameter	2x2mm
Wire Diameter	2x0,5mm <sup>2</sup>
ROHS	+



Made in Poland