

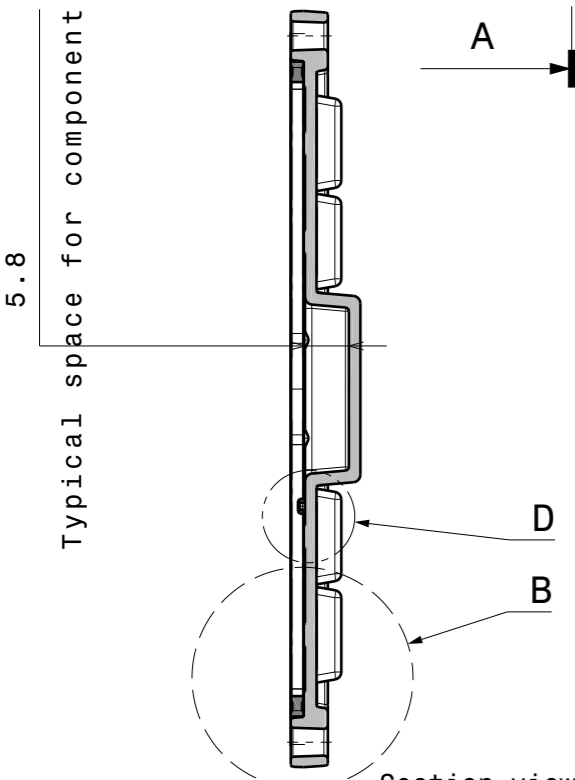
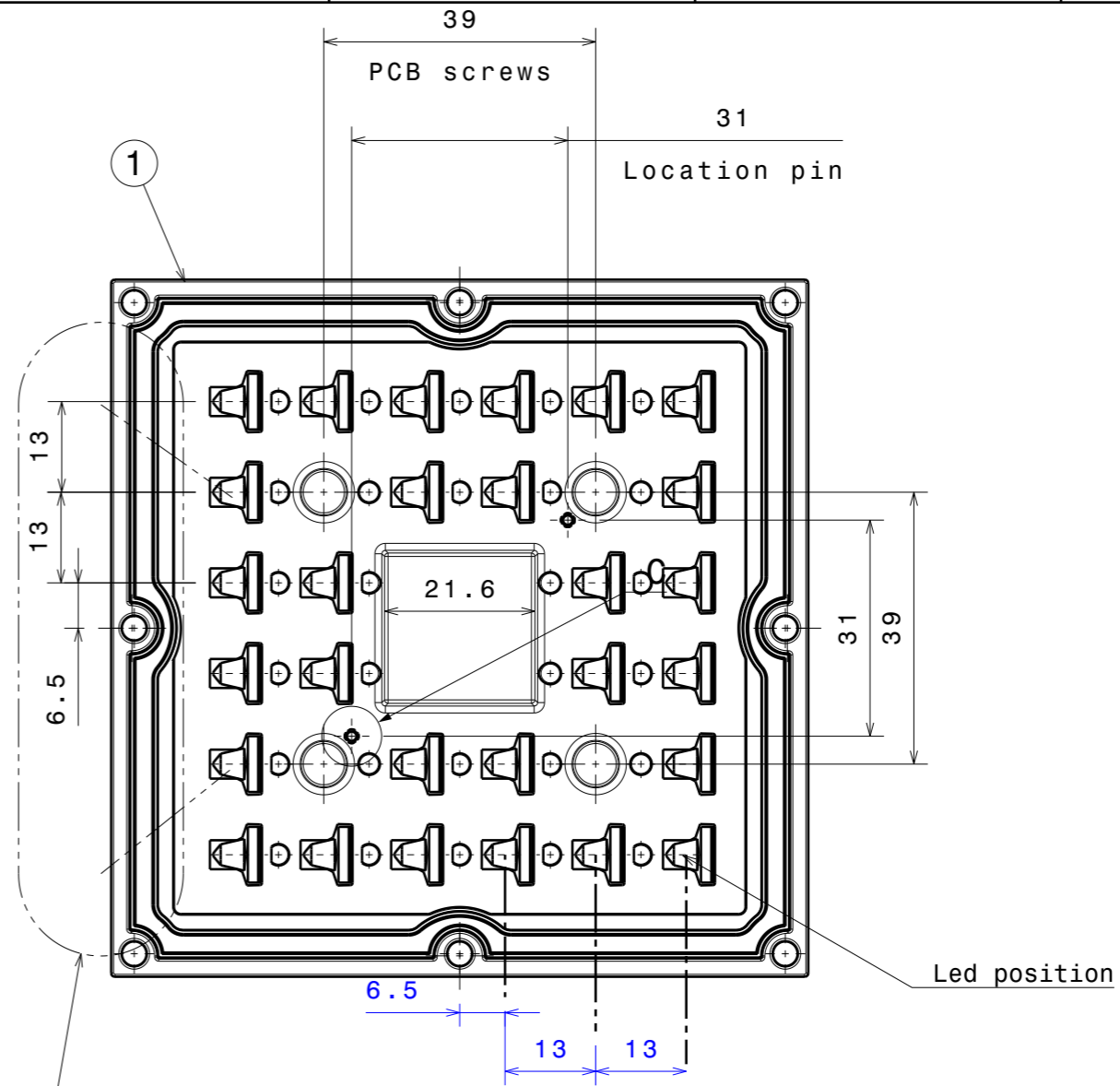
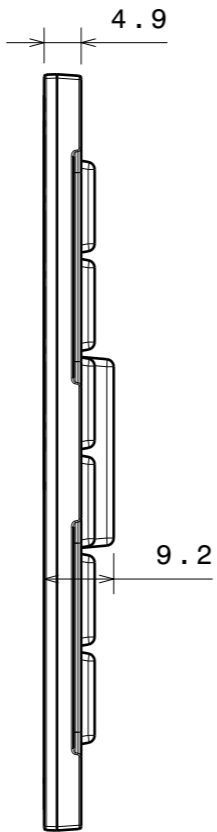
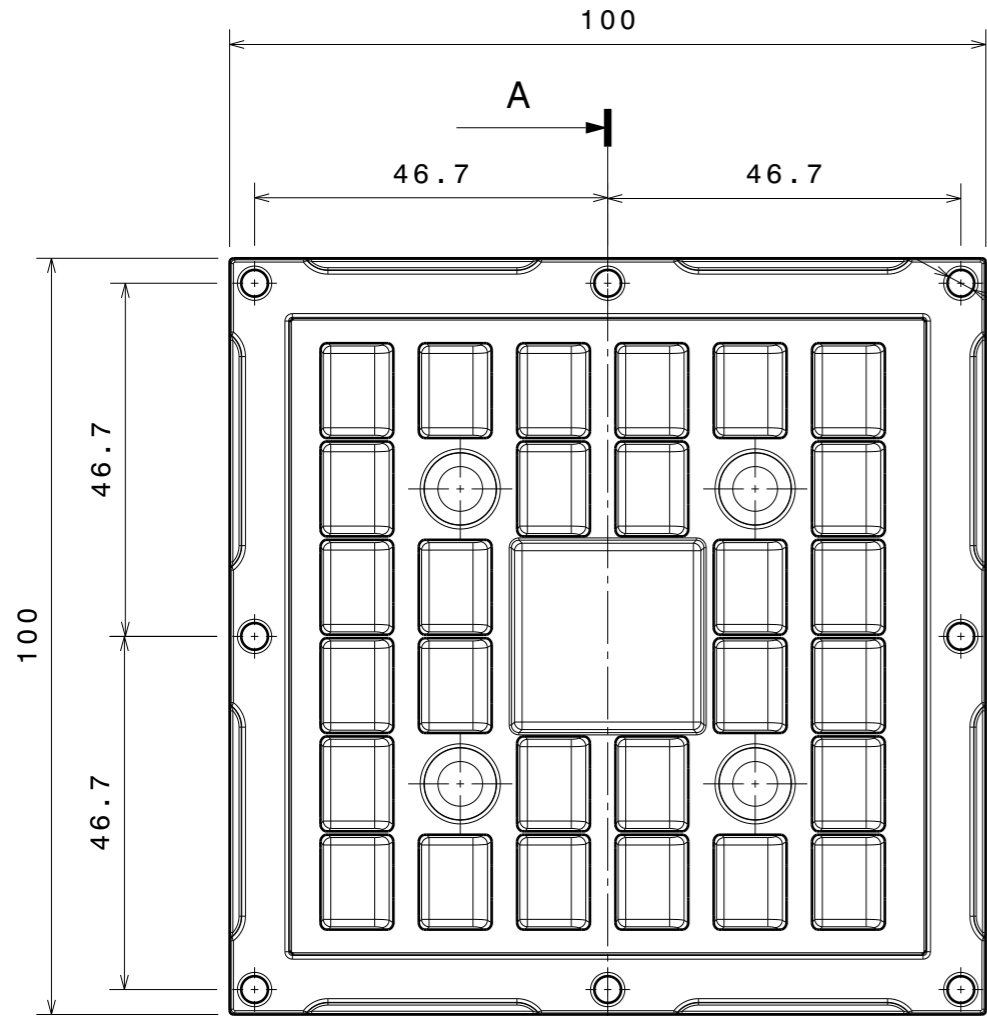
DETAILS

Product Number	CS16034_STRADELLA-IP-28-T2
Family	Stradella
Type	Lens
Color	clear
Diameter	100*100 mm
Height	9,2 mm
Style	square
Optic Material	PMMA
Holder Material	
Fastening	screw
Status	production ready
ROHS Compliant	Yes
Date Updated	11/12/2017



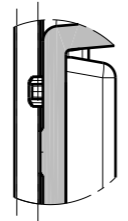
OPTICAL PROPERTIES

LED	Viewing Angle	Light Beam	Efficiency	cd/lm	Connector
XP-G3	sim: Asymmetric	Asymmetric	sim: 91 %	sim: 0.420	-
LG 3528	sim: Asymmetric	Asymmetric	sim: 94 %	sim: 0.550	-
LUXEON 3030 2D	Asymmetric deg	Asymmetric	94 %	0.840	-
NF2x757G	sim: Asymmetric	Asymmetric	sim: 94 %	sim: 0.710	-
Duris S5 (2 chip)	Asymmetric deg	Asymmetric	94 %	0.710	-

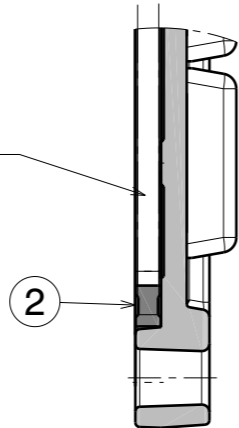


Section view A-A
Scale: 1:1

Detail D
Scale: 2:1

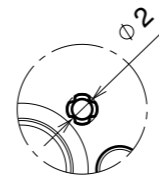


PCB space inside seal 81x 81mm



Detail B
Scale: 2:1

Beam direction



Detail C
Scale: 2:1

INDEX	PART NO	DESCRIPTION	MATERIAL	COLOUR
1	C16033	STRADELLA-28-T2	PMMA	clear
2	C15900	STRADELLA-28-SEAL	Silicone	

Tolerances if not otherwise shown
According to DIN ISO 2768-1
Linear measures:
Up to 30mm class M, otherwise class C.
According to DIN ISO 2768-2
Form and position: class L



LediL Oy
Salorankatu 10
FIN 24240 SALO
Finland

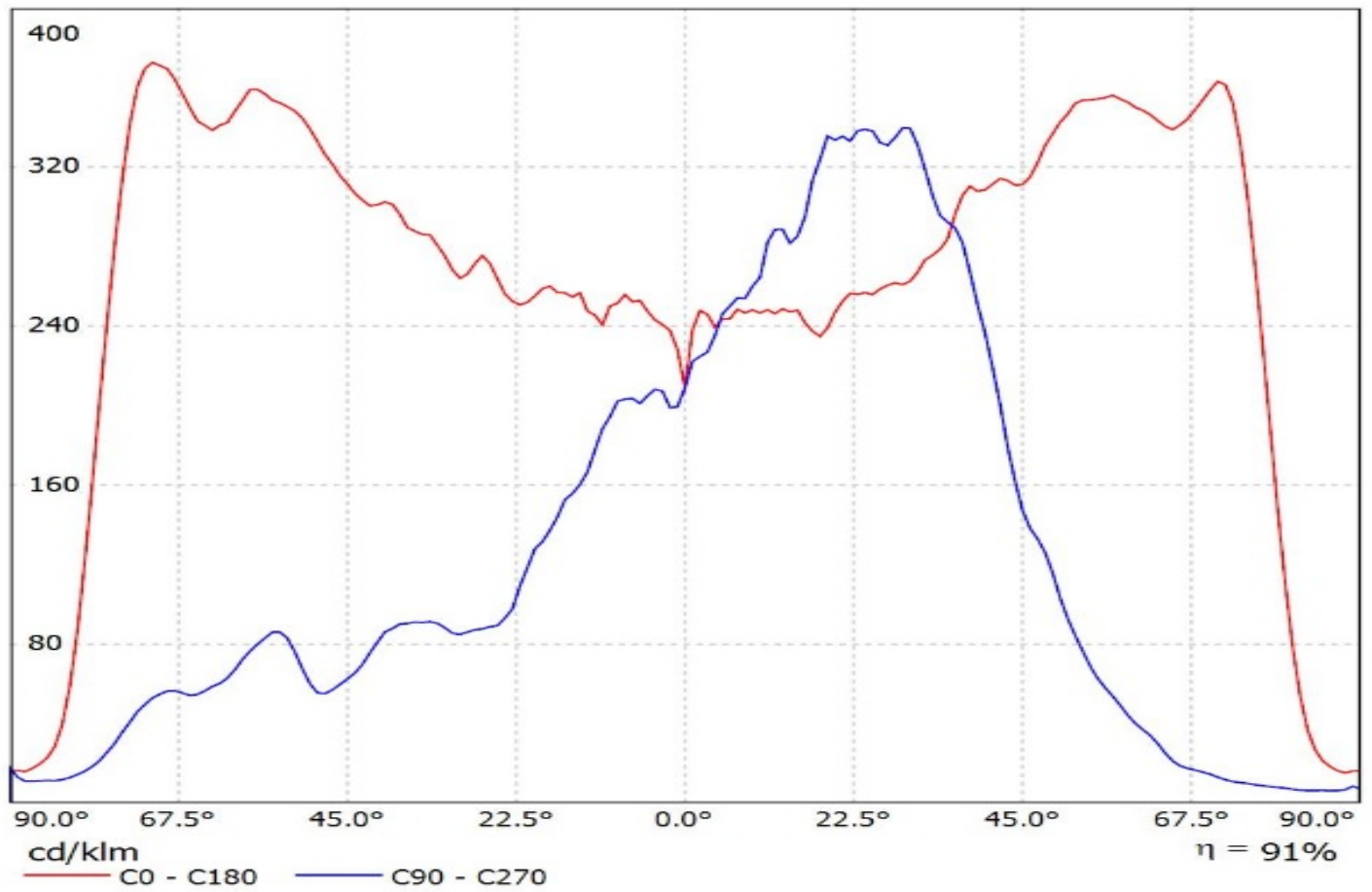
THIRD ANGLE PROJECTION:

DRAWING TITLE
CS16034_STRADELLA-28-T2

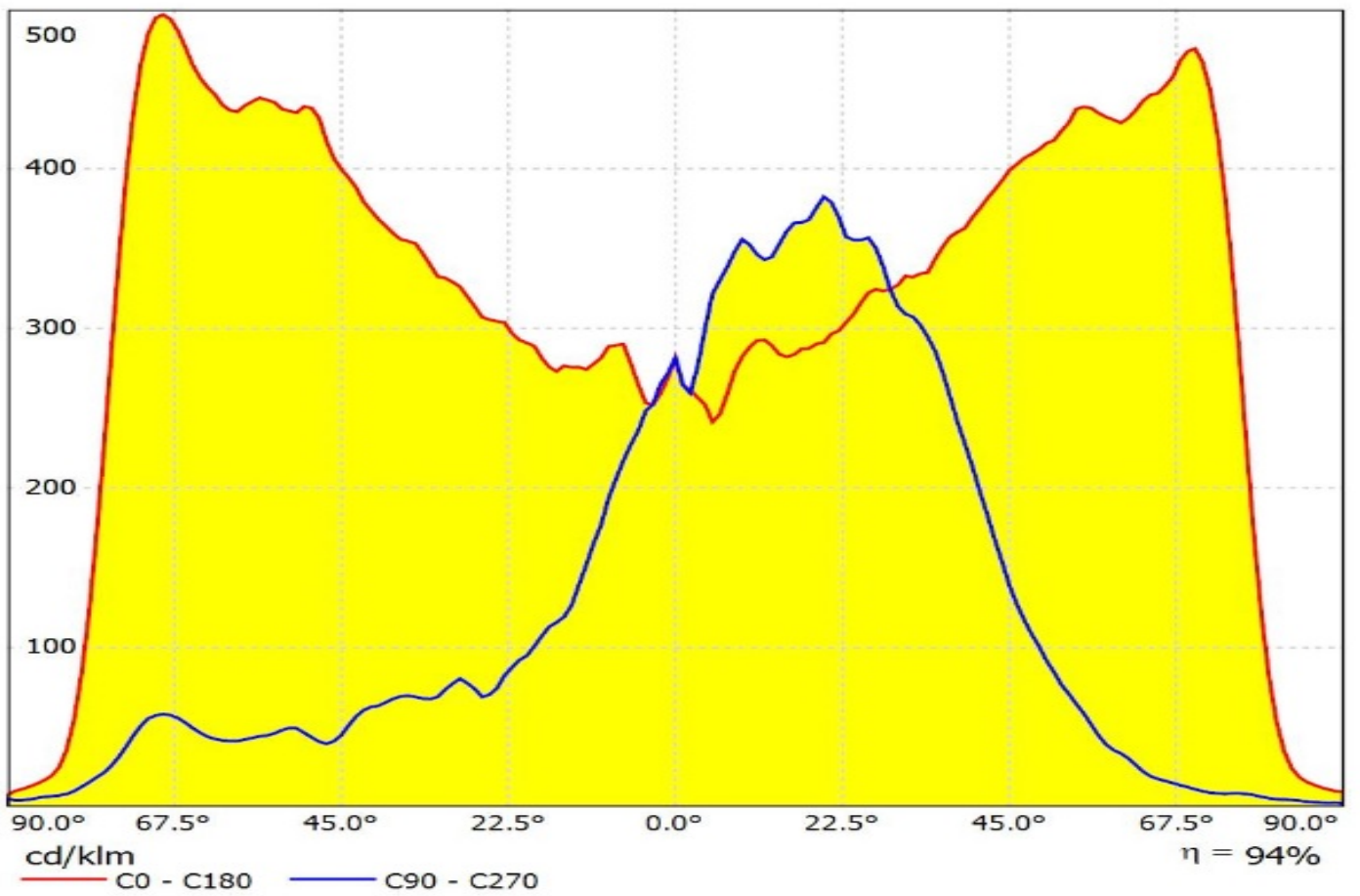
This drawing is the property of LEDiL Oy. It may not be reproduced, copied or communicated without a written agreement with LEDiL Oy.

SIZE	PART NUMBER		
A3	Datasheet		
SCALE	1:1	WEIGHT	SHEET 1/1

Luminaire: Ledil Oy CS16034_STRADELLA-IP-28-T2_(XP-G3)_SIMULATED
Lamps: 1 x Cree XP-G3

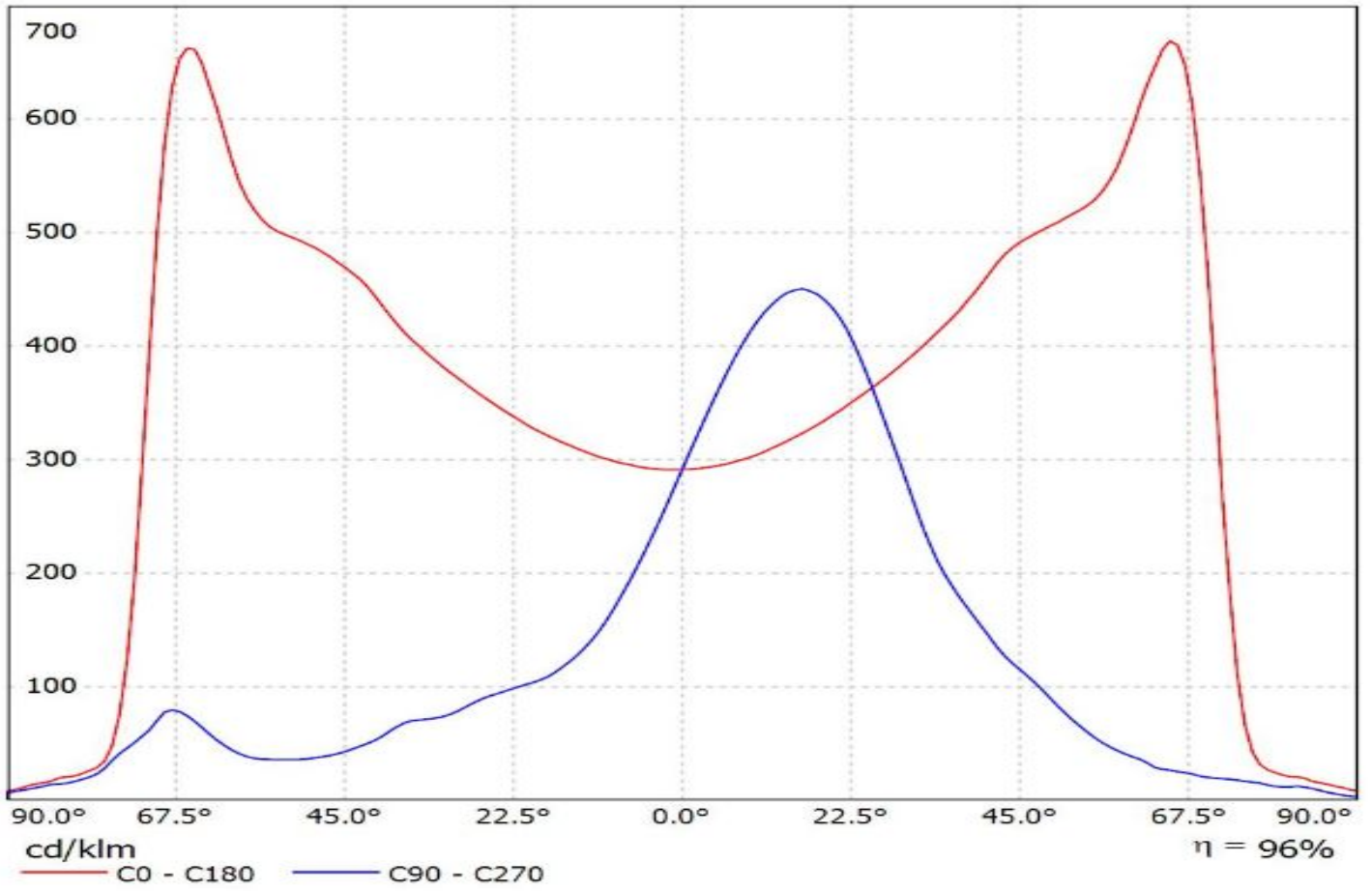


Luminaire: Ledil Oy CS16034_STRADELLA-IP-28-T2_(LG_3528)_SIMULATED
Lamps: 1 x LG 3528



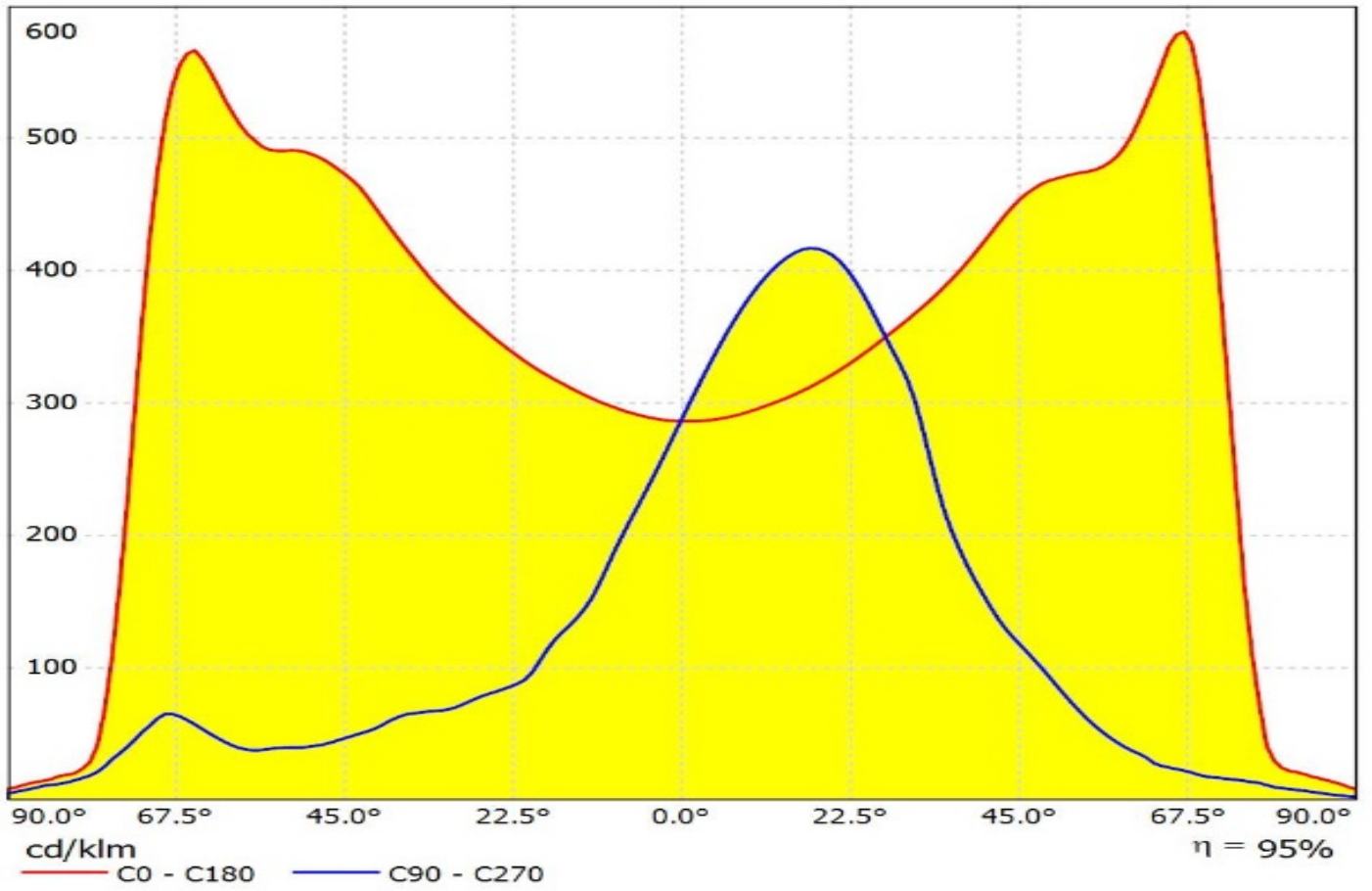
Luminaire: Ledil CS16034_STRADELLA-IP-28-T2_(Luxeon_3030_2D)

Lamps: 1 x Lumileds_Luxeon_3030_2D_1132.31lm@240mA_P=9.57624W_U=39.901V

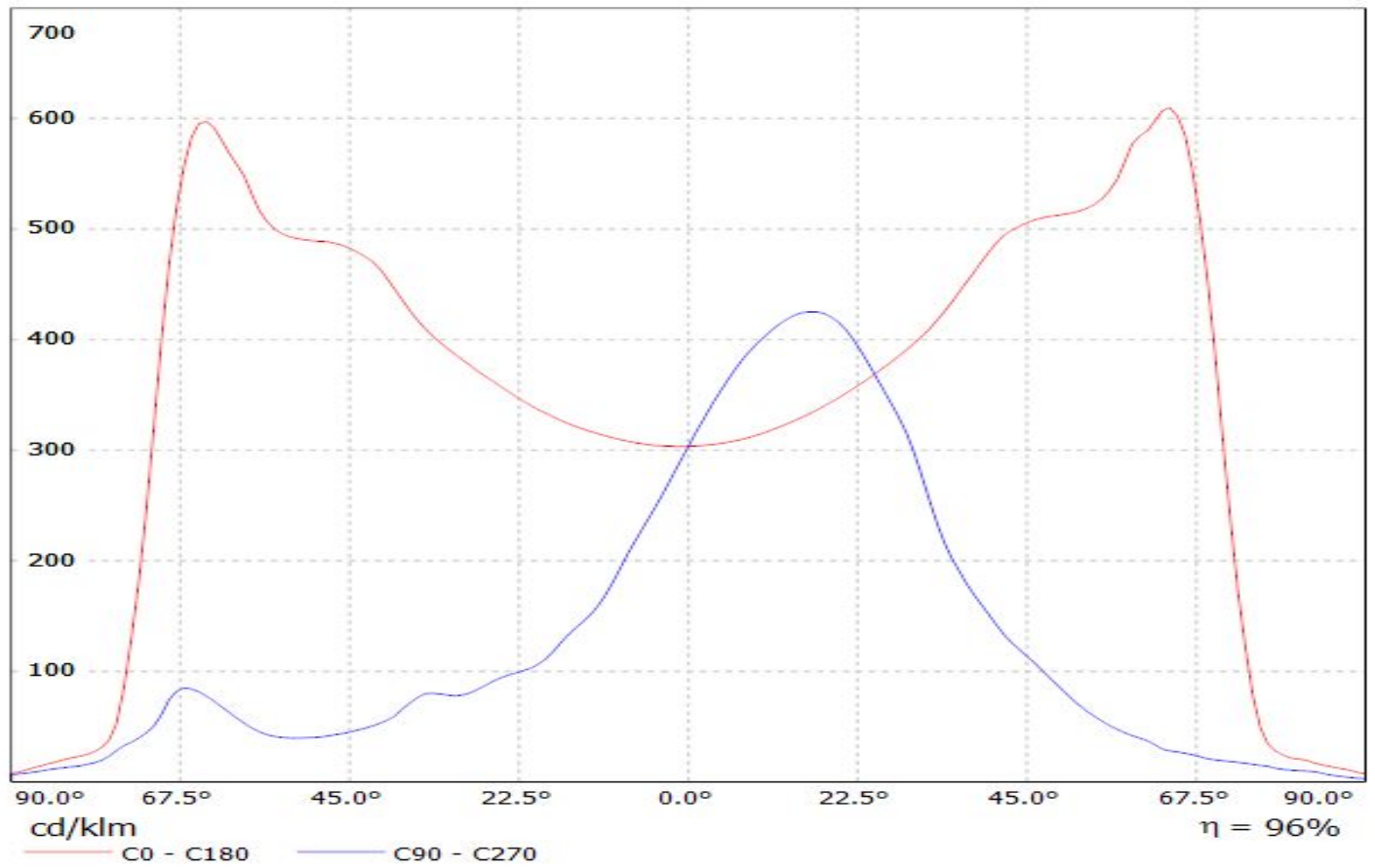


Luminaire: LEDiL Oy CS16034_STRADELLA-IP-28-T2_(NF2x757G)

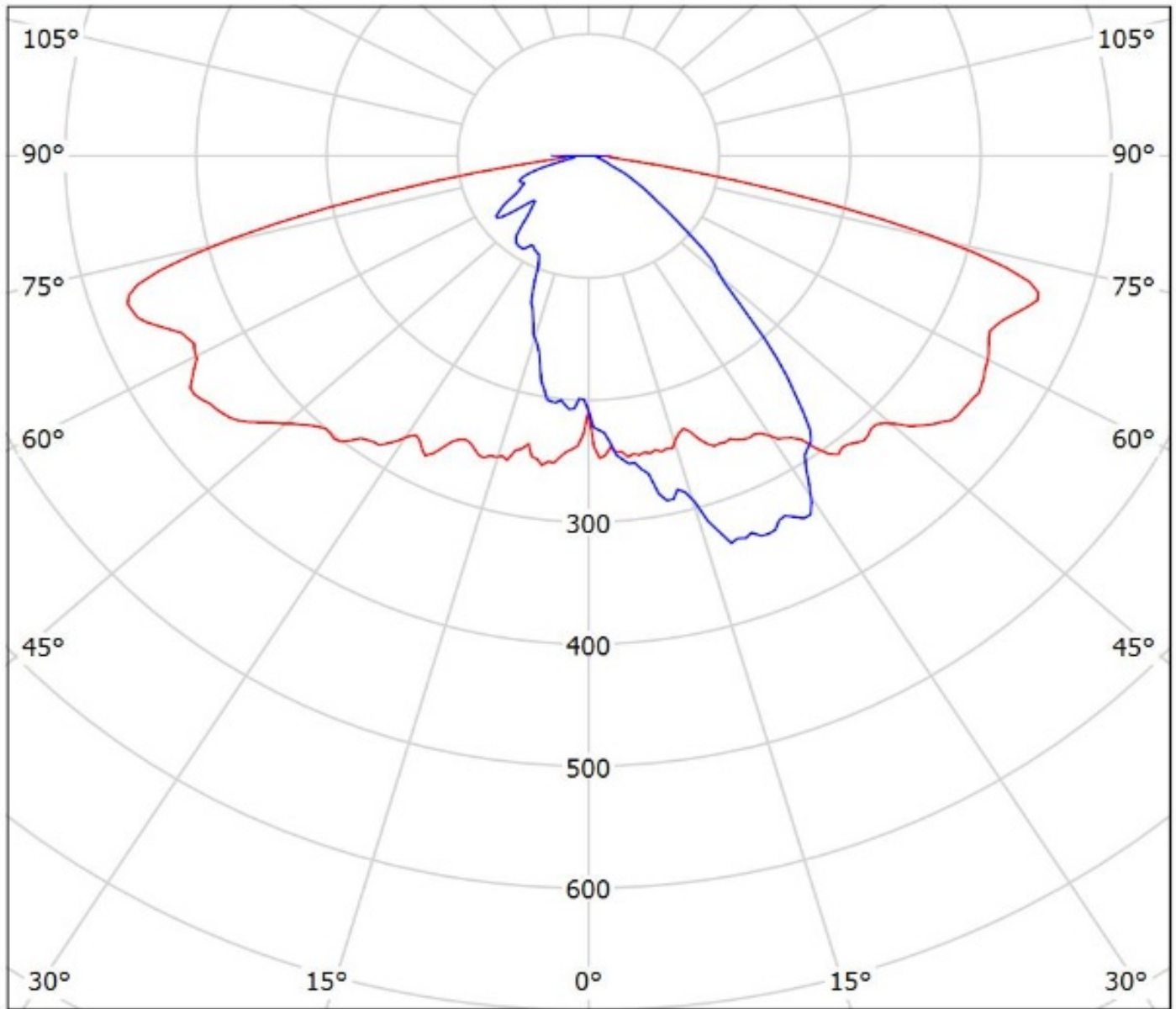
Lamps: 1 x Nichia_NF2x757G_(NF2L757GRT-V1)_1005.33lm@150mA_P=5.81972W_U=38.824V



Luminaire: Ledil CS16034_STRADELLA-IP-28-T2_(Duris_S5)
Lamps: 1 x Osram_Duris_S5_Stradella28_(GW_PSLR32_EM-JQJS-A333-1)
_786.457lm@250mA_P=4.90979W_I=0.250A



Luminaire: Ledil Oy CS16034_STRADELLA-IP-28-T2_(XP-G3)_SIMULATED
Lamps: 1 x Cree XP-G3

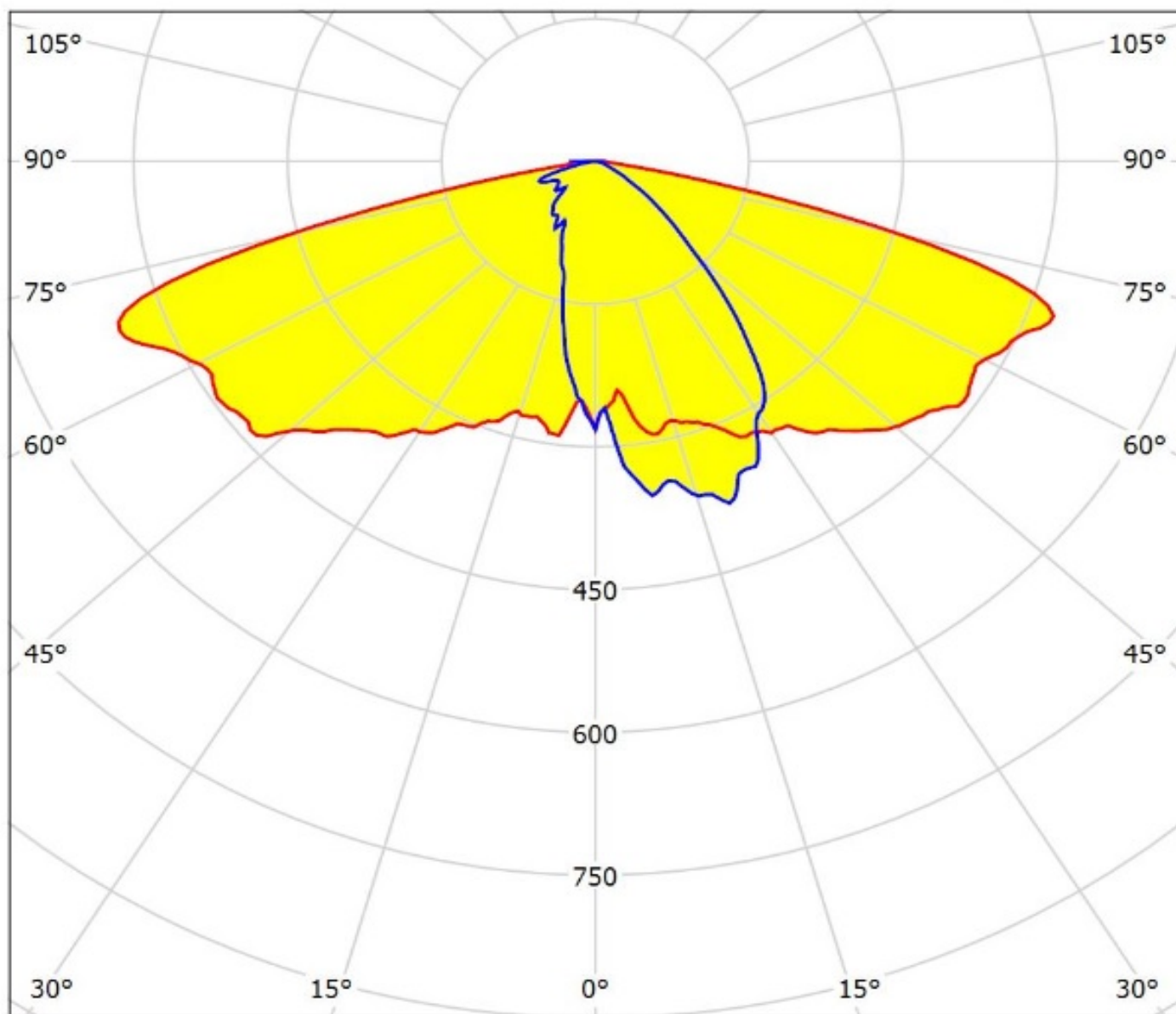


cd/klm

— C0 - C180 — C90 - C270

$\eta = 91\%$

Luminaire: Ledil Oy CS16034_STRADELLA-IP-28-T2_(LG_3528)_SIMULATED
Lamps: 1 x LG 3528



cd/klm

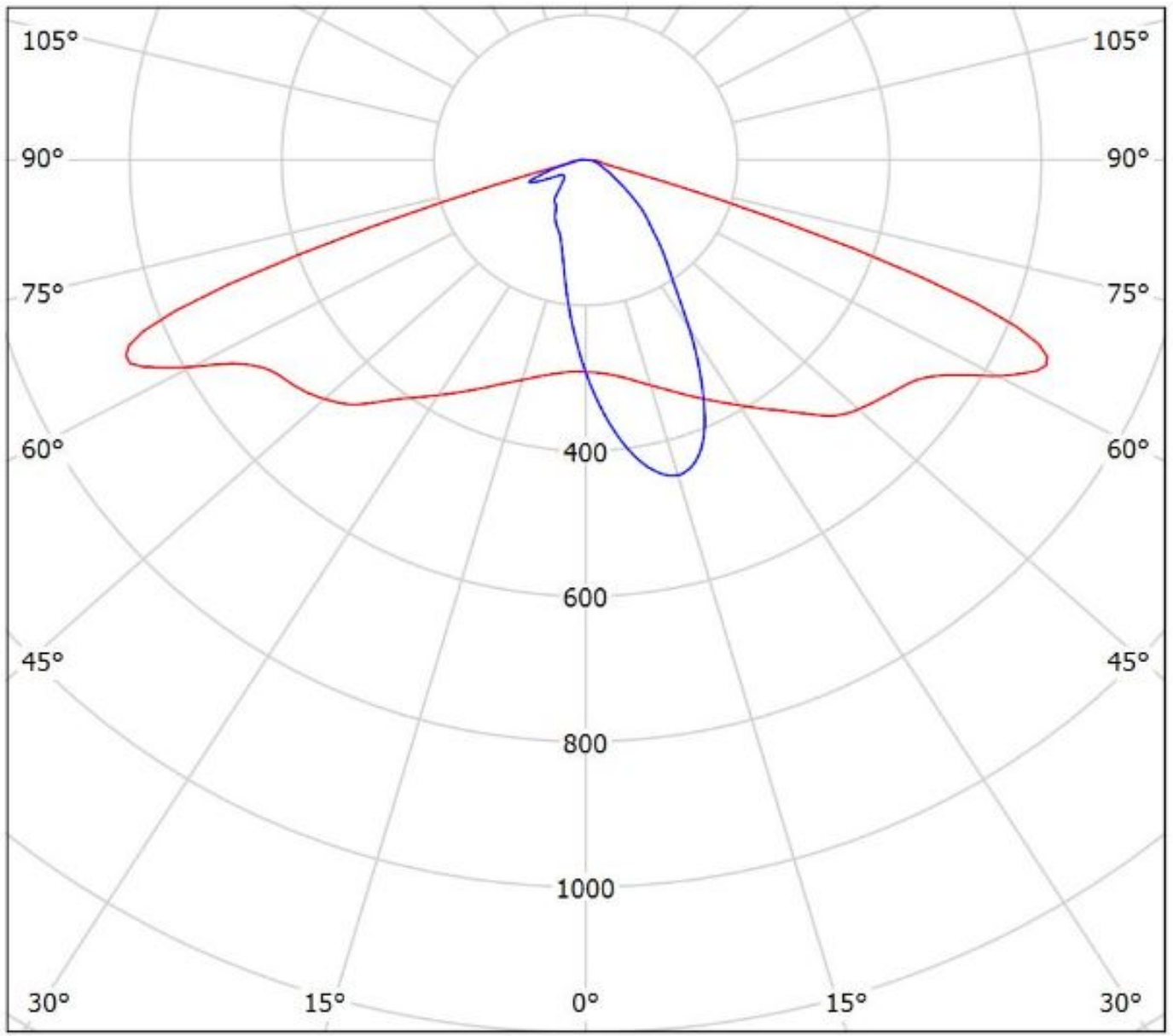
— C0 - C180

— C90 - C270

η = 94%

Luminaire: Ledil CS16034_STRADELLA-IP-28-T2_(Luxeon_3030_2D)

Lamps: 1 x Lumileds_Luxeon_3030_2D_1132.31lm@240mA_P=9.57624W_U=39.901V



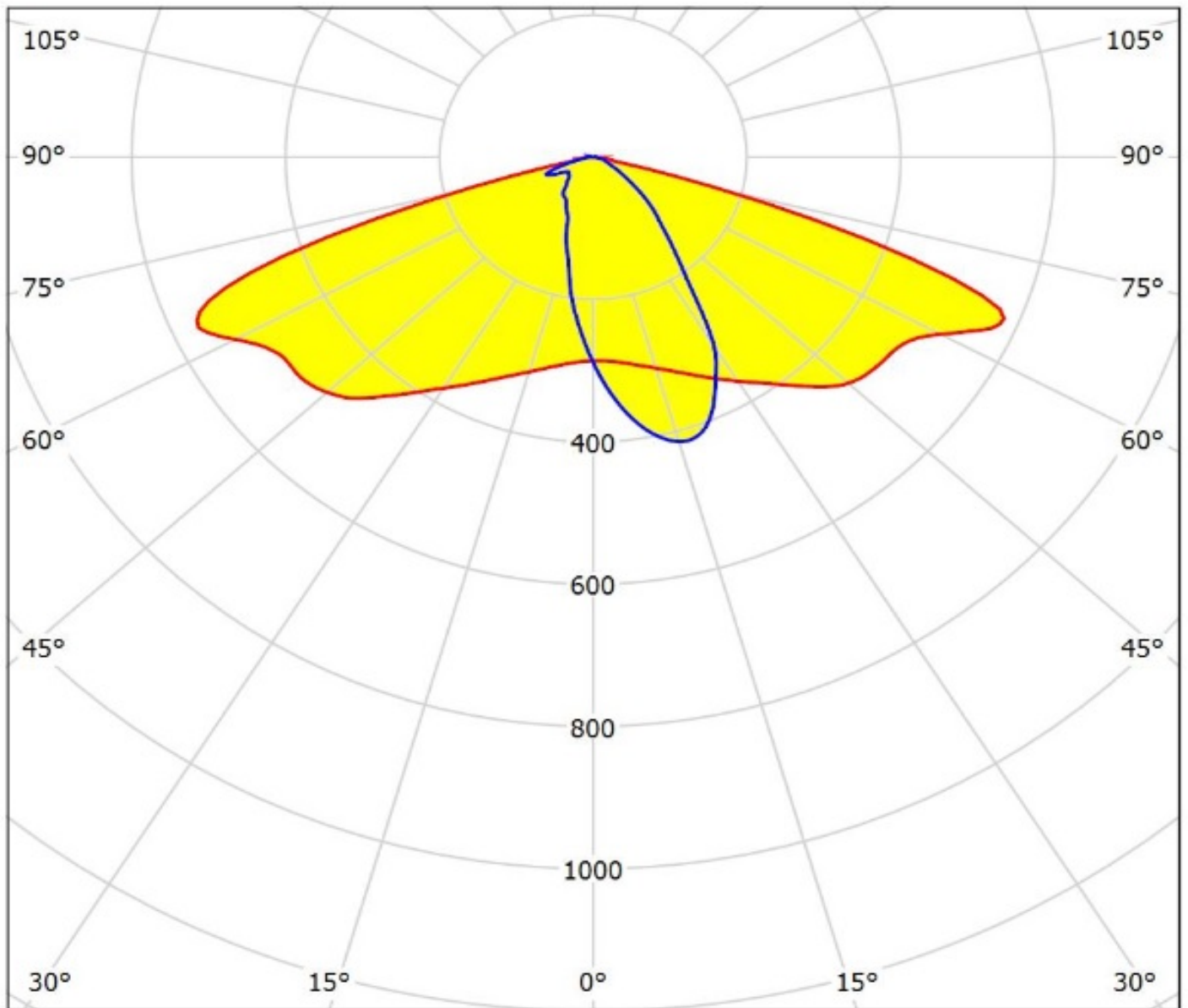
cd/klm

— C0 - C180 — C90 - C270

$\eta = 96\%$

Luminaire: LEDiL Oy CS16034_STRADELLA-IP-28-T2_(NF2x757G)

Lamps: 1 x Nichia_NF2x757G_(NF2L757GRT-V1)_1005.33lm@150mA_P=5.81972W_U=38.824V

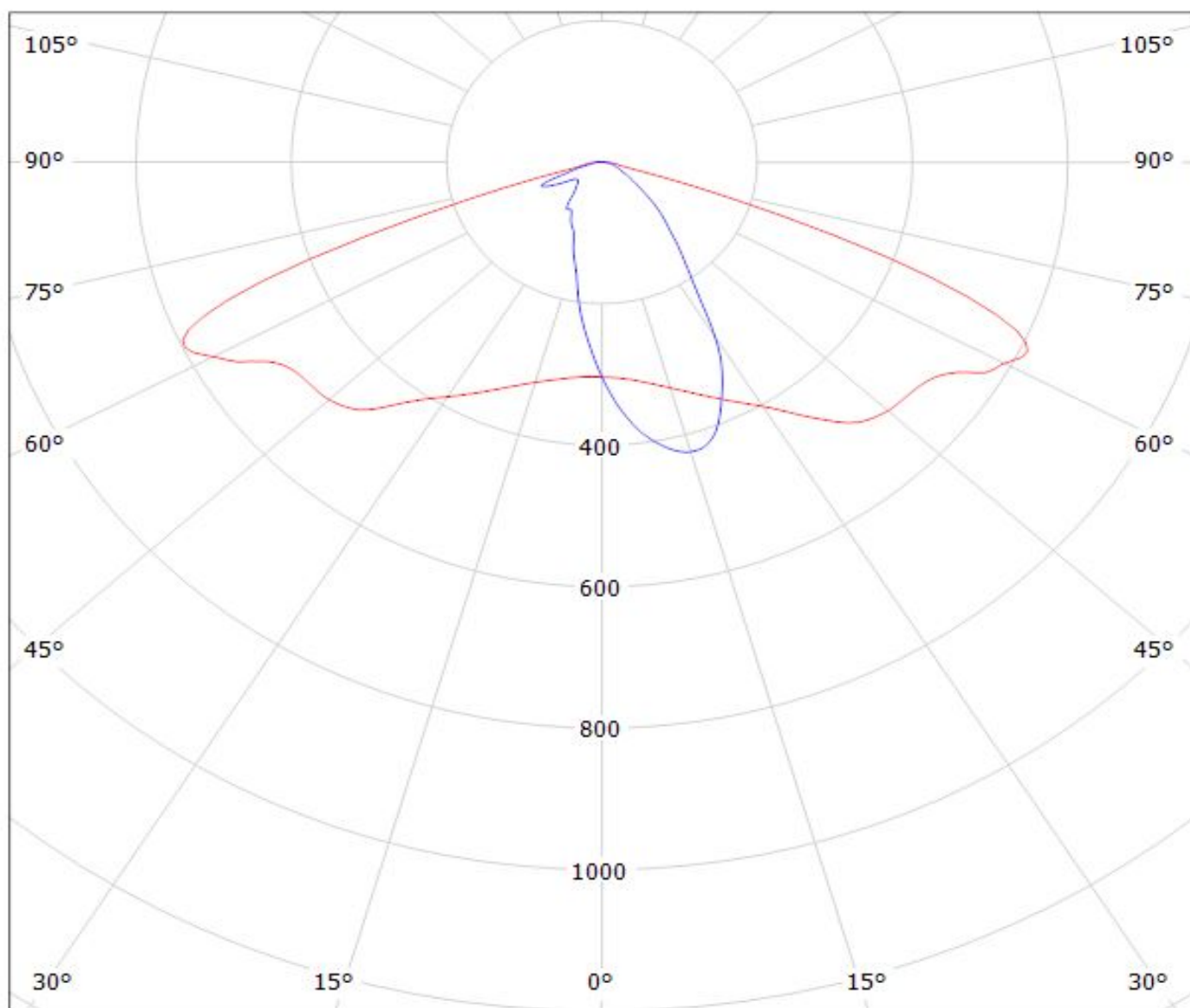


cd/klm
— C0 - C180 — C90 - C270

$\eta = 95\%$

Luminaire: Ledil CS16034_STRADELLA-IP-28-T2_(Duris_S5)

Lamps: 1 x Osram_Duris_S5_Stradella28_(GW_PSLR32.EM-JQJS-A333-1)
_786.457lm@250mA_P=4.90979W_I=0.250A



cd/klm

$\eta = 96\%$

— C0 - C180

— C90 - C270

NOTE: The typical divergence will be changed by different color, chip size and chip position tolerance. The typical total divergence is the full angle measured where the luminous intensity is half of the peak value.